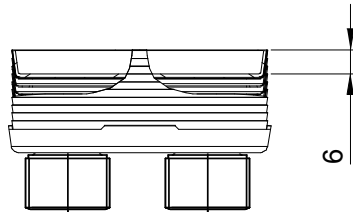
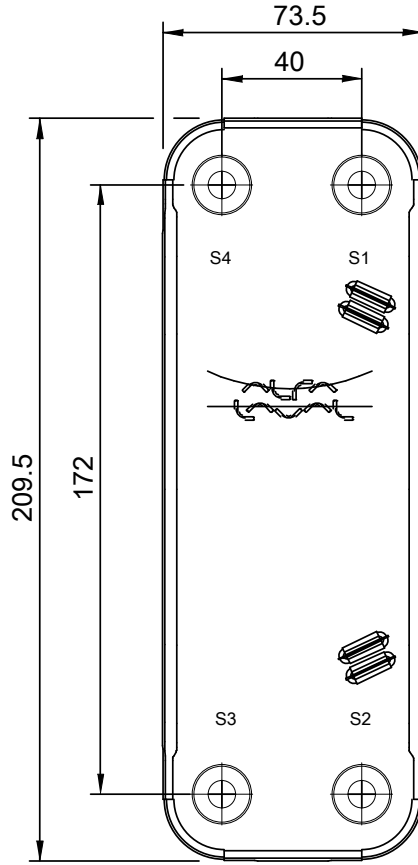
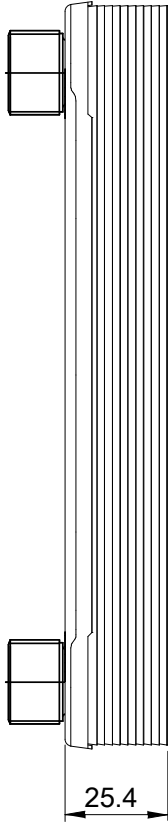
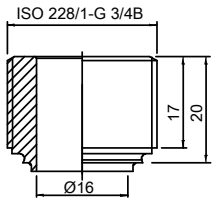


Note that all unique customer requirements (i.e tolerance) need to be verified thru Alfa Laval.

Z 31  
Alloy 316  
S1,S2,S3,S4



HEATING SURFACE  
NETWEIGHT 0.8 kg  
OPERATING WEIGHT kg  
PLATE MATERIAL ALLOY 316  
PLATE GROUPING 1\*4H/1\*4H

T1 T2 T3 T4 locations on back side correspond to S1 S2 S3 S4 on front side

ALL DIMENSIONS IN MILLIMETERS

SIDE	MEDIA	INLET	TEMP.	OUTLET	TEMP.	FLOW RATE	PRESSURE DROP	LIQUID VOL.
1		S1		S2				0.11 dm <sup>3</sup>
2		S3		S4				0.11 dm <sup>3</sup>

PRESSURE VESSEL APPROVAL

PED/UK

CBH16-9H (3287099030)

[www.alfalaval.com](http://www.alfalaval.com)

CUSTOMER NAME / REF. NO.

COMPANY / REF.

TOTAL LENGTH 45.4 mm  
TOTAL WIDTH 73.5 mm  
TOTAL HEIGHT 209.5 mm

1/15/2024  
REV 0