

# Alfa Laval AlfaVap 700

## Gasketed plate heat exchanger for evaporating applications

### Introduction

Alfa Laval AlfaVap is a tailor-made rising film plate evaporator that is based on Alfa Laval's semi-welded technology. The product evaporates in the gasketed channel while the steam heating medium condenses in the welded channel. AlfaVap can be used in evaporation systems and as a thermosiphon reboiler. A large range of plate and gasket types is available.

### Applications

- Biotech and Pharmaceutical
- Chemicals
- Energy and Utilities
- Food, Dairy and Beverages
- Water and Waste treatment

### Benefits

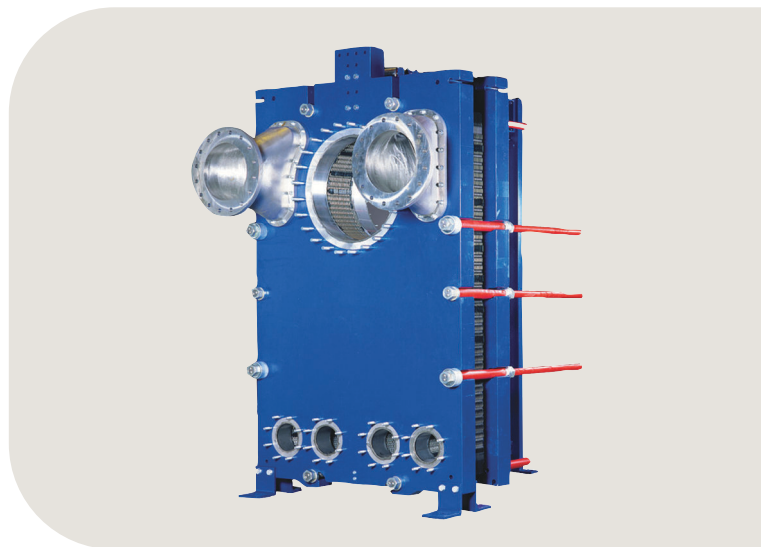
- Low hold-up volume – quick start-up and shut-down as well as fast process control
- High energy efficiency – low operating cost
- Easy to install – compact design
- High serviceability – easy to open for inspection and cleaning and easy to clean by CIP
- Access to Alfa Laval's global service network

### Features

Every detail is carefully designed to ensure optimal performance, maximum uptime and easy maintenance. Selection of available features, depending on configuration some features may not be applicable:



- Five-point alignment
- Reinforced hanger
- Clip-on gasket
- Leak chamber
- Bearing boxes
- Fixed bolt head
- Key hole bolt opening
- Lifting lug
- Lining
- Lock washer
- Pressure plate roller
- Tightening bolt cover



### Alfa Laval service offering

Our vision is to be your trusted partner for service, driving sustainable performance together. The Alfa Laval portfolio of service offers for Plate Heat Exchangers from start-up of your operations, through operation, process improvements, and replacement. Throughout the lifecycle, we bring you more than 140 years of technical experience and innovative service solutions tailored to your business needs. Easily accessible through our people all over the world.

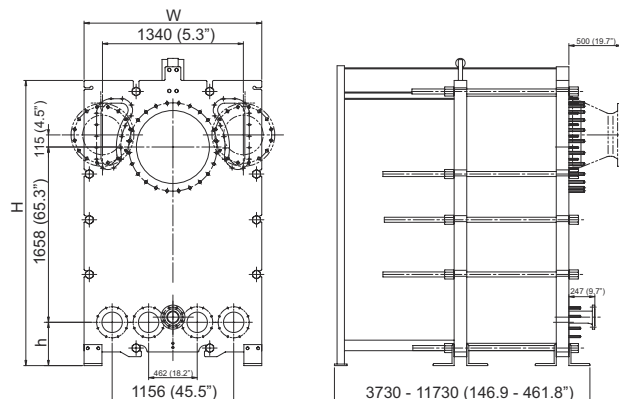
For information about our complete service offering and how to contact us - please visit [www.alfalaval.com/service](http://www.alfalaval.com/service).

## General remarks for technical information

- The global offering presented in this leaflet may not be available for all regions
- All combinations may not be configurable

## Dimensional drawing

Measurements mm (inches)



Frame type	H	W	h
FM ALS, PED, ASME	2792 (109.92")	1690 (66.5")	421 (16.6")
FL PED, ASME	2792 (109.92")	1690 (66.5")	421 (16.6")

## Technical data

Plates	Type	Free channel, mm (inches)
EC700-W	Semi-welded	6 / 6 (0.24 / 0.24)

## Materials

Heat transfer plates	316/316L Ti
Field gaskets	NBR, EPDM
Ring gaskets	NBR, EPDM, FKM
Flange connections	Metal lined: stainless steel, nickel, titanium
Frame and pressure plate	Carbon steel, epoxy painted

Other materials may be available on request.

## Operational data

Frame type	Max. design pressure barg (psig) <sup>1</sup>	Max. design temperature °C (°F)
FL, ASME	1.0 (14)	250 (482)
FL, PED	1.0 (14)	160 (320)
FM, ALS	6.0 (87)	180 (356)
FM, ASME	5.7 (83)	180 (356)

<sup>1</sup> Values for Product channel (Steam channel)

Extended pressure and temperature rating may be available on request.

## Connections

Ports	Connection standard
Product inlet	2 x EN1092-1 DN700 PN6
	2 x EN1092-1 DN200 PN10
	2 x ASME B16.5 Class 150 NPS 8
	2 x ASME B16.5 SeriesB Class 150 DN200
	2 x ASME B16.47 Class 150 DN700
	2 x ASME B16.5 Class 150 NPS8
Product outlet	2 x ASME B16.47 Class 150 NPS28
	2 x JIS B2220 10K 200A
	EN1092-1 DN700 PN10
Steam inlet	ASME B16.5 Class 150 NPS 28
	JIS B2220 10K 700A
	EN1092-1 DN400 PN10
Condensate outlets	ASME B16.5 Class 150 NPS 16
	JIS B2220 10K 700A
	2 x EN1092-1 DN700 PN6
	2 x EN1092-1 DN200 PN10
	2 x ASME B16.5 Class 150 NPS 8
	2 x ASME B16.5 SeriesB Class 150 DN200
	2 x ASME B16.47 Class 150 DN700
	2 x ASME B16.5 Class 150 NPS8
	2 x ASME B16.47 Class 150 NPS28
	2 x JIS B2220 10K 200A

This document and its contents are subject to copyrights and other intellectual property rights owned by Alfa Laval AB (publ) or any of its affiliates (jointly "Alfa Laval"). No part of this document may be copied, re-produced or transmitted in any form or by any means, or for any purpose, without Alfa Laval's prior express written permission. Information and services provided in this document are made as a benefit and service to the user, and no representations or warranties are made about the accuracy or suitability of this information and these services for any purpose. All rights are reserved.

## How to contact Alfa Laval

Up-to-date Alfa Laval contact details for all countries are always available on our website at [www.alfalaval.com](http://www.alfalaval.com)