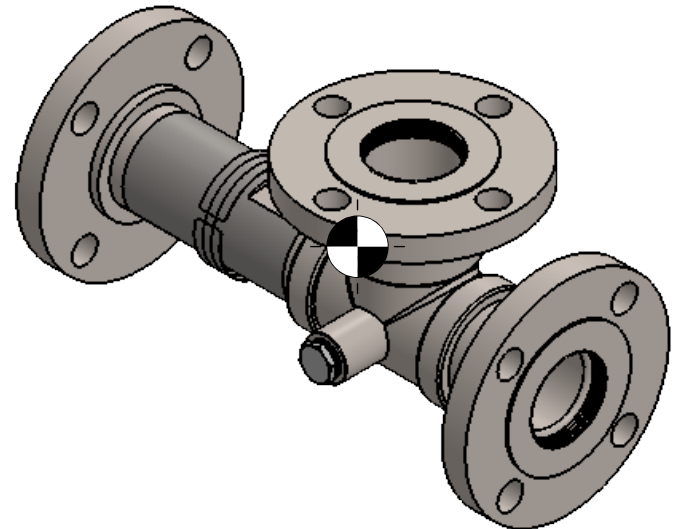
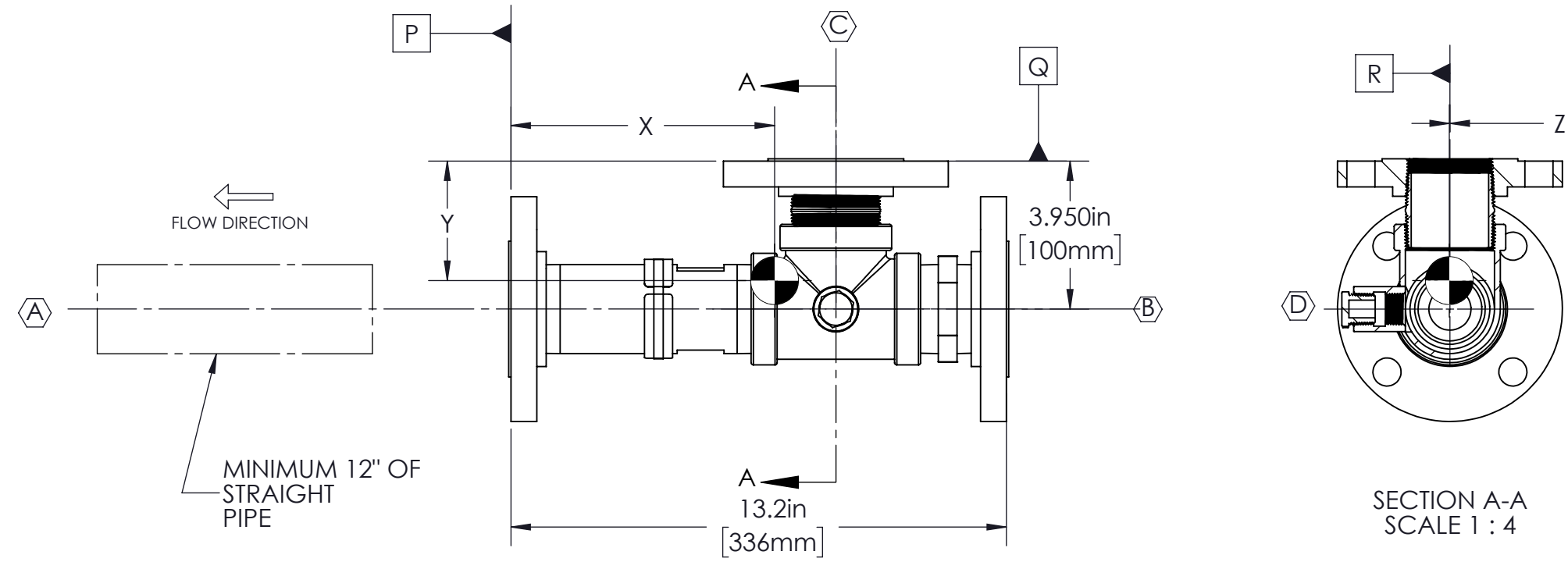


REVISION NOTES			
ECR NUMBER	RELEASE NOTES	DATE	APPROVAL
1139	UPDATED TEMPERATURE DETAILS	08/05/2019	KA



- NOTES:
- MINIMUM STRAIGHT PIPE LENGTH WITHOUT OBSTRUCTION ON DISCHARGE SIDE TO BE 6X PIPE DIAMETER
  - READ PRODUCT MANUALS BEFORE INSTALLATION AND OPERATION
  - PRODUCT DETAILS
    - SINGLE ADDITIVE SUCTION PORT
    - 0.75" (19.05mm) LOBESTAR MIXING NOZZLE® ORIFICE
    - 65-85 GPM MOTIVE FLOW RATE AT 100-195 FT DIFFERENTIAL HEAD (45-85 PSI DIFFERENTIAL PRESSURE WITH WATER)
    - STAINLESS STEEL SHEAR-MIXER BODY
    - STAINLESS STEEL INSERTS
    - ESTIMATED WEIGHT (DRY): 26lbs OR 12 kg

MK. NO.	QTY.	SIZE	RATING & STANDARD	TYPE	SERVICE
A	1	2"	150#, ASME B16.5	FLANGE/PIPE	BLENDED DISCHARGE
B	1	2"	150#, ASME B16.5	FLANGE/PIPE	FEED INLET
C	1	2"	150#, ASME B16.5	FLANGE/PIPE	SUCTION
D	1	1/2"	150#, MSS SP-114	FNPT	GAUGE PORT

C.G LOCATION FROM DATUM P,Q,R			
CONDITION	X	Y	Z
DRY	7.37 in (187 mm)	3.39 in (86 mm)	0.06 in ( 1.5 mm)
OPERATING	7.17 in (182 mm)	3.41 in (87 mm)	0.05 in (1 mm)

<b>Company Confidential</b>  Alfa Laval Inc. 10470 Deer Trail Drive Houston, TX 77038 USA www.alfalaval.com (713) 869-2593	Tolerances: Unless Otherwise Stated: Linear Tol.: .X - = +/- .125 (3.18 mm) .XX - = +/- .060 (1.52 mm) .XXX - = +/- .030 (0.76 mm) Angular Tol.: +/- 1° All Dimensions: in		Workflow: <b>Design Released to Production</b>		
	Description: <b>SHEAR-MIXER,SM2002_SGA</b>				
Finish: <b>125</b>	Drawing Scale: <b>1:2</b>	Drawn by: <i>XC</i>	Drawn Date: <i>02/15/2019</i>	Old Reference Number: <b>9984000949</b>	
Approx Weight: <b>26</b> Lbs.	Drawing Produced In Accordance With: <b>ASME Y14.5M-2009</b>	Engineering Approval: <i>XC</i>	Approved Date: <i>03/08/2019</i>	Part Number: <b>9984000949</b>	
Projection Method: <b>THIRD ANGLE</b>	Sheet Size: <b>B</b>	Material: <b>SEE DWG</b>	Sheet: <b>1 of 1</b>	Drawing Number: <b>9984000949_SGA</b>	Revision: <b>A</b>