

# Alfa Laval SCANDI BREW® Multiple unit

## Compact all-in-one protection and cleaning for brewing tanks

### Introduction

Alfa Laval SCANDI BREW® Multiple unit is a compact unit for safety protection and cleaning of smaller pressure vessels like e.g. small scale fermenting vessels and bright beer vessels.

### Benefits

- Cost-competitive design
- Perfect self-cleaning during CIP of vessel
- Compact and simple design
- Reliable function
- Easy to install and maintain

### Design

The standard design includes an anti vacuum valve, spring-loaded pressure relief valve, a CIP supply and cleaning device, and a self-cleaning CO2 valve. The standard design covers tanks up to 2,000 hl gross, cold cleaned.

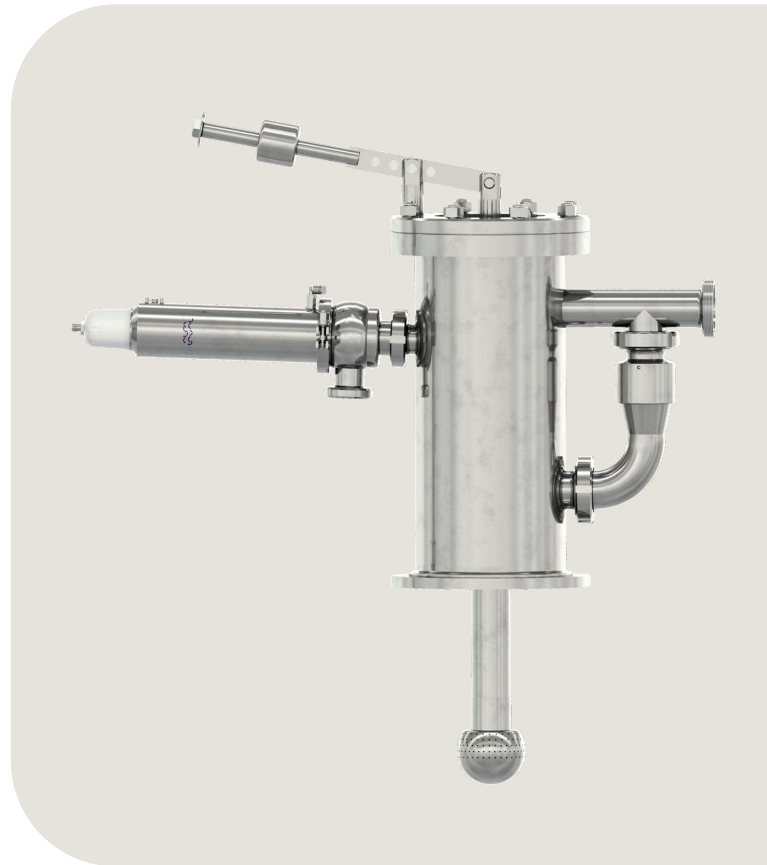
**Anti vacuum valve:** The anti vacuum valve protects tanks from vacuum created mainly during emptying and cleaning at ambient temperature. Standard size is 100 mm.

**Pressure relief valve:** The pressure relief valve protects the tank from over-pressure and if required from overfilling. Standard sizes are DN25, DN40, DN50 and DN65 mm.

**CIP supply and cleaning head:** The Multiple unit includes the CIP supply pipe and if required a cleaning device as well - as standard a spray ball. Any type of cleaning head like a fixed spray ball, a rotary spray ball or a rotary jet head can be mounted on the Multiple unit. Additional internal CIP nozzles ensure perfect self-cleaning of all internal parts of the Multiple unit.

**Self-cleaning CO2 valve:** A combined gas exhaust/supply valve is situated between the CIP pipe and the connection for gas supply/exhaust. The valve is normally open for gas flow out of the tank during filling and fermentation, and open for gas inlet during pressurising and emptying. During CIP, the liquid will close the valve but a special drilling of the valve body ensures cleaning of the seat and the adjacent pipe connection because a small amount flows through. The main CIP flow will run directly to the cleaning head.

The self-cleaning CO2 valve is located outside of the Multiple unit. This allows for a proper action of the cleaning head for the self-cleaning of the anti vacuum valve and all parts inside of the Multiple unit. Standard size is 2".



### Option

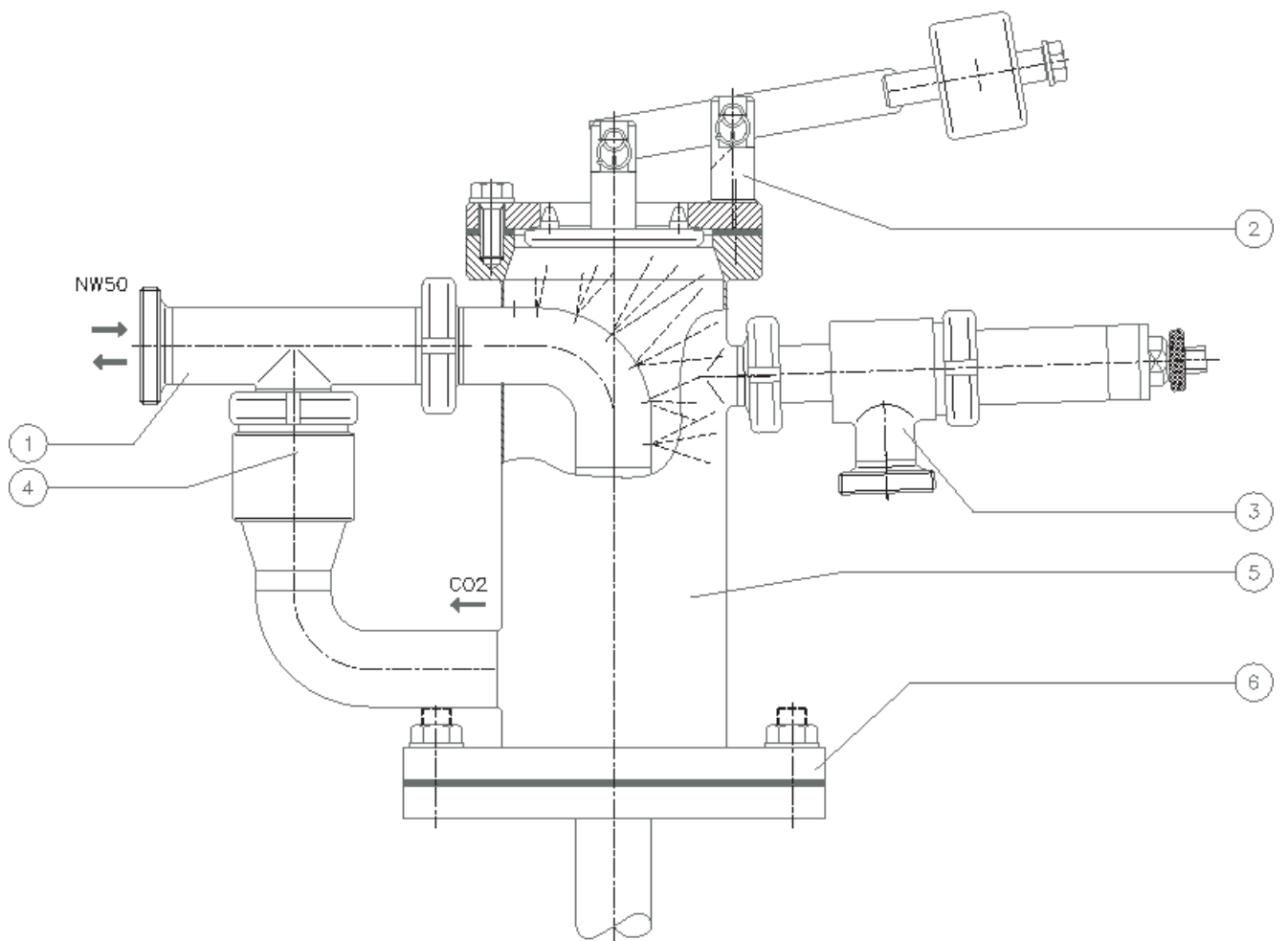
- Trace heating element

### Technical data

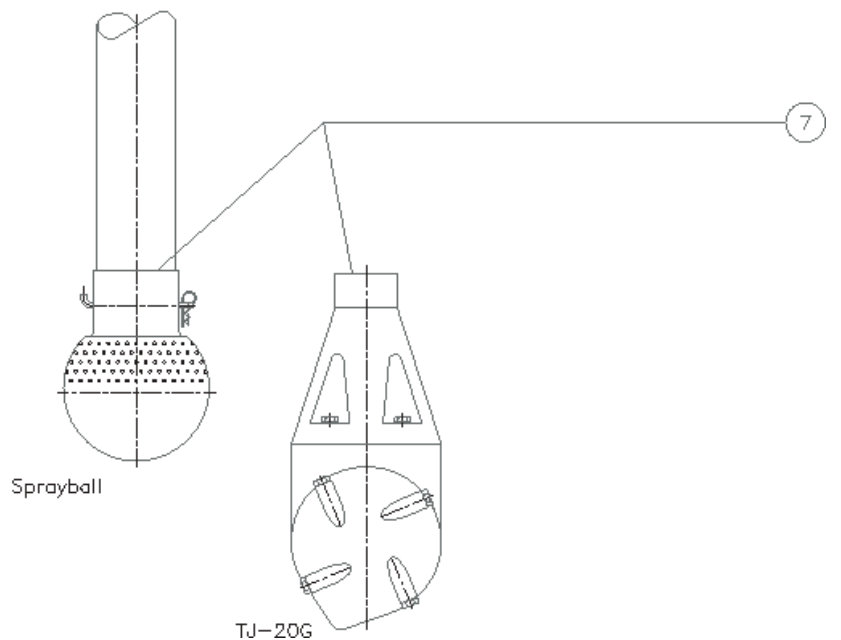
#### Materials

Product wetted parts in stainless steel	1.4303 (AISI 304)
Seals	EPDM (FDA approved)
Components	See separate product leaflets

PED approval on request.



- Pos.1 CIP inlet
- Pos.2 Anti-vacuum valve
- Pos.3 Pressure relief valve
- Pos.4 Self-cleaning CO2-valve
- Pos.5 Housing
- Pos.6 Tank flange connection
- Pos.7 Sprayball - rotating cleaning machine



This document and its contents is owned by Alfa Laval Corporate AB and protected by laws governing intellectual property and thereto related rights. It is the responsibility of the user of this document to comply with all applicable intellectual property laws. Without limiting any rights related to this document, no part of this document may be copied, reproduced or transmitted in any form or by any means (electronic, mechanical, photocopying, recording, or otherwise), or for any purpose, without the expressed permission or authorized by Alfa Laval Corporate AB. Alfa Laval Corporate AB will enforce its rights related to this document to the fullest extent of the law, including the seeking of criminal prosecution.

#### How to contact Alfa Laval

Up-to-date Alfa Laval contact details for all countries are always available on our website at [www.alfalaval.com](http://www.alfalaval.com)