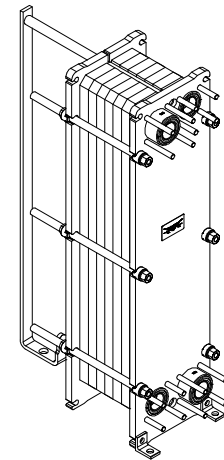
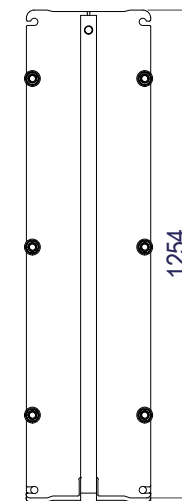


Space between pressure plate and supporting column should be kept free from fixed installations!

Technical drawing of a rectangular frame assembly. The drawing shows a side view of a frame with a central panel and four horizontal bars. The dimensions are as follows:

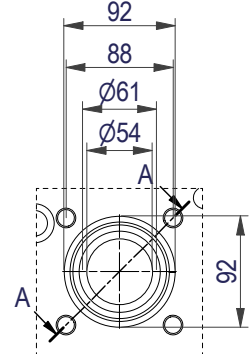
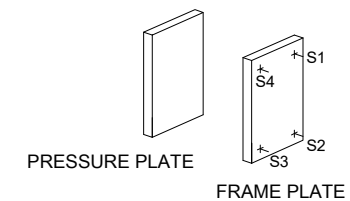
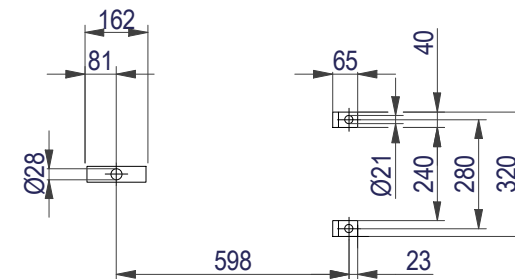
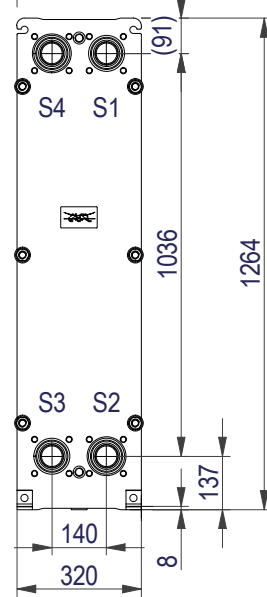
- Overall width: 600
- Distance from the left edge to the center of the first bar: 25
- Distance between the centers of the first and second bars: A
- Distance from the right edge to the center of the last bar: 25
- Overall height: 12

(MOVABLE)

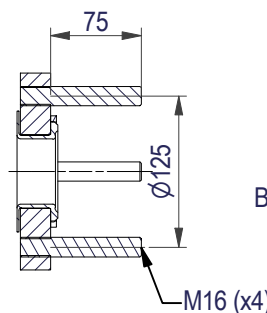


*) Recommended free space for opening and closing to be applied on both sides

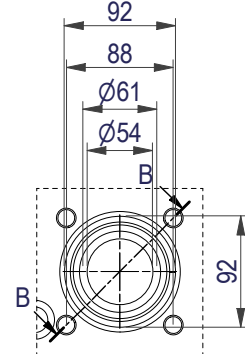
Free space can be reduced to this distance on one of the sides



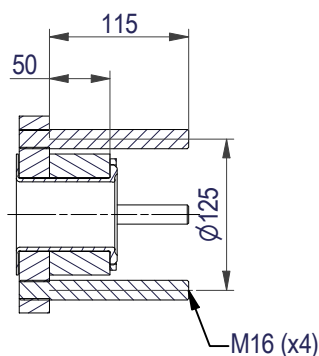
A-A:
NBRP / ALLOY 254



EN 1092-1 DN50 PN16
S2, S4



B-B:
NBRP / ALLOY 254



All dimensions in millimeters (mm)

NO. OF UNITS

1



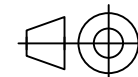
www.alfalaval.com

DRAWING

GASKETED PLATE HEAT EXCHANGER

TL6-BFM

PED Article 4.3



8240123131

Do not use this drawing for foundation bolting or piping layout

DATE 2/24/22
REVISION 0