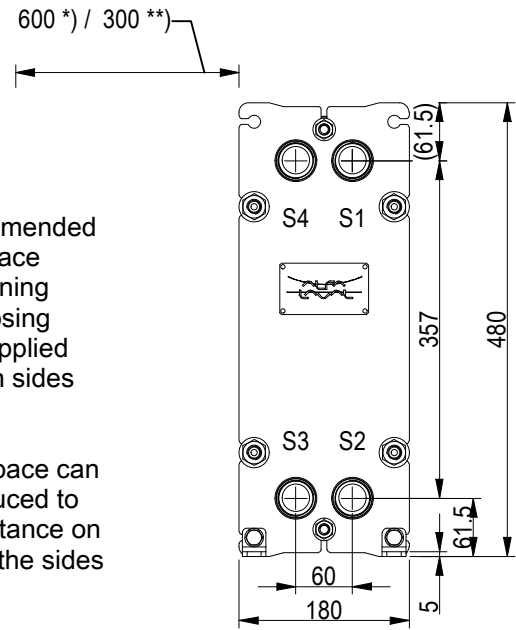


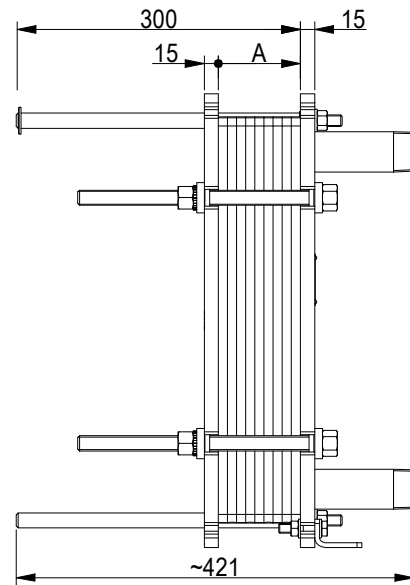
**FRAME PLATE**



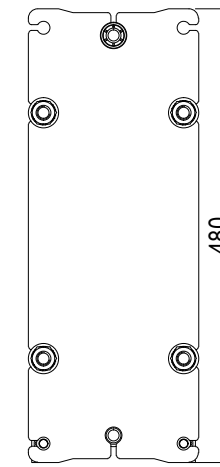
\*) Recommended free space for opening and closing to be applied on both sides

\*\*) Free space can be reduced to this distance on one of the sides

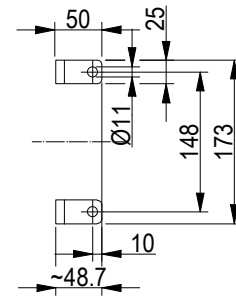
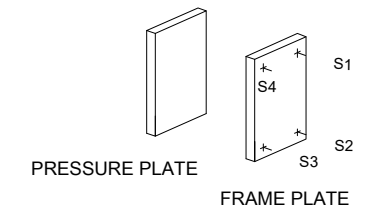
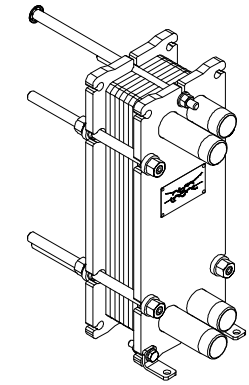
Space between pressure plate and supporting column should be kept free from fixed installations!



**PRESSURE PLATE (MOVABLE)**

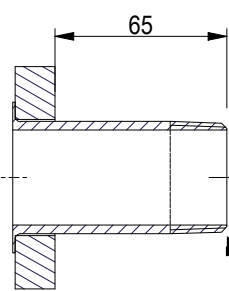
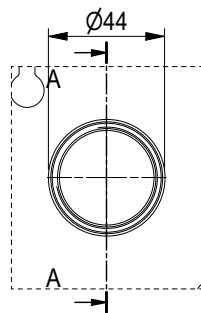


All dimensions in millimeters (mm)



ISO 7 - R 1 1/4, Stainless Steel, 80 mm  
S1, S2

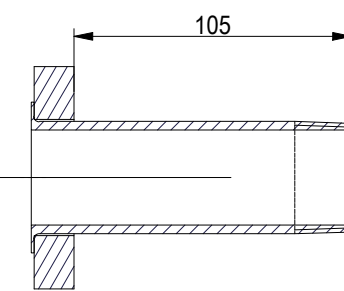
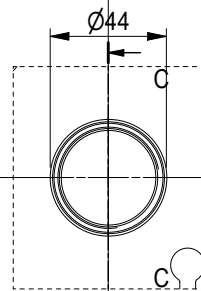
A-A:  
Flat face



ISO 7 - R 1 1/4  
NO. OF UNITS

ISO 7 - R 1 1/4, Stainless Steel, 120 mm  
S3, S4

C-C:  
Flat face



ISO 7 - R 1 1/4  
1

<b>APPROX. OUTER DIMENSIONS</b>	
LENGTH	430 mm
WIDTH	190 mm
HEIGHT	490 mm
<b>APPROX. WEIGHTS</b>	
NET WEIGHT, EMPTY	27.0 kg
WEIGHT FULL OF WATER	28.7 kg
PLATE MATERIAL	ALLOY 316
PLATE THICKNESS	0.5 mm
GASKET	NBRP Clip-on
<b>CHANNEL ARRANGEMENT</b> 1*7 H / 1*7 H	

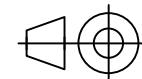


www.alfalaval.com

DRAWING  
GASKETED PLATE HEAT EXCHANGER

**M3-FG**

ALS



8061064703

Do not use this drawing for foundation bolting, piping layout or planning of lifting and handling of the equipment.

DATE 2/12/24  
REVISION 0