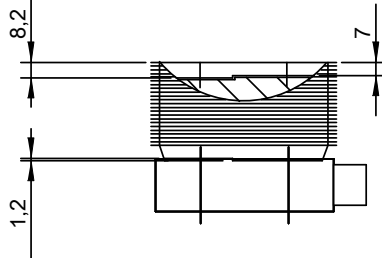
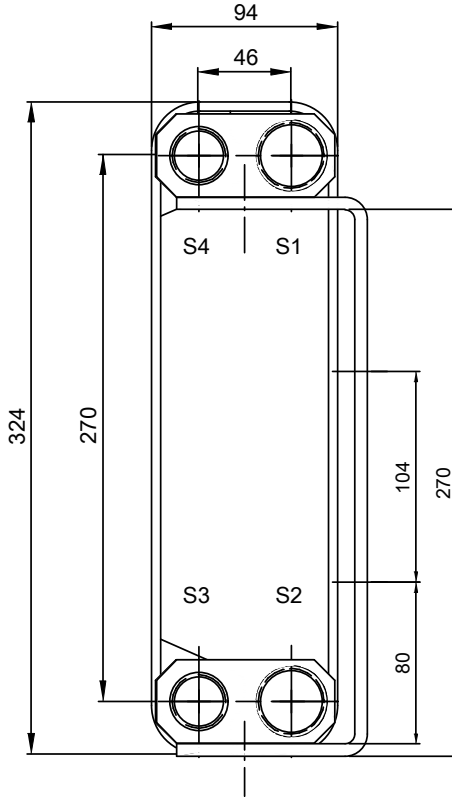
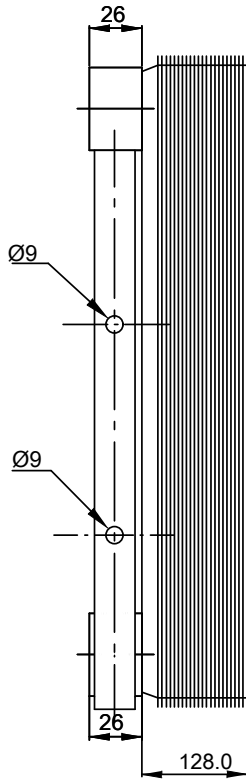
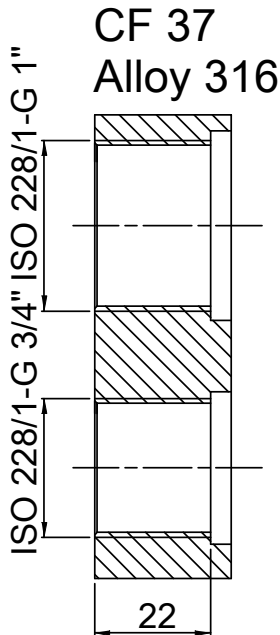


Note that all unique customer requirements (i.e tolerance) need to be verified thru Alfa Laval.



Frame plate is depressed 1.2 mm at connection S3/S4
Pressure plate is depressed 1.2 mm / even number of channel plates at connections T3/T4 / uneven number of channel plates at connections T1/T2.

HEATING SURFACE
NETWEIGHT 7.9 kg
OPERATING WEIGHT kg
PLATE MATERIAL ALLOY 316
PLATE GROUPING 1*39H/1*40H

T1 T2 T3 T4 locations on back side correspond to S1 S2 S3 S4 on front side

ALL DIMENSIONS IN MILLIMETERS

SIDE	MEDIA	INLET	TEMP.	OUTLET	TEMP.	FLOW RATE	PRESSURE DROP	LIQUID VOL.
1		S1		S2				1.12 dm ³
2		S3		S4				1.09 dm ³

PRESSURE VESSEL APPROVAL

PED/UK

DOC20-80H (3287118437)

www.alfalaval.com

CUSTOMER NAME / REF. NO.

TOTAL LENGTH 154.0 mm
TOTAL WIDTH 94.0 mm
TOTAL HEIGHT 324.0 mm

COMPANY / REF.

4/16/2024
REV 0