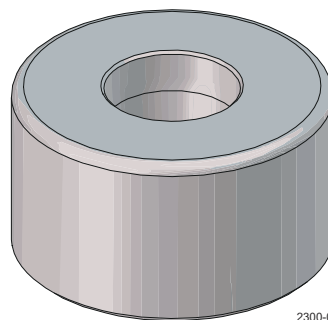
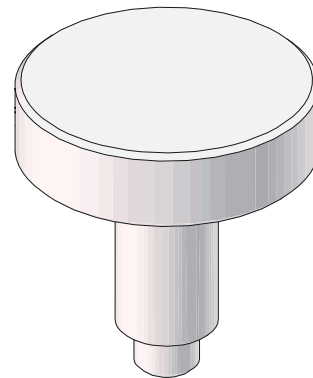


# Unique Mixproof mounting tool for lip seal

Double seat valves

---



2300-0043

Lit. Code

200008006-1-EN-GB

Instruction Manual

**Published by**  
Alfa Laval Kolding A/S  
Albuen 31  
DK-6000 Kolding, Denmark  
+45 79 32 22 00

**The original instructions are in English**

**© Alfa Laval AB 2025-11**

This document and its contents are subject to copyrights and other intellectual property rights owned by Alfa Laval AB (publ) or any of its affiliates (jointly "Alfa Laval"). No part of this document may be copied, re-produced or transmitted in any form or by any means, or for any purpose, without Alfa Laval's prior express written permission. Information and services provided in this document are made as a benefit and service to the user, and no representations or warranties are made about the accuracy or suitability of this information and these services for any purpose. All rights are reserved.

---

# Contents

1	Mounting tool for lip seal.....	5
1.1	Steps for mounting lip seal.....	5
2	Parts Lists and Exploded Views.....	7
2.1	Mounting tool.....	7

This page is intentionally left blank.

# 1 Mounting tool for lip seal

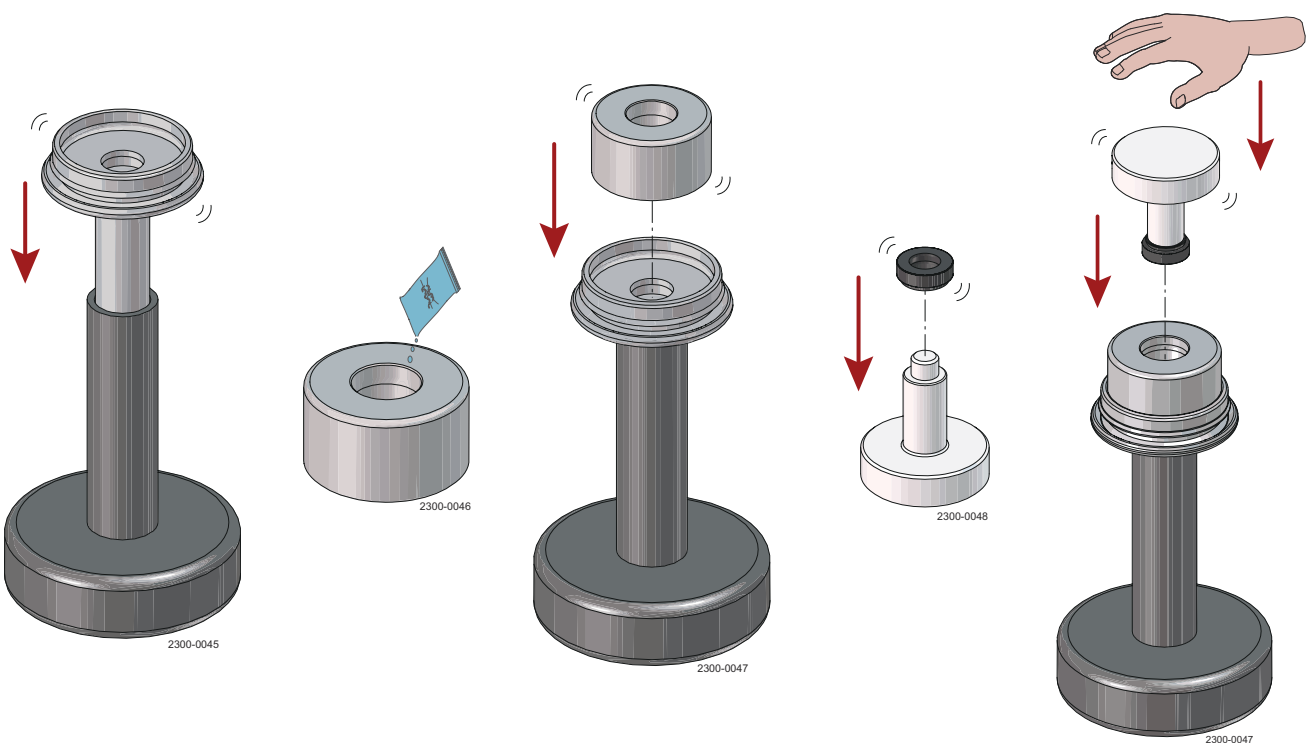
## ! NOTE

The Mounting Tool for lip seal is available for safe and fast replacement of lip seal in Unique Mixproof Valves.

### This tool applies to the following valves:

- Unique Mixproof Standard For Valve Sizes DN/OD38 & DN40 and DN/OD51 & DN50
- Unique Mixproof 3-Body Valve Size DN/OD51 & DN50
- Unique Mixproof 3A For Valve Sizes DN/OD38 & DN40 and DN/OD51 & DN50
- Unique Mixproof Valve CP-3 For Valve Sizes 1½" and 2"

## 1.1 Steps for mounting lip seal

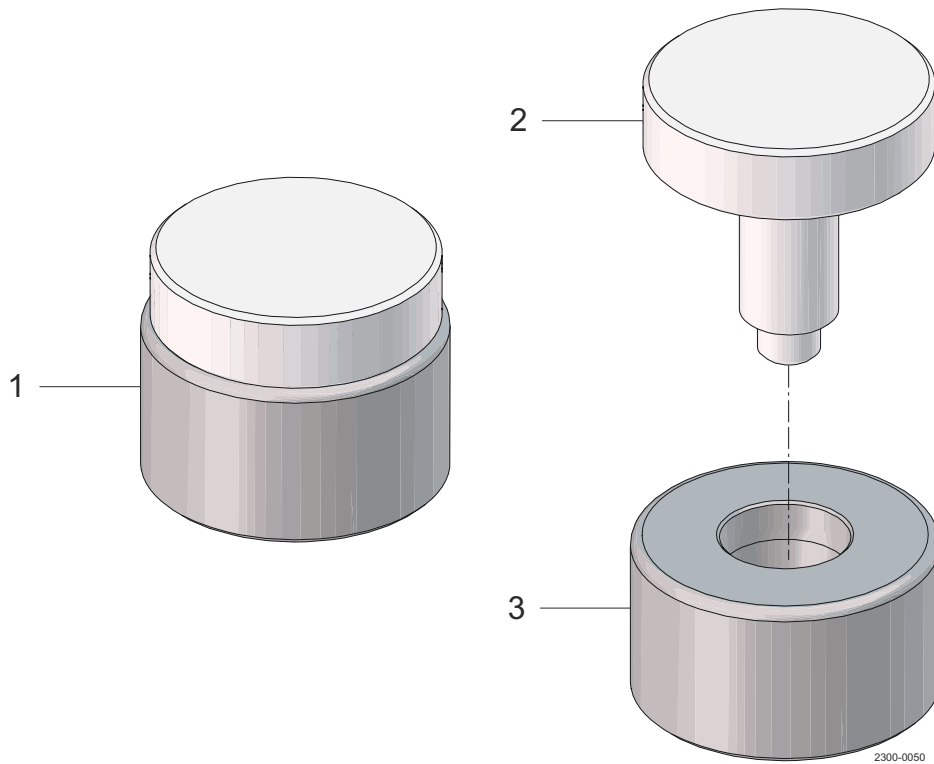


- 1 Put the upper plug in a support  
\* Make sure the white guide ring is in the plug
- 2 Lubricate the surface inside the base tool if necessary
- 3 Place the base tool, small hole facing down, on top of the plug.
- 4 Place the lip seal, narrow end down, on the press tool.
- 5 Push the press tool until the lip seal is in place in the upper plug.
- 6 Now lip seal is mounted

This page is intentionally left blank.

## 2 Parts Lists and Exploded Views

### 2.1 Mounting tool



Pos.	Qty.	Denomination
1	1	Mounting tool for lip seal cpl.
2	1	Mounting tool press
3	1	Mounting tool base