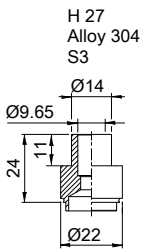
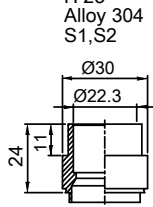


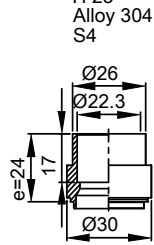
Note that all unique customer requirements (i.e tolerance) need to be verified thru Alfa Laval.



H 27  
Alloy 304  
S3

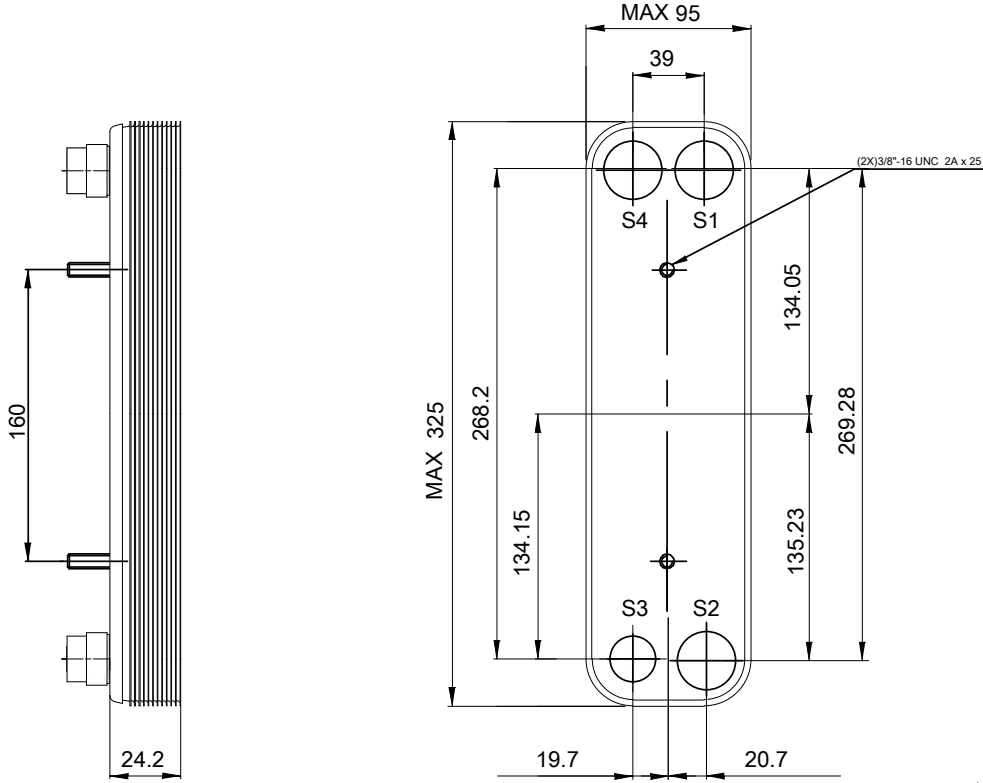


H 23  
Alloy 304  
S1,S2



H 23  
Alloy 304  
S4

HEATING SURFACE  
NETWEIGHT 2.0 kg  
OPERATING WEIGHT kg  
PLATE MATERIAL ALLOY 316  
PLATE GROUPING 1\*4H/1\*5H



Frameplate is depressed 1.2 mm at connection S4  
Pressureplate is depressed 1.2 mm / even number of channel plates at connections T4 / uneven number of channel plates at connections T1.  
T1 T2 T3 T4 locations on back side correspond to S1 S2 S3 S4 on front side

ALL DIMENSIONS IN MILLIMETERS

| SIDE | MEDIA | INLET | TEMP. | OUTLET | TEMP. | FLOW RATE | PRESSURE DROP | LIQUID VOL.          |
|------|-------|-------|-------|--------|-------|-----------|---------------|----------------------|
| 1    |       | S1    |       | S2     |       |           |               | 0.14 dm <sup>3</sup> |
| 2    |       | S3    |       | S4     |       |           |               | 0.11 dm <sup>3</sup> |



PRESSURE VESSEL APPROVAL

UL/CRN

ACH-30EQ-10H-F (3287084893)

[www.alfalaval.com](http://www.alfalaval.com)

CUSTOMER NAME / REF. NO.

COMPANY / REF.

TOTAL LENGTH 50.2 mm  
TOTAL WIDTH 94.0 mm  
TOTAL HEIGHT 323.0 mm

1/15/2024  
REV 0