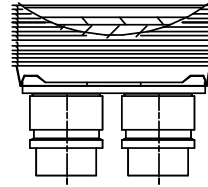
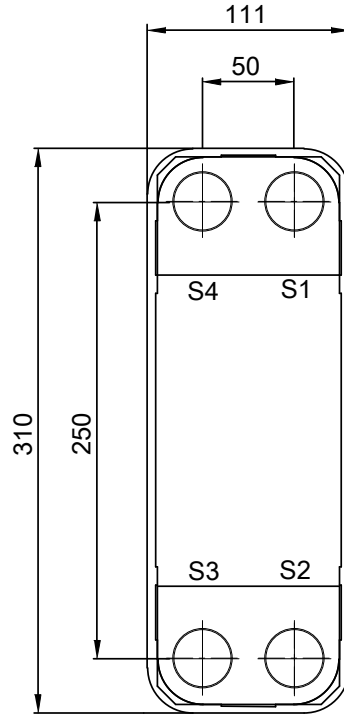
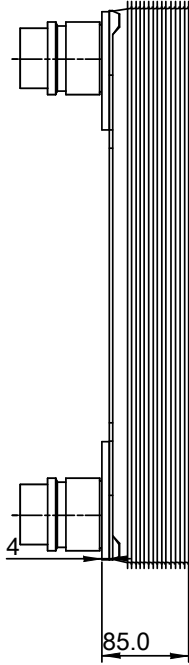
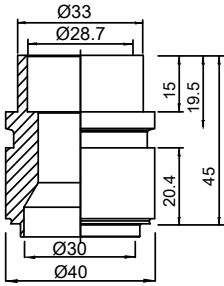


Note that all unique customer requirements (i.e tolerance) need to be verified thru Alfa Laval.

H2IXP
Alloy 304
S1,S2,S3,S4



HEATING SURFACE
NETWEIGHT 6.1 kg
OPERATING WEIGHT kg
PLATE MATERIAL ALLOY 316
PLATE GROUPING 1*14H/1*15H

T1 T2 T3 T4 locations on back side
correspond to S1 S2 S3 S4 on front side

ALL DIMENSIONS IN MILLIMETERS

| SIDE | MEDIA | INLET | TEMP. | OUTLET | TEMP. | FLOW RATE | PRESSURE DROP | LIQUID VOL. |
|------|-------|-------|-------|--------|-------|-----------|---------------|----------------------|
| 1 | | S1 | | S2 | | | | 0.75 dm ³ |
| 2 | | S3 | | S4 | | | | 0.70 dm ³ |

PRESSURE VESSEL APPROVAL

PED/UK

CBXP27-30H-F (3287151837)

www.alfalaval.com

CUSTOMER NAME / REF. NO.

COMPANY / REF.

TOTAL LENGTH 130.0 mm
TOTAL WIDTH 111.0 mm
TOTAL HEIGHT 310.0 mm

4/16/2024
REV 0