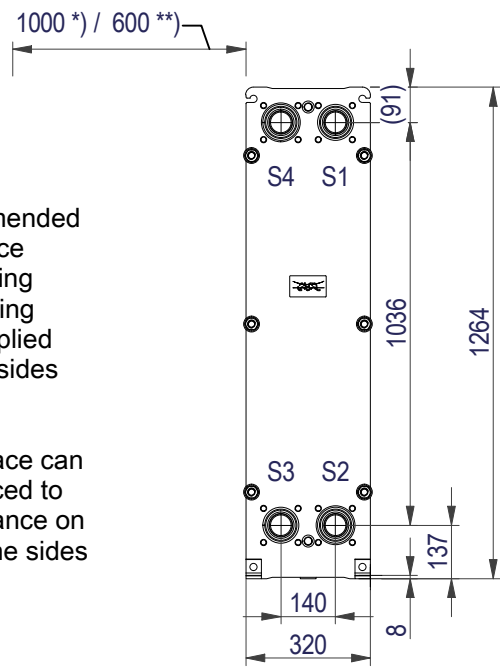


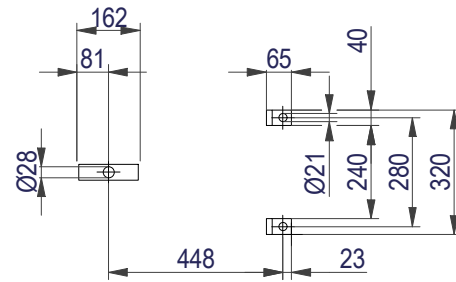
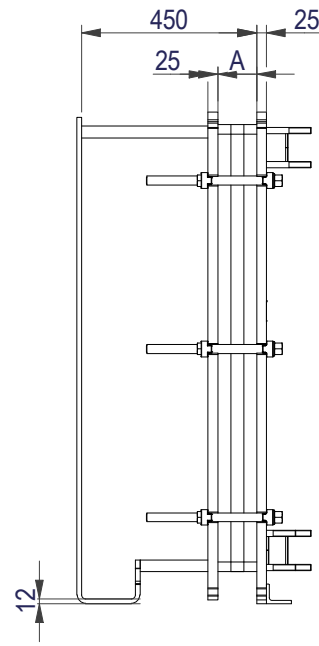
FRAME PLATE



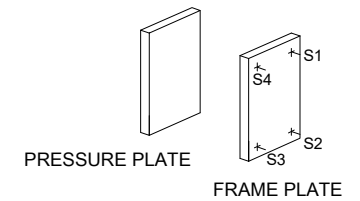
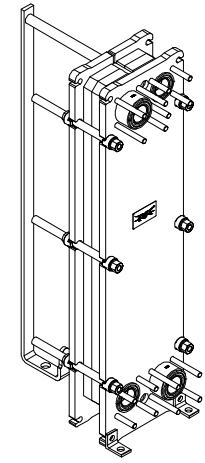
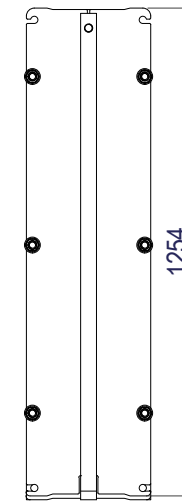
*) Recommended free space for opening and closing to be applied on both sides

**) Free space can be reduced to this distance on one of the sides

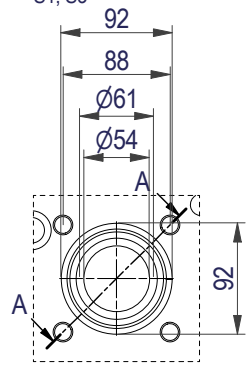
Space between pressure plate and supporting column should be kept free from fixed installations!



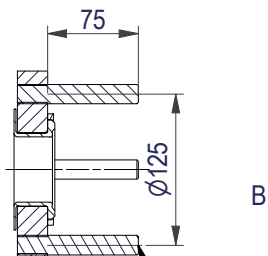
PRESSURE PLATE (MOVABLE)



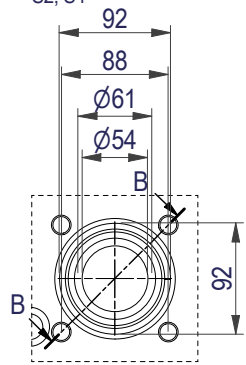
EN 1092-1 DN50 PN16
S1, S3



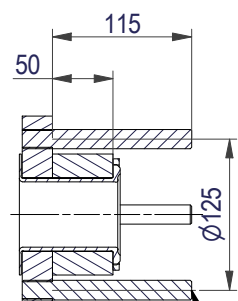
A-A:
NBRP / ALLOY 254



EN 1092-1 DN50 PN16
S2, S4



B-B:
NBRP / ALLOY 254



All dimensions in millimeters (mm)

NO. OF UNITS

1

APPROX. OUTER DIMENSIONS

| | |
|--------|---------|
| LENGTH | 630 mm |
| WIDTH | 330 mm |
| HEIGHT | 1270 mm |

APPROX. WEIGHTS

| | |
|----------------------|--------------|
| NET WEIGHT, EMPTY | 208 kg |
| WEIGHT FULL OF WATER | 223 kg |
| PLATE MATERIAL | ALLOY 316 |
| PLATE THICKNESS | 0.5 mm |
| GASKET | NBRP Clip-on |

CHANNEL ARRANGEMENT 1*17 ML
/ 1*17 MH

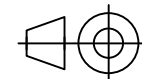


www.alfalaval.com

DRAWING
GASKETED PLATE HEAT EXCHANGER

TL6-BFM

PED Article 4.3



8240123090

Do not use this drawing for foundation bolting or piping layout

DATE 2/24/22
REVISION 0