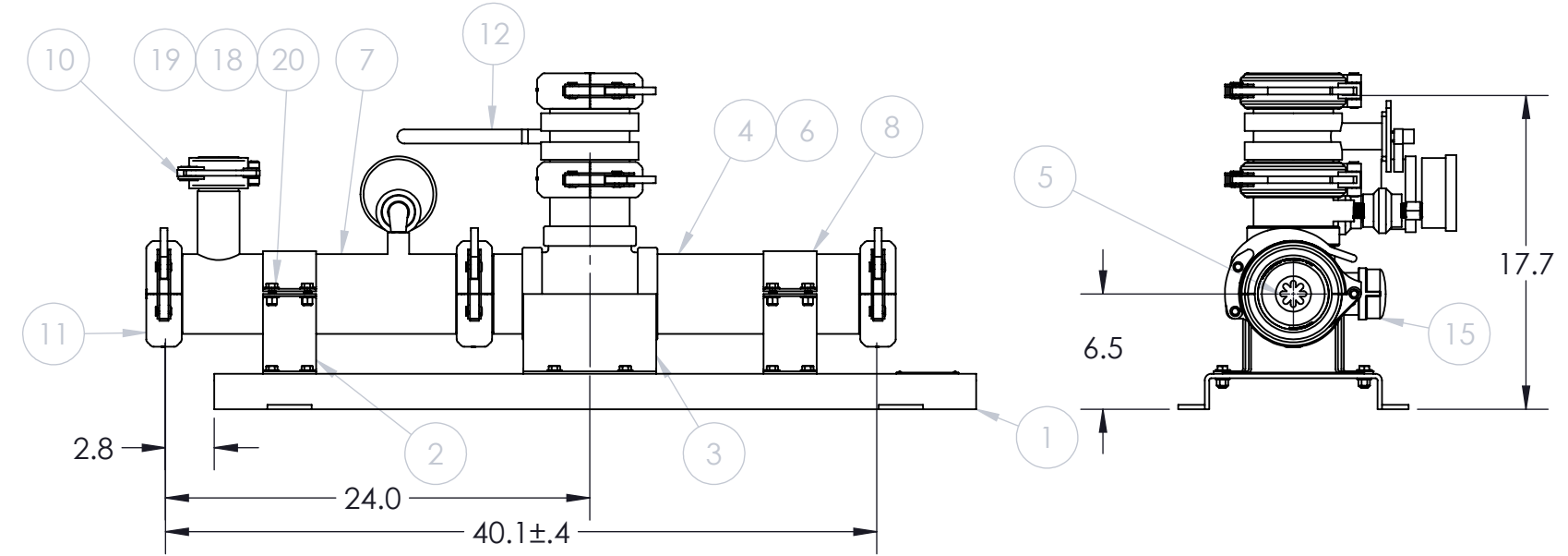
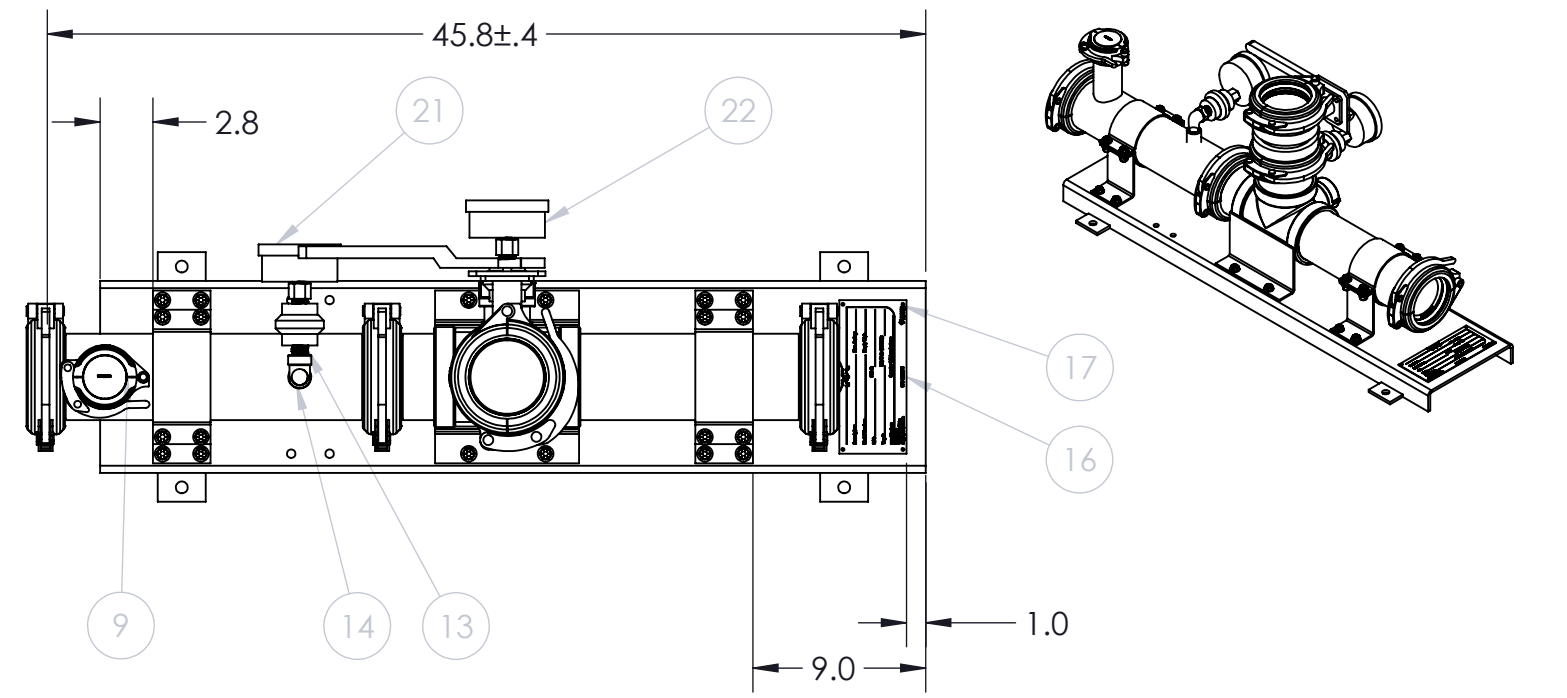


ITEM NO.	PART NUMBER	DESCRIPTION	QTY.	Material
1	9984000267	BASEPLATE,SHEAR-MIXER,43",304SS	1	304 SS
2	9984000268	BRACKET,SHEAR-MIXER,BOTTOM,4"	2	304 SS
3	9984000270	BRACKET,SHEAR-MIXER,CENTER,4"	1	304 SS
4	9984000263	BODY,SHEAR-MIXER,LEFT,4",304SS	1	304 SS
5	9984000262	NOZZLE,SHEAR-MIXER,4",PU,1-1/2"ORIFICE	1	URETHANE
6	9984000261	DIFFUSER,SHEAR-MIXER,4",PU,GRV	1	URETHANE
7	9984000266	TUBE,INLET,SHEAR-MIXER,4",304SS	1	304 SS
8	9984000269	BRACKET,SHEAR-MIXER,TOP,4"	2	304 SS
9	9984000290	CAP,GRV,2",304SS	1	304 SS
10	9984000119	COUPLING,GRV,SNAP,2",304SS	1	SEE BOM
11	9984000111	COUPLING,GRV,SNAP,4",304SS	5	SEE BOM
12	9984000110	VALVE,BUTTERFLY,LEVERLOCK,VIC300,4",DI	1	SEE SPEC
13	9984000021	NIPPLE,PIPE,SCH80,1/2"DIAx1-1/2",304SS	2	304 SS
14	9984000020	ELBOW,90DEG,1/2",304SS,STREET	1	304 SS
15	9984000133	CAP,PIPE,2",304SS,FNPT	1	304 SS
16	9984000278	TAG,PRODUCT,3-1/2"x8",304SS	1	18GA 304SS
17	9984000004	RIVET,BLIND,1/8"x3/8",304SS	4	304 SS
18	9984000029	WASHER,FLAT,3/8",304SS	40	304 SS
19	9984000030	LOCKNUT,HEX,3/8"-16,304SS	20	304 SS
20	9984000028	BOLT,HEXHEAD,3/8"-16x1",304SS	20	304 SS
21	9984000800	GAUGE,PRESSURE,0-100PSI	1	SEE SPEC
22	9984000801	GAUGE,COMBO,-30"Hg-15PSI	1	SEE SPEC
23	9984000743	MANUAL,SHEAR-MIXER	1	-

REVISION NOTES				
ECR NUMBER	ECO NUMBER	RELEASE NOTES	DATE	APPROVAL
ECRRD00179	ECORD00193	INITIAL RELEASE- PHOENIX PROJECT	3/31/2017	KA



- NOTES:
- LUBRICATE COUPLING SEALS WITH AN INDUSTRIAL TYPE LUBRICANT SUCH AS WD-40 WHEN ASSEMBLING.
 - APPLY ANTI-SEIZE TO THE THREADS OF BOLTS BEFORE INSTALLING.
 - PRODUCT TO BE TAGGED WITH 9984000278 WITH ALL NECESSARY DETAILS PUNCHED/STAMPED
 - ALL NPT PIPE THREAD CONNECTIONS SHALL BE INSTALLED WRENCH TIGHT USING PIPE SEALANT DURING INSTALLATION. TURNS PAST HAND TIGHT GUIDELINES;
 - 1/8"-2" TURN 2-3 TIMES, STOPPING IN THE DESIRED ORIENTATION
 - LARGER THAN 2" TURN 1-2 TIMES, STOPPING IN THE DESIRED ORIENTATION
 - PROTECT ALL MNPT THREADS FROM DAMAGE DURING SHIPPING
 - USE APPROPRIATE SEALING, PACKAGING AND STRAPPING TO PREVENT CORROSION AND DAMAGE TO ALL PARTS.
 - INCLUDE APPROPRIATE PRODUCT MANUAL WITHIN SHIPPING CONTAINER.
 - OLD DRAWING NUMBER: ME-4S-1.50UG-M21

TIGHTENING TORQUE	
DIA & PITCH	TORQUE FT.LB
3/8-16	21

Company Confidential Alfa Laval Inc. 10470 Deer Trail Drive Houston, TX 77038 USA www.alfalaval.com (713) 869-2593	Tolerances: Unless Otherwise Stated: Linear Tol.: .X - = +/- .250 .XX - = +/- .188 .XXX - = +/- .125 Angular Tol.: +/- 1° All Dimensions: in		Workflow: Design Released to Production	
	Description: SHEAR-MIXER,SM4101			
Finish: N/A	Drawing Scale: 1:10	Drawn by: <i>KA</i>	Drawn Date:	Old Reference Number: ME-4S-1.50UG-M21
Approx Weight: 178 Lbs.	Drawing Produced In Accordance With: ASME Y14.5M-2009	Engineering Approval: <i>KA</i>	Approved Date: 03/31/2017	Part Number: 9984000265
Projection Method: THIRD ANGLE	Sheet Size: B	Material: SEE BOM	Sheet: 1 of 1	Drawing Number: 9984000265
				Revision: 0