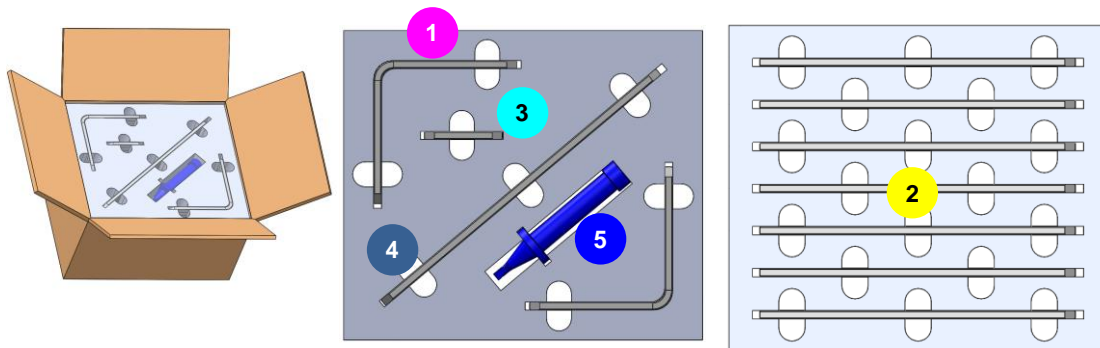




COMPABLOC +: POSITION GASKET INTO PANEL GROOVE

1- Check received gasket pieces.

You must have at least the following quantities (additional parts may be delivered in case of damage during gasket assembly)



Total quantities of parts available in this kit:

	Part n°1	Part n°3	Part n°4	Part n°5
Qty	18	9	9	1

Model & number of plates are indicated on the nameplate.

Part n° 2								
	Number of plates							
Model size	150	200	250	300	350	400	450	500
CP50	18	26	34	42				
CP75	26	34	42	50	58	66	74	82
CP120		42	50	58	66	74	82	90

! Parts 1 to 4 are graphite components: must be manipulated with cautiousness.

2- Remove the gasket from the groove

Use the tool (part N° 5) provided with the gasket to smoothly remove old gasket from the groove.

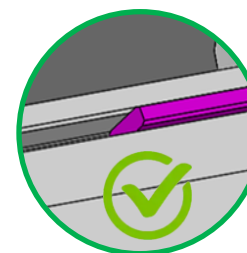
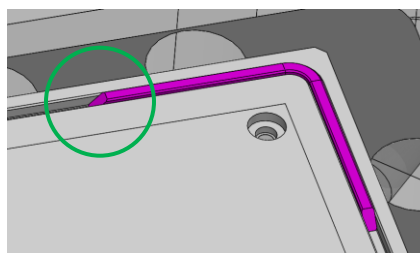
! Do not damage the groove nor the panel surface.

3- Clean the groove surface. Use a tissue or a smooth cloth brush.

! Do not damage the groove nor the panel surface.

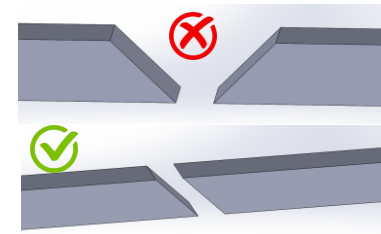
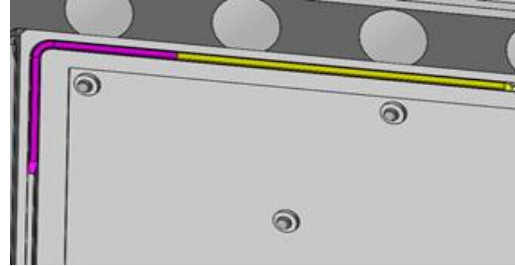
4- To secure adherence of gasket during panel reassembly, it is necessary to put one or two spots of grease on each piece of gasket (only on the side in contact with the groove in order to secure that there will be not contact between your operation fluids and the grease). Use an industrial grease strongly adhesive.

5- Position parts N°1

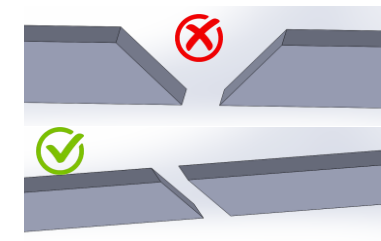
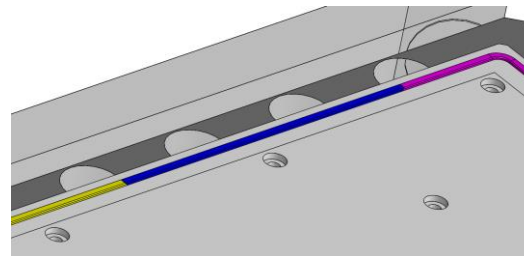


COMPABLOC +: POSITION GASKET INTO PANEL GROOVE

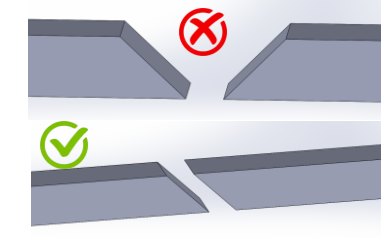
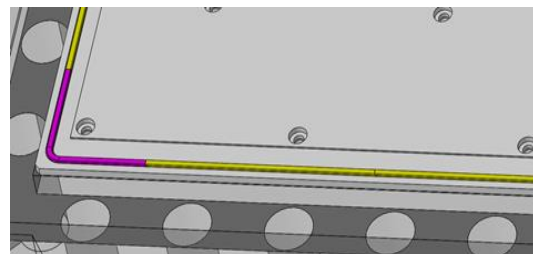
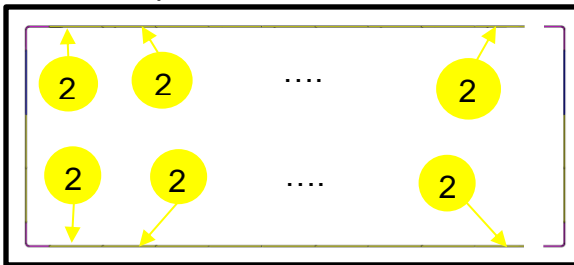
6- Position some of parts N°2



7- Position parts N°4



8- Position rest of parts N°2



9- Position parts N°3

