

Alfa Laval Siemens & Allen Bradley

Siemens & Allen Bradley

Application

This versatile Alfa Laval decanter automation solution is for users who prefer specific brands of hardware and software. These solutions provide the same ease of use and quality as other Alfa Laval decanter automation systems, but are instead based on Siemens & Allen Bradley system.

Benefits

- Easy-to-use system interface
- Maximum uptime as a result of effective decanter control
- Convenient for managing stocks of spare parts across multiple items of equipment fitted with Siemens & Allen Bradley hardware

Design

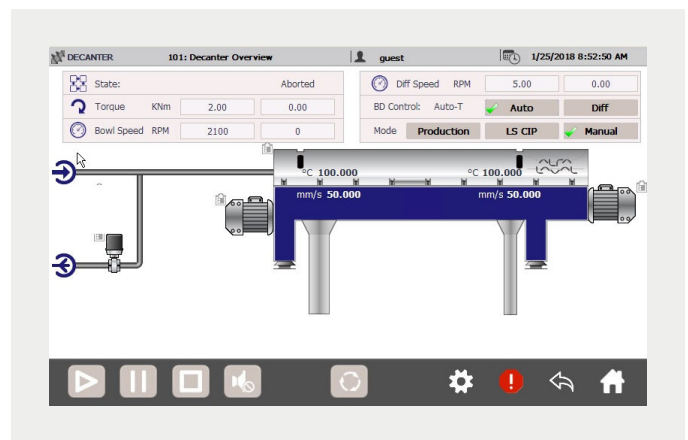
An Alfa Laval automation system is an integral part of these high-performing decanter centrifuge units. It provides users with easy, intuitive control of all decanter operating parameters, via the operator touchscreen.

To ensure the best possible control of decanter separation operations, the system features advanced algorithms that have been developed, tested and continuously improved by Alfa Laval over 20 years of operating experience.

Alfa Laval decanter automation systems for Siemens & Allen Bradley hardware and software are designed to integrate seamlessly with the control system of any plant. The systems share the same hardware and ease-of-use that characterizes all other Alfa Laval control systems.

Working principles

These solutions consist of a controller unit and a touchscreen interface, along with a selected range of other electrical components. The controller required for interlocking connects and controls the decanter centrifuge via sensors and variable frequency drives on the unit itself, and monitors and controls its operation in a safe, informative and effective manner.



To support seamless integration into a wide range of plant automation architectures, the Siemens & Allen Bradley solution supports multiple communication protocols.

Product Table

	Alfa Laval Decanter Automation, Siemens	Alfa Laval Decanter Automation, Allen Bradley
Hardware		
Interface	15"	10" (Default) and 15"
Controller type	Siemens Simatic ET200SP based distribution controller	Compact Logix
Touchscreen (HMI)		
Enclosure	No	No
ATEX Zone 2 / NEMA Class 1, Div 2	No	No
External communication		
Bus communication with external system	Profibus DP, Profinet Modbus TCP/IP	Ethernet IP
Hardwired communication with external system	Yes, limited signals	No
Cleaning-In-Place (CIP) functionality	No	No
Variable Frequency Drive (VFD)		
VFD type	ABB ACS 880	ABB ACS 880 and AB Powerflex 755
Support for other VFD type	Yes, via hardwired VFD. Torque has to be measured by load cell, not suitable for PT Gearbox	No
Mounting options		
Mounting of I/O module	VFD cabinet	VFD cabinet
Controller mounting	Motor control cabinet or remote mounting	Motor control cabinet or remote mounting
Auxiliary equipment I/O		
Feed, additive and dilution water control	No	Feed control
Feed pump interlock	No	Yes
Additive pump interlock	No	Yes
Diverter gate or inclined conveyor control	Yes	Yes
Cake conveyor interlock	No	Yes
Sensors and measurement		
Temperature sensors	Yes	Yes
Vibration monitoring	-	Yes
Vibration measurement	Yes	Yes
Speed measurement sensor	Yes	Yes
Torque measurement load cell	Available for Direct Drive gearboxes	Available for Direct Drive gearboxes
VFD torque measurement	Yes	Yes
Other functionality		
Cover switch	Optional	Optional
Power loss ride through	No	No
Automatic greasing system	Optional	Optional
Process control		
Backpressure (Paring Disc)	No	No
Automatic additive control	No	No

This document and its contents are subject to copyrights and other intellectual property rights owned by Alfa Laval AB (publ) or any of its affiliates (jointly "Alfa Laval"). No part of this document may be copied, re-produced or transmitted in any form or by any means, or for any purpose, without Alfa Laval's prior express written permission. Information and services provided in this document are made as a benefit and service to the user, and no representations or warranties are made about the accuracy or suitability of this information and these services for any purpose. All rights are reserved.

200000890-4-EN-GB

© Alfa Laval AB

How to contact Alfa Laval

Up-to-date Alfa Laval contact details for all countries are always available on our website at www.alfalaval.com