

# Alfa Laval SB Micro Sampling Port

## Sampling valves

---

### Introduction

The Alfa Laval SB Micro Sampling Port enables representative hygienic and microbiological samples to be taken under sterile conditions in small volumes from tanks and pipework. To help ensure product safety, the sampling port features a straightforward hygienic design with minimal components to make collecting samples mid-stream easy, convenient and accurate.

### Application

The SB Micro Sampling Port is specially designed for use within the brewery, food, dairy, beverage and many other industries.

### Benefits

- Safe, simple, aseptic sampling
- Small sample size
- Minimum impact to product
- Superior hygiene
- Versatile mounting
- Easy to clean

### Standard design

The sampling port consists of a housing made as a socket for direct welding into the tank wall or pipework, a rubber plug which is positioned by a press screw, o-ring, chain and closing cap. There are three types: Type P, Type PC, and Type T (see page 2).

### Working principle

Before sampling, sterilize the plug with alcohol, for instance. The inner part of the rubber plug will automatically be cleaned during either tank or pipe cleaning.

To take a sample, simply unscrew the closing cap and insert a one-millimetre hypodermic needle through the rubber plug.

Replacement of the rubber plug should only take place when the tank is empty, and pressure has been released. To replace the plug, loosen the press screw until it is released from the holder and the rubber plug is released. Mount the new plug, then remount the press screw tightly.



## TECHNICAL DATA

### Temperature

Temperature range, silicone:	1 °C - 110 °C
Temperature range, natural rubber:	1 °C - 90 °C

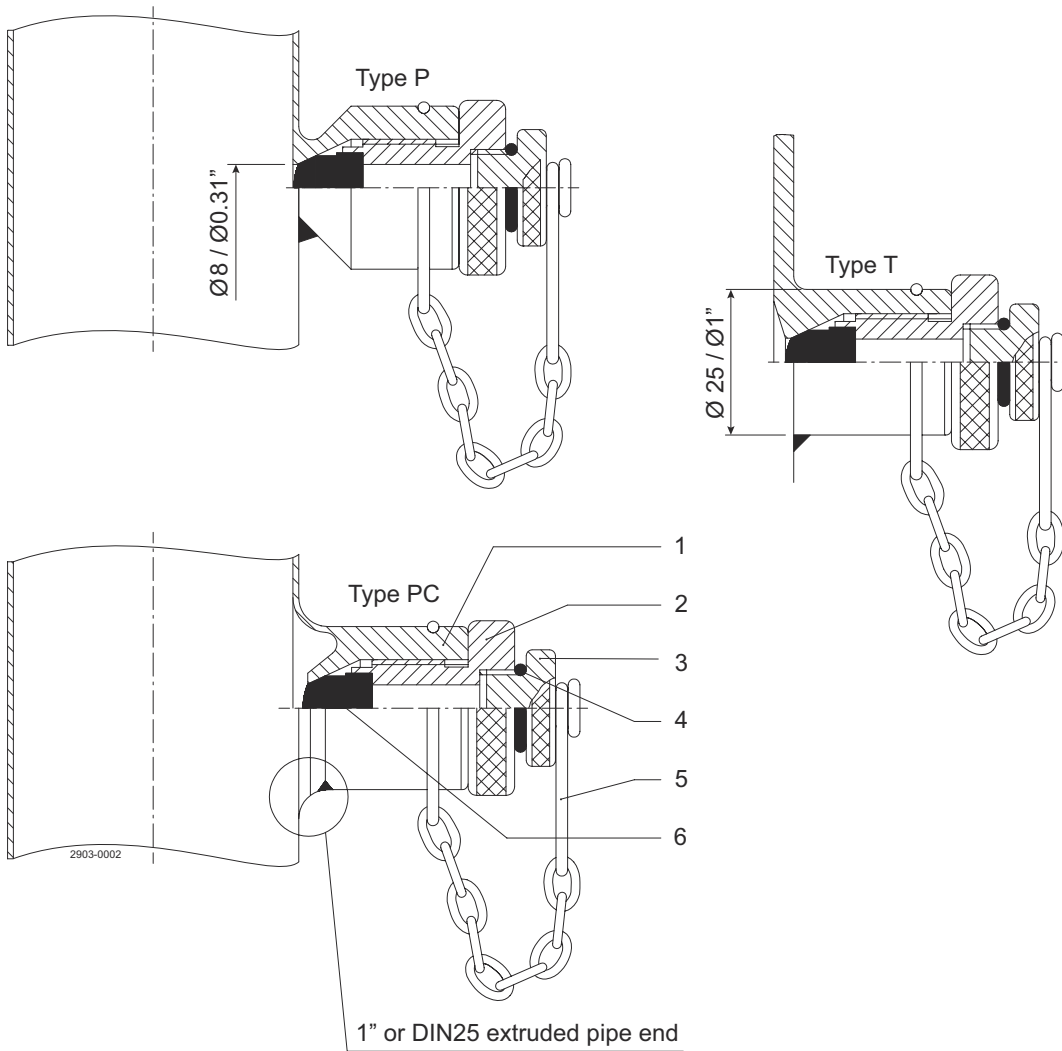
### Pressure

Max. product pressure:	6 bar
------------------------	-------

## PHYSICAL DATA

### Materials

Product wetted steel parts:	EN 1.4404 (AISI 316L) 3.1 available
Membrane seals:	Silicone or natural rubber



- Pos. 1: Welding socket  
Pos. 2: Press screw  
Pos. 3: Closing cap  
Pos. 4: O-ring  
Pos. 5: Chain  
Pos. 6: Rubber plug

The different types of sockets are mounted as follows:

- Socket, Type T, is welded into a 25 mm diameter hole in a tankwall
- Socket, Type P, is welded on a pipewall and thereafter a 8 mm hole is drilled
- Socket, Type PC, is available for welding onto extruded pipe ends equal to 1" as well as DN25

Dimensions (mm)

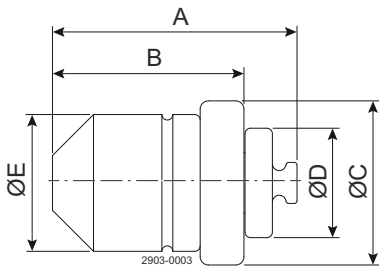


Figure 1. Type P

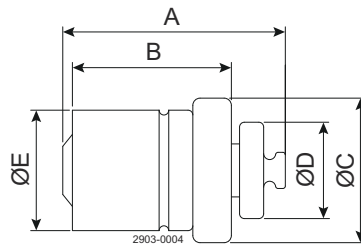


Figure 2. Type PC

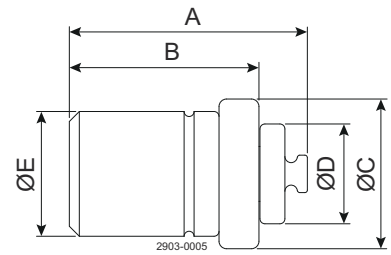


Figure 3. Type T

	A	B	ØC	ØD	ØE
Type P	44.7	35	30	20	25
Type PC	46.2	33	30	20	25
Type T	47.7	38	30	20	25

This document and its contents are subject to copyrights and other intellectual property rights owned by Alfa Laval Corporate AB. No part of this document may be copied, re-produced or transmitted in any form or by any means, or for any purpose, without Alfa Laval Corporate AB's prior express written permission. Information and services provided in this document are made as a benefit and service to the user, and no representations or warranties are made about the accuracy or suitability of this information and these services for any purpose. All rights are reserved.

**How to contact Alfa Laval**

Up-to-date Alfa Laval contact details for all countries are always available on our website at [www.alfalaval.com](http://www.alfalaval.com)