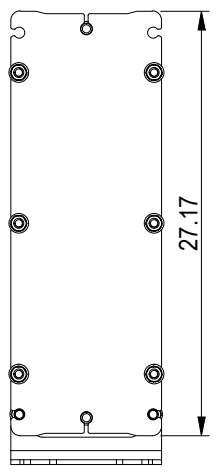
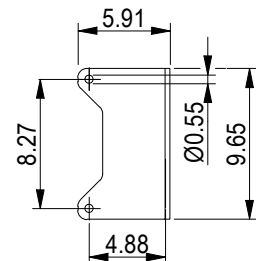
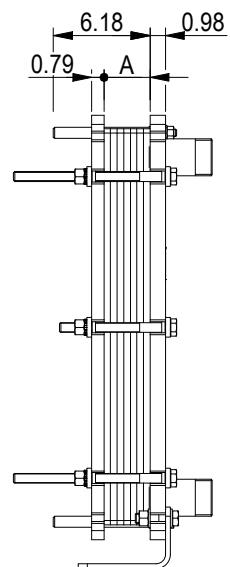


This document and its contents are subject to copyrights and other intellectual property rights owned by Alfa Laval (pub) or any of its affiliates (Alfa Laval). No part of this document may be copied, reproduced or transmitted in any form or by any means, or for any purpose, without Alfa Laval's prior express written permission. Information and services provided in this document are made as a benefit and service to the user, and no representations or warranties are made about the accuracy or suitability of this information and these services for any purpose. All rights are reserved.

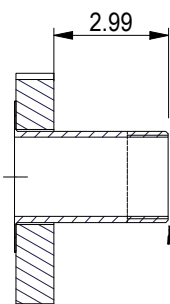
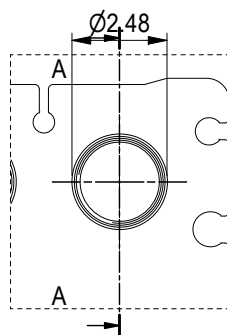
PRESSURE PLATE
(MOVABLE)



Space between pressure plate and supporting column should be kept free from fixed installations!



ASME B1.20.1 - 2-11.5 NPT, ALLOY 316L, 101 mm
S1, S2, S3, S4 A-A:

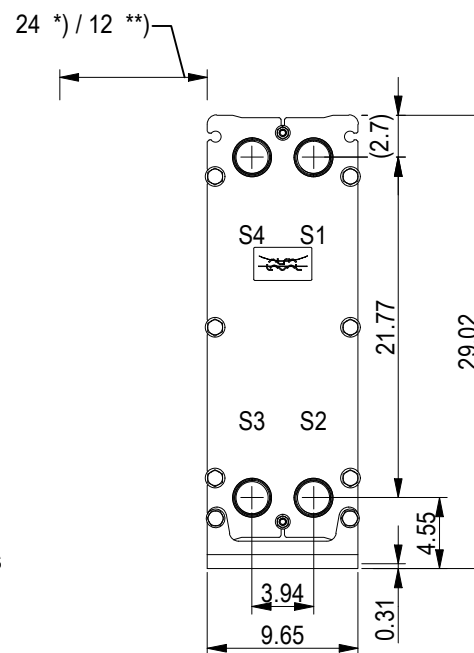


ASME B1.20.1 - 2-11.5 NPT
NO. OF UNITS

1

17.2 GPM
20.3 GPM

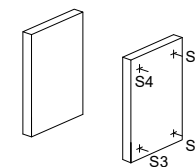
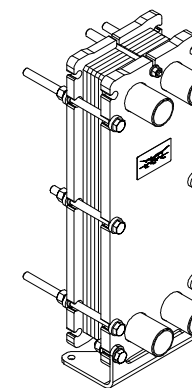
FRAME PLATE



*) Recommended free space for opening and closing to be applied on both sides

** Free space can be reduced to this distance on one of the sides

All dimensions in inches



PRESSURE PLATE
FRAME PLATE

TIGHTENING BOLTS 4 x M16, L = 7.1 in
2 x M16, L = 7.1 in

APPROX. OUTER DIMENSIONS
LENGTH 9.4 in
WIDTH 10.2 in
HEIGHT 27.6 in
APPROX. WEIGHTS
NET WEIGHT, EMPTY 170 lb
WEIGHT FULL OF WATER 182 lb
PLATE MATERIAL ALLOY 316
PLATE THICKNESS 0.5 mm
GASKET NBRP Clip-on
AREA OF HEAT SURFACE 16.3 ft²

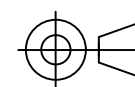


www.alfalaval.com

DRAWING
GASKETED PLATE HEAT EXCHANGER
T5-MFG

ASME
Code Section VIII Div.1

MAWP 150 psi at 266.0 °F
MDMT -18.0 °F at 150 psi
Designed, constructed and stamped in accordance with 2021 ASME.



8240171444
T5-MFG, 20 plates,

Do not use this drawing for foundation bolting or piping layout
or planning of lifting and handling of the equipment.

DATE 6/12/23
REVISION 0