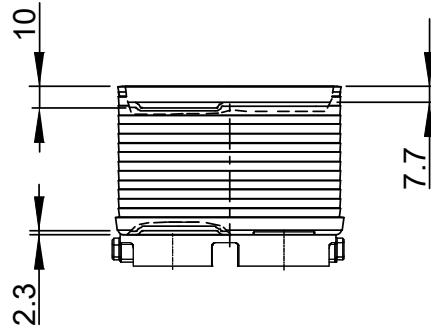
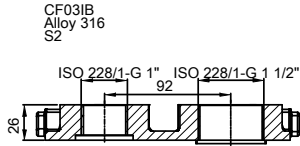
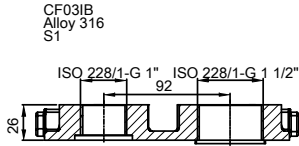
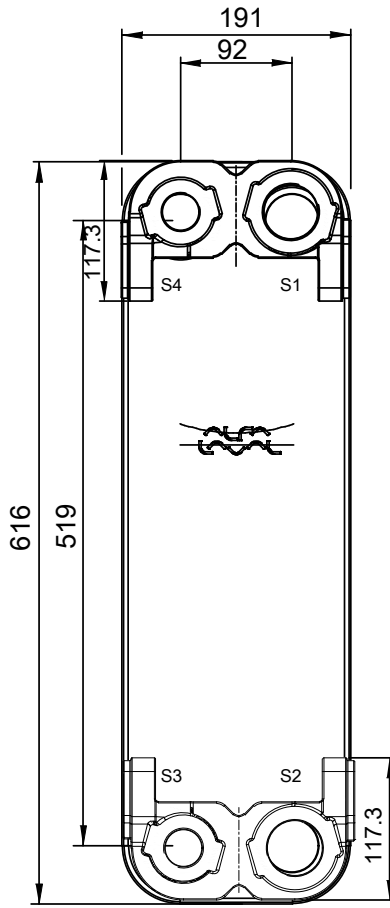
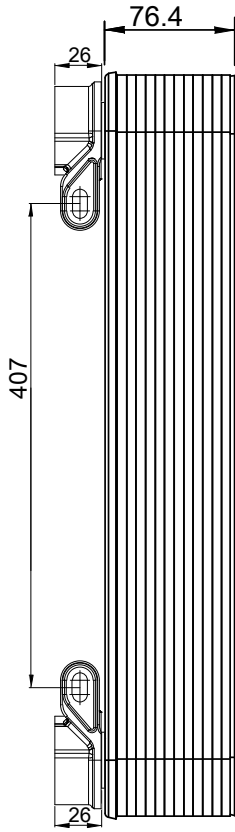


Note that all unique customer requirements (i.e tolerance) need to be verified thru Alfa Laval.



HEATING SURFACE  
 NETWEIGHT 17.4 kg  
 OPERATING WEIGHT kg  
 PLATE MATERIAL ALLOY 316  
 PLATE GROUPING 1\*11H/1\*12H

ALL DIMENSIONS IN MILLIMETERS

| SIDE | MEDIA | INLET | TEMP. | OUTLET | TEMP. | FLOW RATE | PRESSURE DROP | LIQUID VOL.          |
|------|-------|-------|-------|--------|-------|-----------|---------------|----------------------|
| 1    |       | S1    |       | S2     |       |           |               | 2.52 dm <sup>3</sup> |
| 2    |       | S3    |       | S4     |       |           |               | 2.31 dm <sup>3</sup> |

PRESSURE VESSEL APPROVAL PED  
 DOC110-24H-F (3075026693)



www.alfalaval.com

CUSTOMER NAME / REF. NO.

COMPANY / REF.

TOTAL LENGTH 102.4 mm  
 TOTAL WIDTH 191.0 mm  
 TOTAL HEIGHT 616.0 mm



4/16/2024  
 REV 0