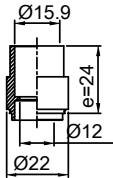
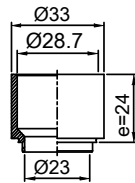


Note that all unique customer requirements (i.e tolerance) need to be verified thru Alfa Laval.

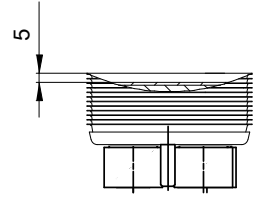
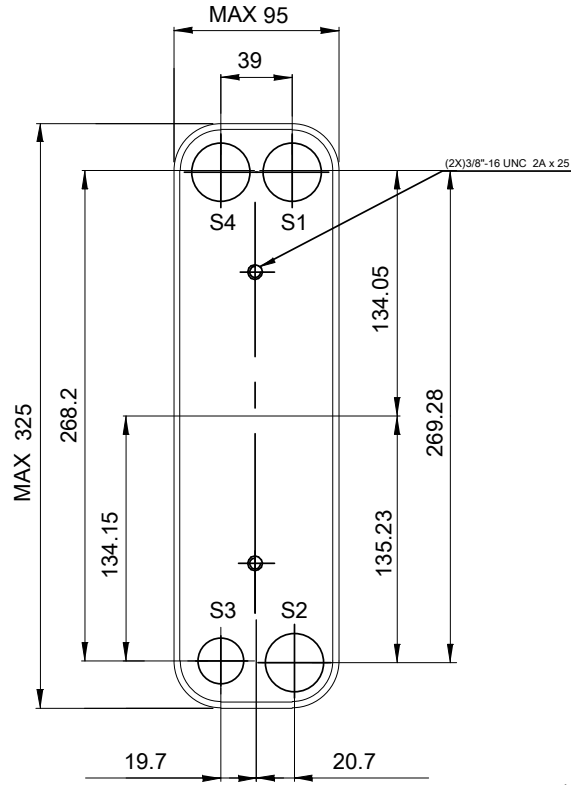
H 68
Alloy 304
S3



H 41
Alloy 304
S1,S2,S4



HEATING SURFACE
NETWEIGHT 6.3 kg
OPERATING WEIGHT kg
PLATE MATERIAL ALLOY 316
PLATE GROUPING 1*29H/1*30H



Frameplate is depressed 1.2 mm at connection S4
Pressureplate is depressed 1.2 mm / even number of channel plates at connections T4 / uneven number of channel plates at connections T1.
T1 T2 T3 T4 locations on back side correspond to S1 S2 S3 S4 on front side

ALL DIMENSIONS IN MILLIMETERS

| SIDE | MEDIA | INLET | TEMP. | OUTLET | TEMP. | FLOW RATE | PRESSURE DROP | LIQUID VOL. |
|------|-------|-------|-------|--------|-------|-----------|---------------|----------------------|
| 1 | | S1 | | S2 | | | | 0.84 dm ³ |
| 2 | | S3 | | S4 | | | | 0.81 dm ³ |



PRESSURE VESSEL APPROVAL UL/CRN
ACH-30EQ-60H-F (3287084898)

www.alfalaval.com

| | | |
|--------------------------|--------------|--------------------|
| CUSTOMER NAME / REF. NO. | TOTAL LENGTH | 126.2 mm |
| | TOTAL WIDTH | 94.0 mm |
| | TOTAL HEIGHT | 323.0 mm |
| COMPANY / REF. | | |
| | | 1/15/2024 REV 0 |