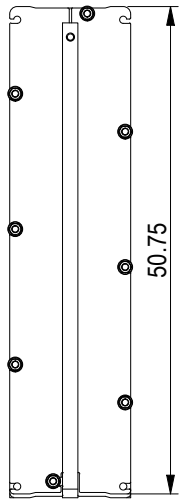


This document and its contents are subject to copyrights and other intellectual property rights owned by Alfa Laval (publ) or any of its affiliates (Alfa Laval). No part of this document may be copied, reproduced or transmitted in any form or by any means, or for any purpose, without Alfa Laval's prior express written permission. Information and services provided in this document are made as a benefit and service to the user, and no representations or warranties are made about the accuracy or suitability of this information and these services for any purpose. All rights are reserved.

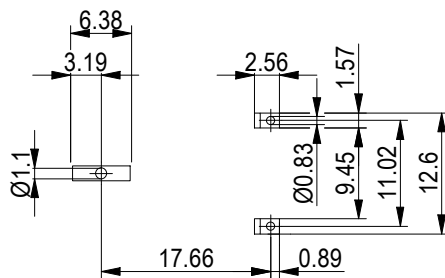
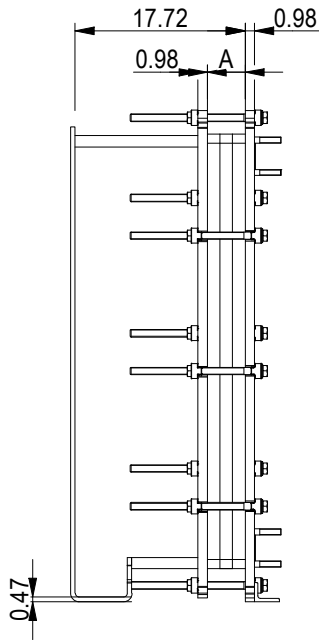
OPID 2204 es

4940063419

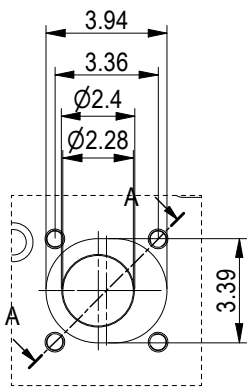
PRESSURE PLATE
(MOVABLE)



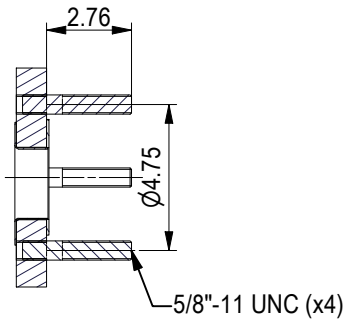
Space between pressure plate and supporting column should be kept free from fixed installations!



ASME B16.5 Class 150 NPS 2
S1, S2, S3, S4



A-A:
ALLOY 316

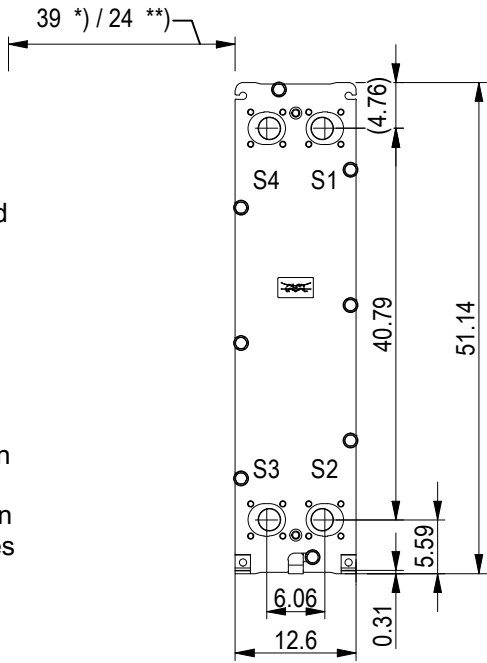


NO. OF UNITS

1

10.0 GPM
9.9 GPM

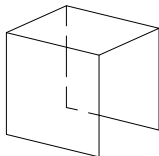
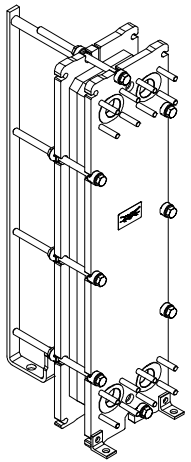
FRAME PLATE



*)
Recommended
free space
for opening
and closing
to be applied
on both sides

**)
Free space can
be reduced to
this distance on
one of the sides

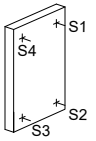
All dimensions in inches



PROTECTION SHEET



PRESSURE PLATE



FRAME PLATE

TIGHTENING BOLTS 6 x M20, L = 13.0 in
2 x M20, L = 13.0 in

APPROX. OUTER DIMENSIONS
LENGTH 25.6 in
WIDTH 13.0 in
HEIGHT 51.6 in
APPROX. WEIGHTS
NET WEIGHT, EMPTY 553 lb
WEIGHT FULL OF WATER 590 lb
PLATE MATERIAL ALLOY 316
PLATE THICKNESS 0.5 mm
GASKET NBRP Clip-on
AREA OF HEAT SURFACE 104.3 ft²



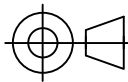
www.alfalaval.com

DRAWING
GASKETED PLATE HEAT EXCHANGER

TL6-BFG

ASME
Code Section VIII Div.1

MAWP 150 psi at 266.0 °F
MDMT -18.0 °F at 150 psi
Designed, constructed and stamped in accordance with 2021 ASME.



8240152996
TL6-BFG, 40 plates

Do not use this drawing for foundation bolting or piping layout
or planning of lifting and handling of the equipment.

DATE 6/13/23
REVISION 0