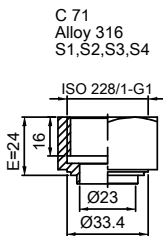
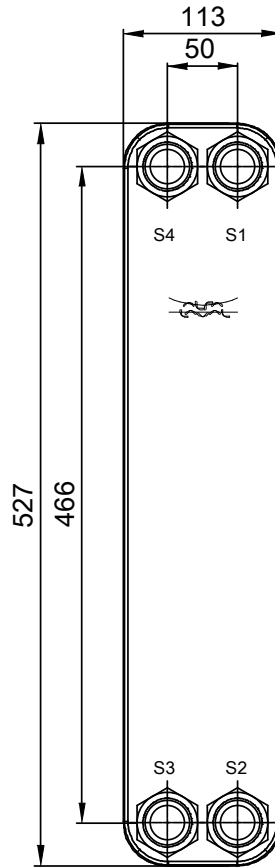
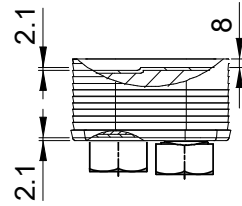
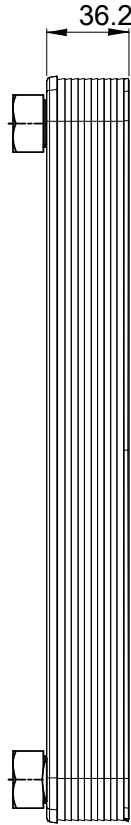


Note that all unique customer requirements (i.e tolerance) need to be verified thru Alfa Laval.



C 71
Alloy 316
S1,S2,S3,S4



HEATING SURFACE
NETWEIGHT 4.1 kg
OPERATING WEIGHT kg
PLATE MATERIAL ALLOY 316
PLATE GROUPING 1*4L/1*5L

Frameplate is depressed 2.1 mm at connections S3 and S4 if holed.
Pressureplate is depressed 2.1 mm at connections T3 and T4 if holed.

T1 T2 T3 T4 locations on back side correspond to S1 S2 S3 S4 on front side

ALL DIMENSIONS IN MILLIMETERS

SIDE	MEDIA	INLET	TEMP.	OUTLET	TEMP.	FLOW RATE	PRESSURE DROP	LIQUID VOL.
1		S1		S2				0.52 dm³
2		S3		S4				0.41 dm³

PRESSURE VESSEL APPROVAL

PED



CB60-10L (3287119536)

www.alfalaval.com

CUSTOMER NAME / REF. NO.

TOTAL LENGTH 60.2 mm
TOTAL WIDTH 113.0 mm
TOTAL HEIGHT 527.0 mm

COMPANY / REF.

4/16/2024
REV 0