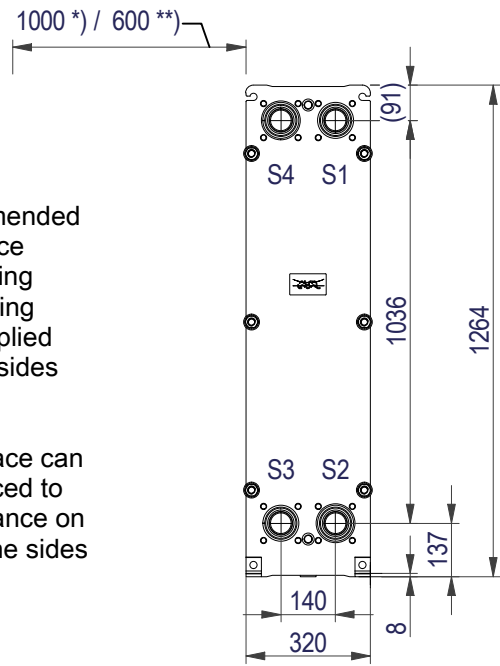


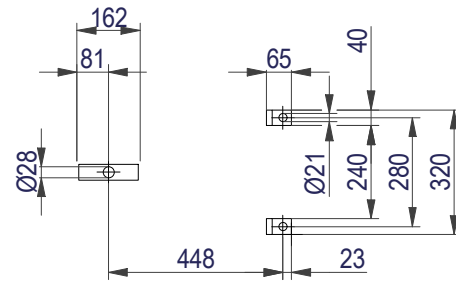
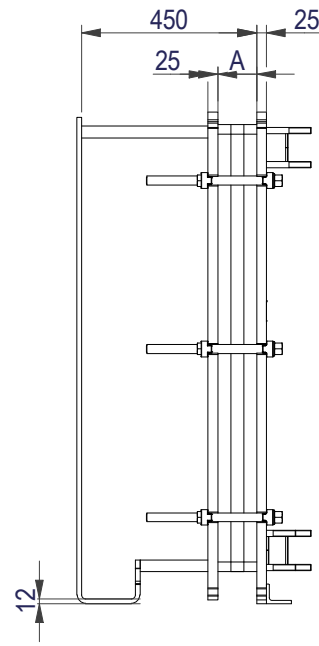
### FRAME PLATE



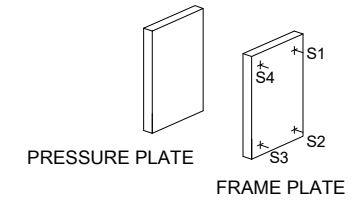
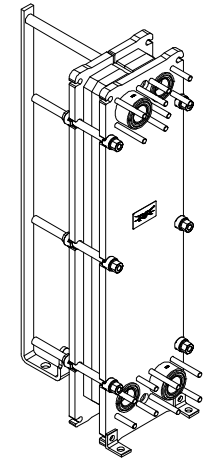
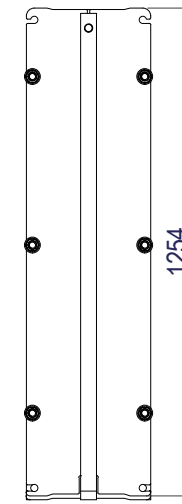
\*) Recommended free space for opening and closing to be applied on both sides

\*\*) Free space can be reduced to this distance on one of the sides

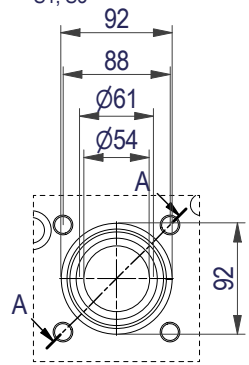
Space between pressure plate and supporting column should be kept free from fixed installations!



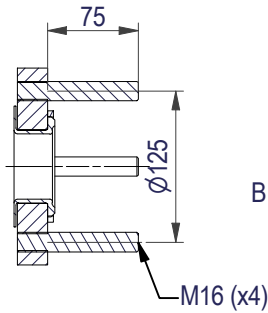
### PRESSURE PLATE (MOVABLE)



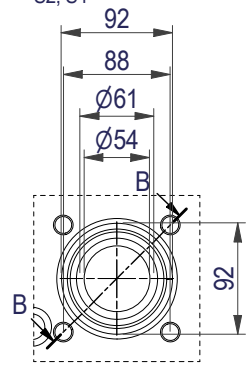
EN 1092-1 DN50 PN16  
S1, S3



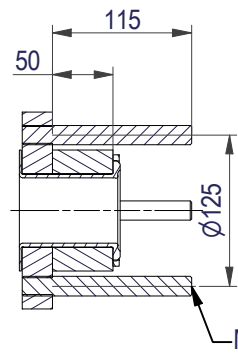
A-A:  
NBRP / ALLOY 254



EN 1092-1 DN50 PN16  
S2, S4



B-B:  
NBRP / ALLOY 254



All dimensions in millimeters (mm)

NO. OF UNITS

1

#### APPROX. OUTER DIMENSIONS

LENGTH 630 mm  
WIDTH 330 mm  
HEIGHT 1270 mm

#### APPROX. WEIGHTS

NET WEIGHT, EMPTY 241 kg  
WEIGHT FULL OF WATER 267 kg  
PLATE MATERIAL ALLOY 316  
PLATE THICKNESS 0.5 mm  
GASKET NBRP Clip-on

CHANNEL ARRANGEMENT 1\*29 L  
/ 1\*30 L

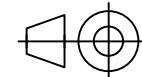


www.alfalaval.com

DRAWING  
GASKETED PLATE HEAT EXCHANGER

# TL6-BFM

PED Article 4.3



8240123155

Do not use this drawing for foundation bolting or piping layout

DATE 2/24/22  
REVISION 0