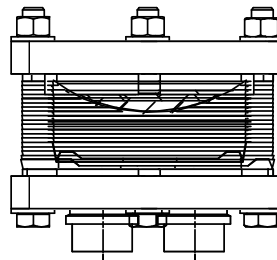
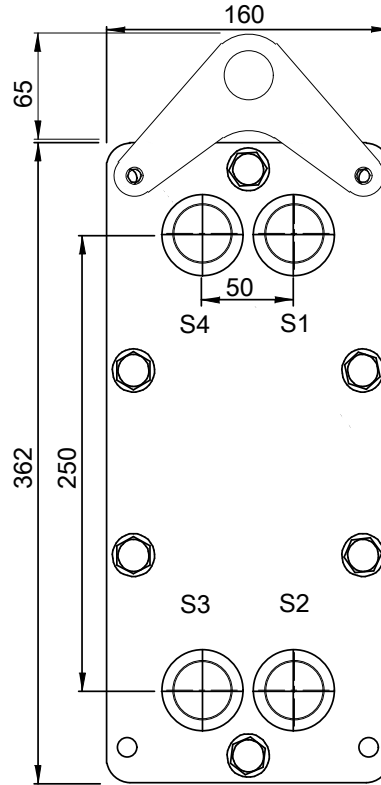
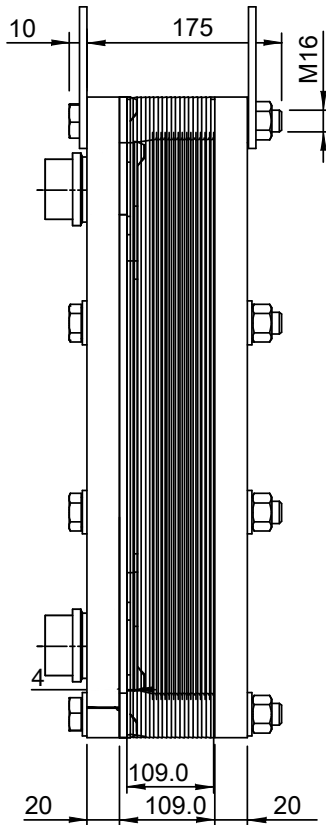
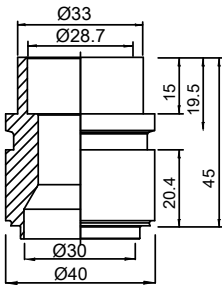


Note that all unique customer requirements (i.e tolerance) need to be verified thru Alfa Laval.

H2IXP
Alloy 304
S1,S2,S3,S4



HEATING SURFACE
NETWEIGHT 25.9 kg
OPERATING WEIGHT kg
PLATE MATERIAL ALLOY 316
PLATE GROUPING 1*19H/1*20H

T1 T2 T3 T4 locations on back side
correspond to S1 S2 S3 S4 on front side

ALL DIMENSIONS IN MILLIMETERS

SIDE	MEDIA	INLET	TEMP.	OUTLET	TEMP.	FLOW RATE	PRESSURE DROP	LIQUID VOL.
1		S1		S2				1.00 dm ³
2		S3		S4				0.95 dm ³

PRESSURE VESSEL APPROVAL

PED/UK



AXP27-40H-F (3075013277)

www.alfalaval.com

CUSTOMER NAME / REF. NO.

TOTAL LENGTH 196.0 mm
TOTAL WIDTH 160.0 mm
TOTAL HEIGHT 362.0 mm

COMPANY / REF.

4/16/2024
REV 0