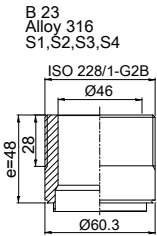
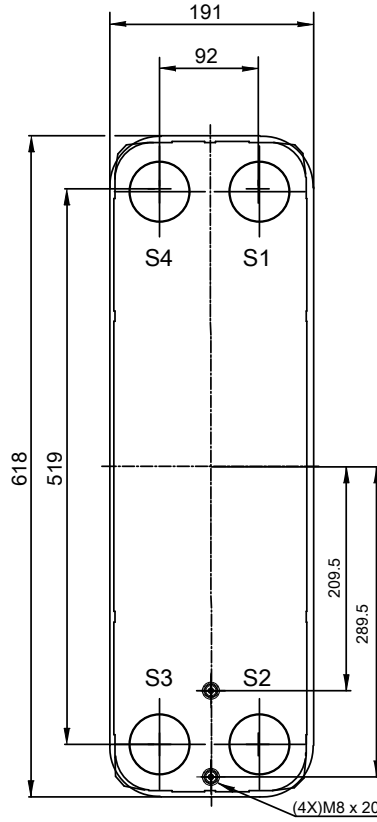
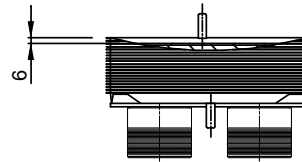
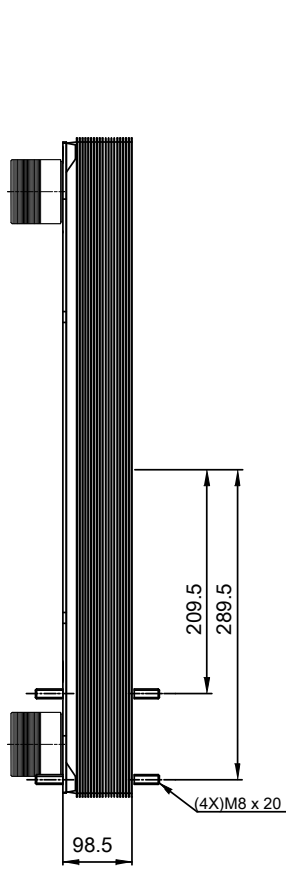
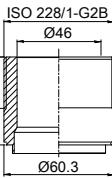


Note that all unique customer requirements (i.e tolerance) need to be verified thru Alfa Laval.



B 23
Alloy 316
S1, S2, S3, S4



HEATING SURFACE
NETWEIGHT 19.7 kg
OPERATING WEIGHT kg
PLATE MATERIAL ALLOY 316
PLATE GROUPING 1*14L/1*15L

T1 T2 T3 T4 locations on back side correspond to S1 S2 S3 S4 on front side

ALL DIMENSIONS IN MILLIMETERS

| SIDE | MEDIA | INLET | TEMP. | OUTLET | TEMP. | FLOW RATE | PRESSURE DROP | LIQUID VOL. |
|------|-------|-------|-------|--------|-------|-----------|---------------|----------------------|
| 1 | | S1 | | S2 | | | | 3.75 dm ³ |
| 2 | | S3 | | S4 | | | | 3.50 dm ³ |

PRESSURE VESSEL APPROVAL

PED/UK



AlfaNova 76L-30L (3287059286)

www.alfalaval.com

CUSTOMER NAME / REF. NO.

COMPANY / REF.

TOTAL LENGTH 161.5 mm
TOTAL WIDTH 191.0 mm
TOTAL HEIGHT 618.0 mm



1/15/2024
REV 0