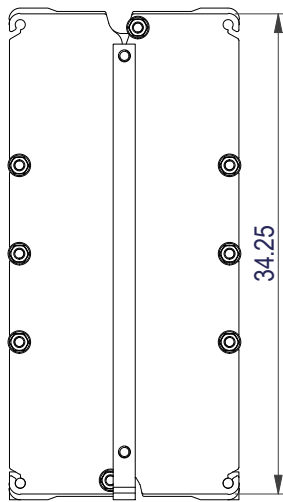


This document and its contents are subject to copyrights and other intellectual property rights owned by Alfa Laval (publ) or any of its affiliates (Alfa Laval). No part of this document may be copied, reproduced or transmitted in any form or by any means, or for any purpose, without Alfa Laval's prior express written permission. Information and services provided in this document are made as a benefit and service to the user, and no representations or warranties are made about the accuracy or suitability of this information and these services for any purpose. All rights are reserved.

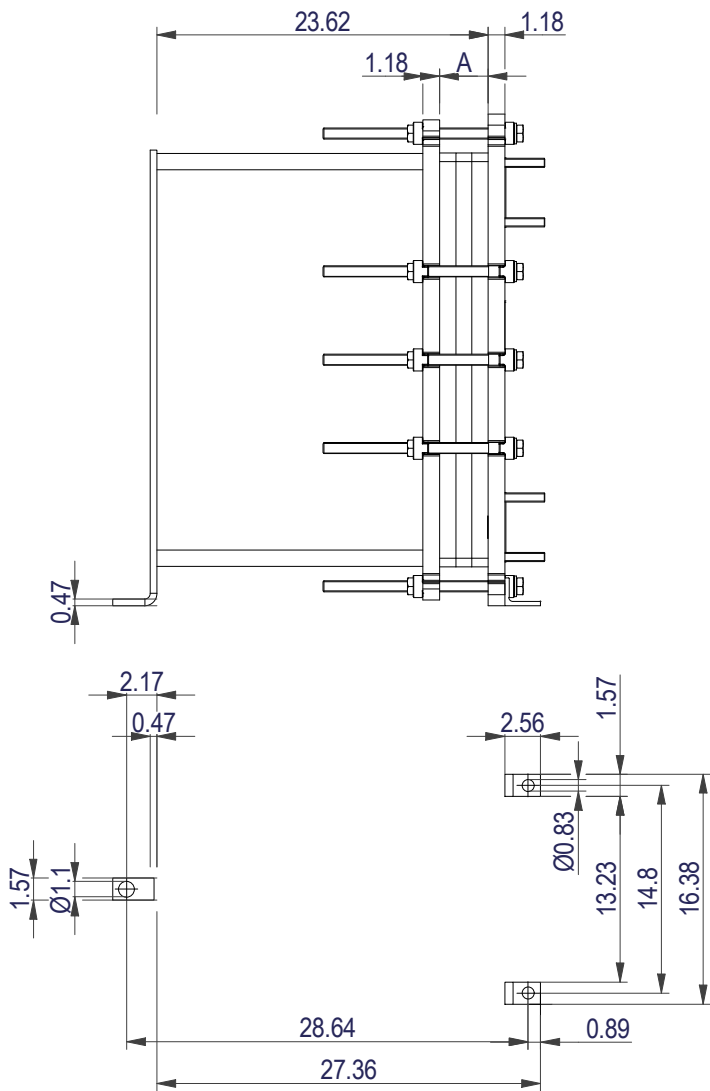
OPID 2204 ee

4940063453

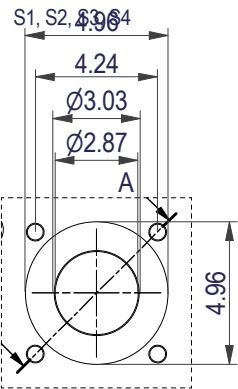
**PRESSURE PLATE**  
(MOVABLE)



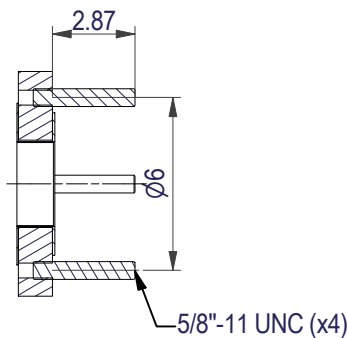
Space between pressure plate and supporting column should be kept free from fixed installations!



ASME B16.5 Class 150 NPS 3



A-A:  
ALLOY 316

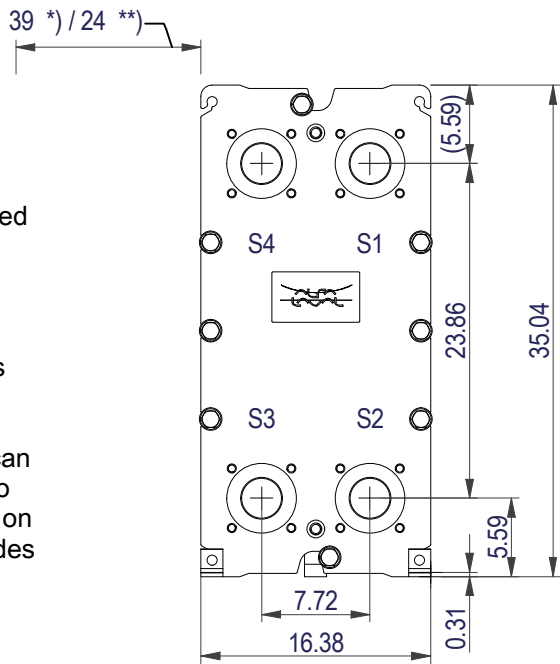


NO. OF UNITS

1

10.0 GPM  
9.9 GPM

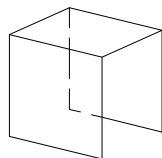
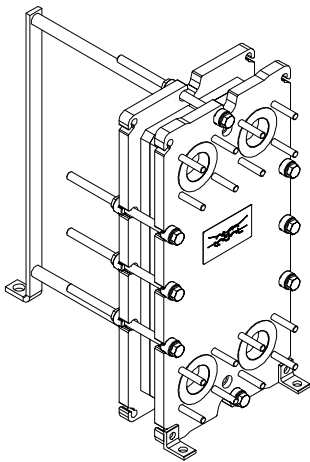
**FRAME PLATE**



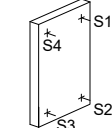
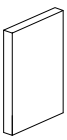
\*)  
Recommended  
free space  
for opening  
and closing  
to be applied  
on both sides

\*\*)  
Free space can  
be reduced to  
this distance on  
one of the sides

All dimensions in inches



PROTECTION SHEET



PRESSURE PLATE  
FRAME PLATE

TIGHTENING BOLTS 4 x M20, L = 13.0 in  
4 x M20, L = 13.0 in

APPROX. OUTER DIMENSIONS  
LENGTH 31.1 in  
WIDTH 16.9 in  
HEIGHT 35.4 in  
APPROX. WEIGHTS  
NET WEIGHT, EMPTY 516 lb  
WEIGHT FULL OF WATER 553 lb  
PLATE MATERIAL ALLOY 316  
PLATE THICKNESS 0.5 mm  
GASKET NBRP ClipGrip™  
AREA OF HEAT SURFACE 42.1 ft²



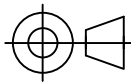
www.alfalaval.com

DRAWING  
GASKETED PLATE HEAT EXCHANGER

**T8-MFG**

ASME  
Code Section VIII Div.1

MAWP 150 psi at 266.0 °F  
MDMT -18.0 °F at 150 psi  
Designed, constructed and stamped in accordance with 2021 ASME.



8240152983  
T8-MFG, 25 plates

Do not use this drawing for foundation bolting or piping layout  
or planning of lifting and handling of the equipment.

DATE 6/13/23  
REVISION 0