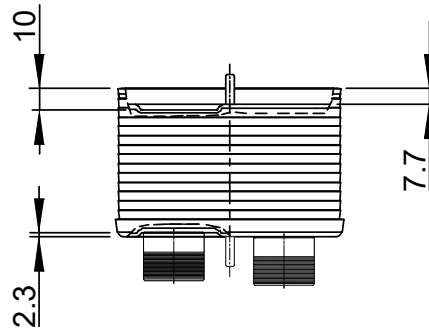
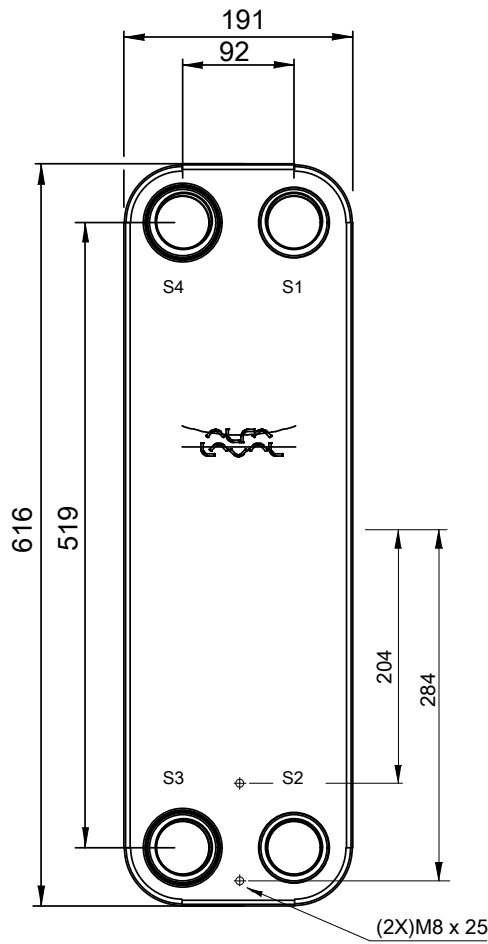
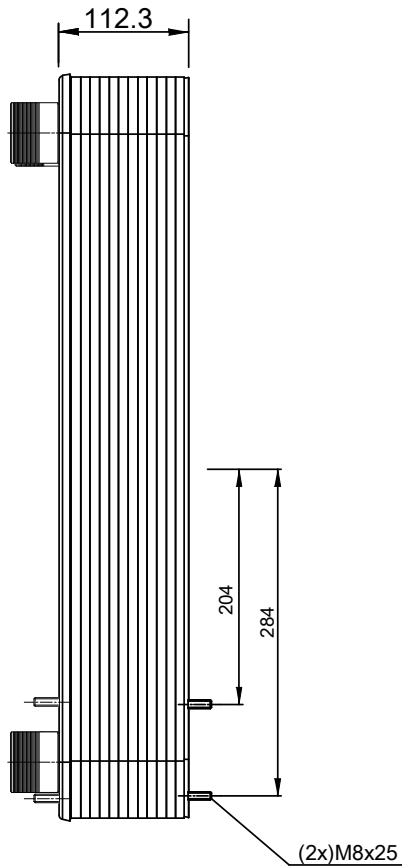
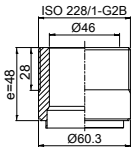


Note that all unique customer requirements (i.e tolerance) need to be verified thru Alfa Laval.



B 23  
Alloy 316  
S1,S2,S3,S4



HEATING SURFACE  
NETWEIGHT 19.9 kg  
OPERATING WEIGHT kg  
PLATE MATERIAL ALLOY 316  
PLATE GROUPING 1\*18ML/1\*19MH

ALL DIMENSIONS IN MILLIMETERS

| SIDE | MEDIA | INLET | TEMP. | OUTLET | TEMP. | FLOW RATE | PRESSURE DROP | LIQUID VOL.          |
|------|-------|-------|-------|--------|-------|-----------|---------------|----------------------|
| 1    |       | S1    |       | S2     |       |           |               | 3.99 dm <sup>3</sup> |
| 2    |       | S3    |       | S4     |       |           |               | 3.78 dm <sup>3</sup> |

PRESSURE VESSEL APPROVAL

PED

CB110-38M (3287101591)

[www.alfalaval.com](http://www.alfalaval.com)

CUSTOMER NAME / REF. NO.

TOTAL LENGTH 175.3 mm  
TOTAL WIDTH 191.0 mm  
TOTAL HEIGHT 616.0 mm

COMPANY / REF.



1/15/2024  
REV 0