

Alfa Laval SB Mini Flow Valve

Single seat valves

Introduction

The Alfa Laval SB Mini Flow Valve is a reliable single seat valve with a single contact surface between the plug and the seat to minimize the risk of contamination. Designed for working in a gas or liquid environment, it is used to close or divert small product flows when hygienic shut off and changeover are required.

Application

The SB Mini Flow Valve is designed for diverting or closing small product flows in a broad range of applications across the brewery, food, dairy, beverage and many other industries. The valve can be used as an integral part of a SCANDI BREW® tank top system.

Benefits

- Versatile shut-off or changeover valve
- Handles small flows of liquid or gas with ease
- Compact and hygienic design
- Low maintenance
- Fast-acting

Standard design

The SB Mini Flow Valve comprises a valve body, inlet and outlet, with threaded pipe couplings for 6/8 mm pipe. Four versions are available: a pneumatic angle valve, a pneumatic two-way valve, a drain valve with fittings, or a drain valve with fittings and clip-on. The valve can also be used as an integral part of a SCANDI BREW® tank top system.

Working principle

The Alfa Laval SB Mini Flow Valve is operated either manually or by means of compressed air from a remote location. For a



pneumatic valve, the actuator smooths operation and protects process lines from pressure peaks.

Technical data

Pressure

Max. product pressure:	6 bar / 87 PSI
Process air pressure:	6 - 8 bar / 87 - 116 PSI

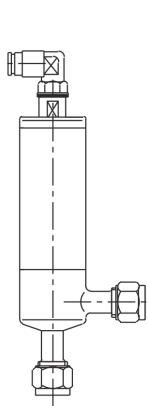
Valve data

Nominal size	6 mm
Noise	70 dB(A)
Temperature range	1 °C - 100 °C / 33 °F - 212 °F
Pipe connection	O.D 8x1 mm
Fluids	Liquid and gas
Weight	0.5 kg

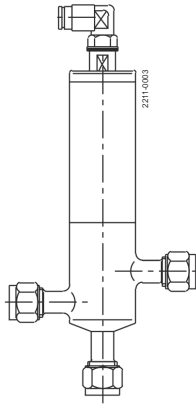
Physical data

Materials

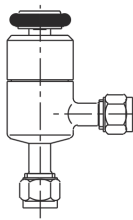
Product wetted steel parts:	EN 1.4404 (AISI 316L)
Product wetted steel surfaces:	Surface roughness Ra<1.6µm
Product wetted seals:	EPDM
Product wetted polymers:	PTFE



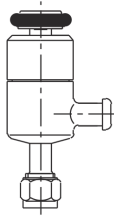
Pneumatic angle valve



Pneumatic 2-way valve

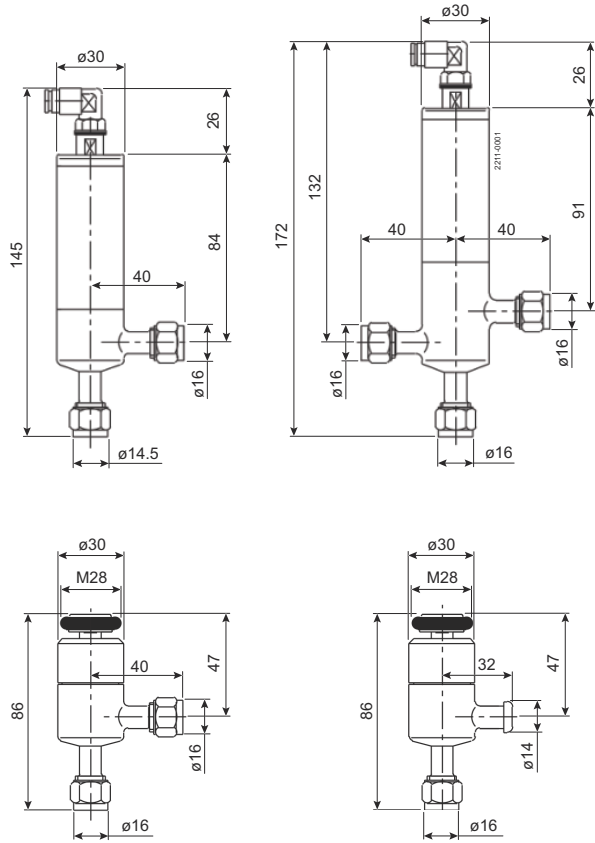


Drain valve with fittings



Drain valve with fittings/clip-on

Dimensions (mm)



This document and its contents are subject to copyrights and other intellectual property rights owned by Alfa Laval AB (publ) or any of its affiliates (jointly "Alfa Laval"). No part of this document may be copied, re-produced or transmitted in any form or by any means, or for any purpose, without Alfa Laval's prior express written permission. Information and services provided in this document are made as a benefit and service to the user, and no representations or warranties are made about the accuracy or suitability of this information and these services for any purpose. All rights are reserved.

How to contact Alfa Laval

Up-to-date Alfa Laval contact details for all countries are always available on our website at www.alfalaval.com