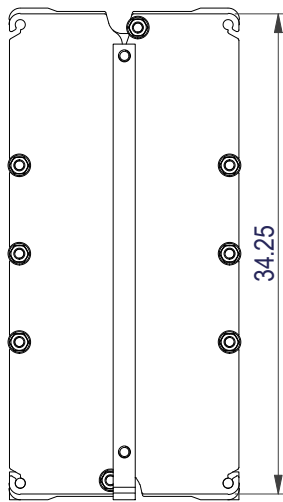


This document and its contents are subject to copyrights and other intellectual property rights owned by Alfa Laval (publ) or any of its affiliates (Alfa Laval). No part of this document may be copied, reproduced or transmitted in any form or by any means, or for any purpose, without Alfa Laval's prior express written permission. Information and services provided in this document are made as a benefit and service to the user, and no representations or warranties are made about the accuracy or suitability of this information and these services for any purpose. All rights are reserved.

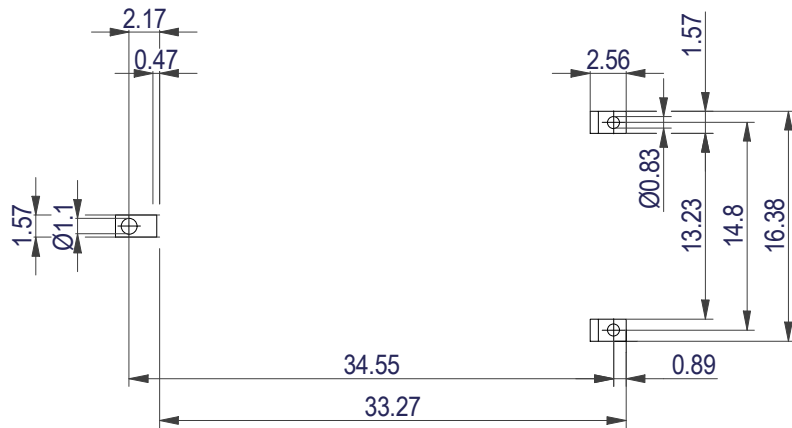
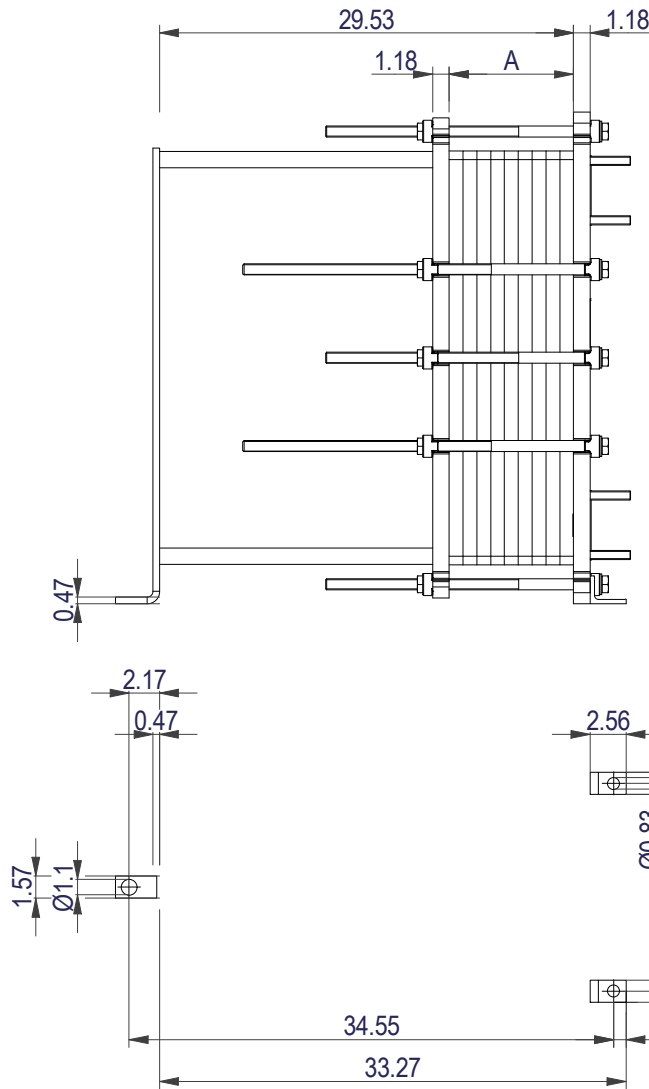
OPID 2204 es

4940063464

PRESSURE PLATE
(MOVABLE)



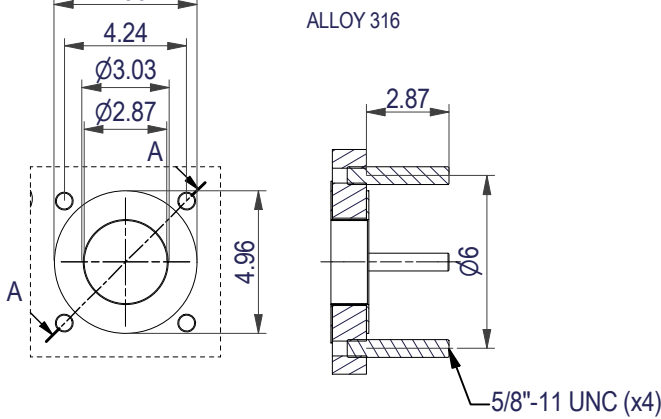
Space between pressure plate and supporting column should be kept free from fixed installations!



ASME B16.5 Class 150 NPS 3

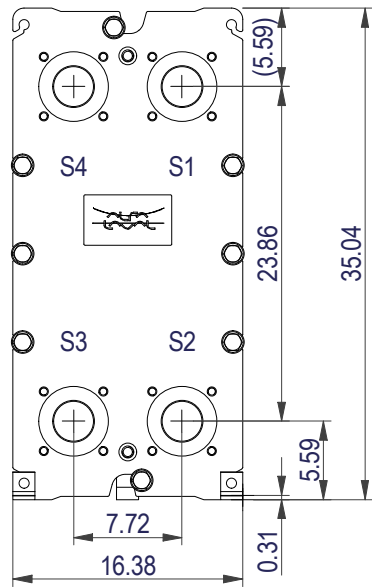
S1, S2, S3, S4

A-A:
ALLOY 316



FRAME PLATE

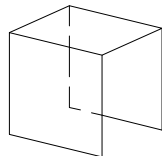
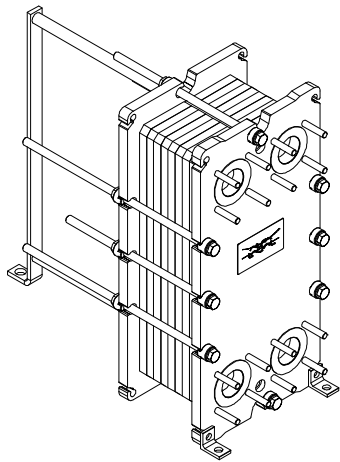
39 *) / 24 **)



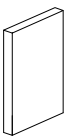
*)
Recommended
free space
for opening
and closing
to be applied
on both sides

**)
Free space can
be reduced to
this distance on
one of the sides

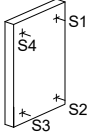
All dimensions in inches



PROTECTION SHEET



PRESSURE PLATE



FRAME PLATE

TIGHTENING BOLTS
4 x M20, L = 24.8 in
4 x M20, L = 18.9 in

APPROX. OUTER DIMENSIONS
LENGTH 37.0 in
WIDTH 16.9 in
HEIGHT 35.4 in
APPROX. WEIGHTS
NET WEIGHT, EMPTY 597 lb
WEIGHT FULL OF WATER 673 lb
PLATE MATERIAL ALLOY 316
PLATE THICKNESS 0.5 mm
GASKET NBRP ClipGrip™
AREA OF HEAT SURFACE 87.8 ft²

NO. OF UNITS

1

10.0 GPM
9.9 GPM



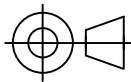
www.alfalaval.com

DRAWING
GASKETED PLATE HEAT EXCHANGER

T8-MFG

ASME
Code Section VIII Div.1

MAWP 150 psi at 266.0 °F
MDMT -18.0 °F at 150 psi
Designed, constructed and stamped in accordance with 2021 ASME.



8240152988
T8-MFG, 50 plates

Do not use this drawing for foundation bolting or piping layout
or planning of lifting and handling of the equipment.

DATE 6/13/23
REVISION 0