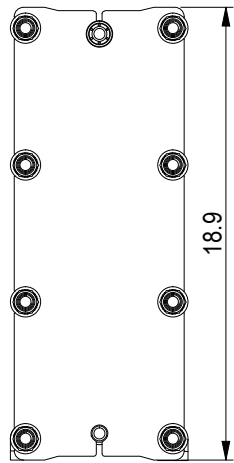
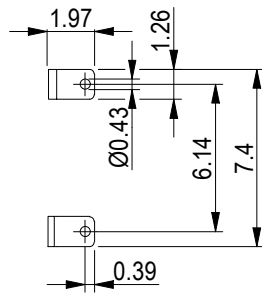
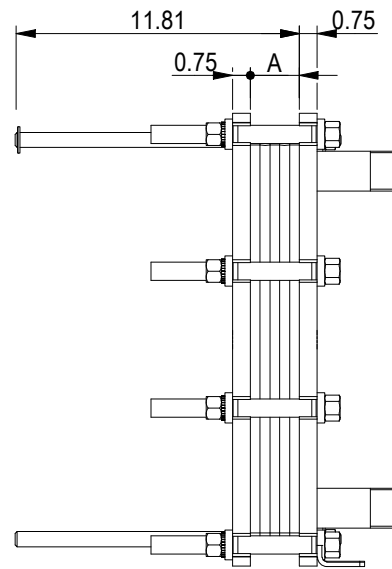


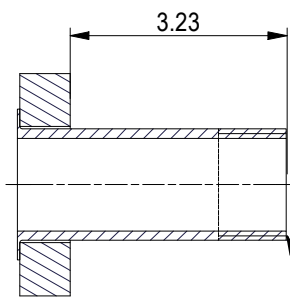
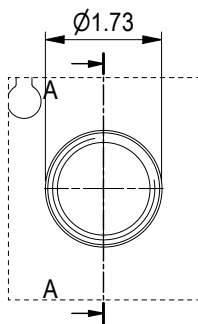
PRESSURE PLATE
(MOVABLE)



Space between pressure plate and supporting column should be kept free from fixed installations!



ASME B1.20.1 - 1 1/4-11.5 NPT, ALLOY 316, 101 mm
S1, S2, S3, S4 A-A:

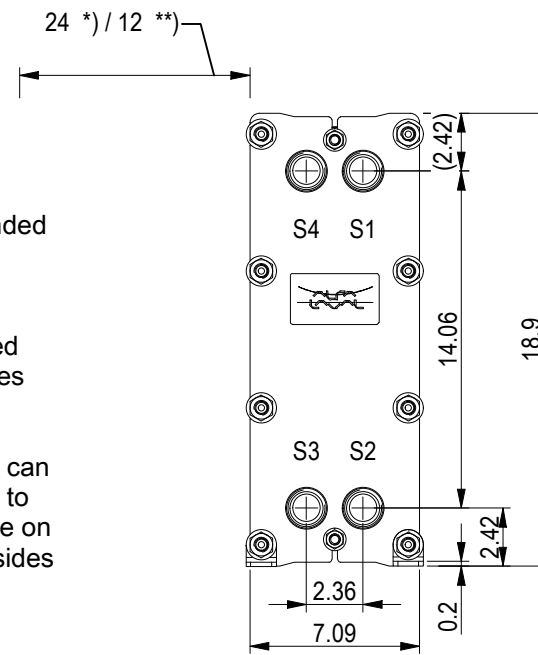


ASME B1.20.1 - 1 1/4-11.5 NPT

NO. OF UNITS 1

25.0 GPM
20.0 GPM

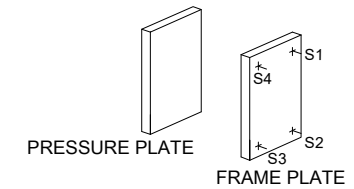
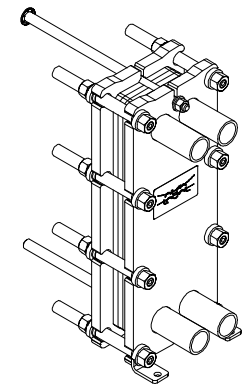
FRAME PLATE



*) Recommended free space for opening and closing to be applied on both sides

**) Free space can be reduced to this distance on one of the sides

All dimensions in inches



TIGHTENING BOLTS 4 x M16, L = 7.1 in
4 x M16, L = 7.1 in

APPROX. OUTER DIMENSIONS
LENGTH 15.4 in
WIDTH 7.5 in
HEIGHT 19.3 in
APPROX. WEIGHTS
NET WEIGHT, EMPTY 79.4 lb
WEIGHT FULL OF WATER 85.4 lb
PLATE MATERIAL ALLOY 316
PLATE THICKNESS 0.5 mm
GASKET NBRP Clip-on
AREA OF HEAT SURFACE 7.9 ft²

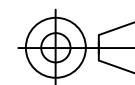


www.alfalaval.com

DRAWING
GASKETED PLATE HEAT EXCHANGER
M3-FG

ASME
Code Section VIII Div.1

MAWP 150 psi at 266.0 °F
MDMT -18.0 °F at 150 psi
Designed, constructed and stamped in accordance with 2021 ASME.



8240171385
M3-FG-25 Plates

Do not use this drawing for foundation bolting or piping layout
or planning of lifting and handling of the equipment.

DATE 6/12/23
REVISION 0