

Fast track by Alfa Laval

- Delivered in days.
- Delivers for decades.



Gasketed Plate Heat Exchangers

T-Series



Fast Track by Alfa Laval

Fast Track by Alfa Laval

- Delivered in Days
- Delivers for Decades

Delivered in days, delivering for decades

Fast track is the first standardized line of plate heat exchangers to guarantee fast, energy efficient results without compromising on quality.

Fast track allows you to instantly place orders from a selection of suitable heat exchangers which will be shipped to you in days.

How to contact Alfa Laval

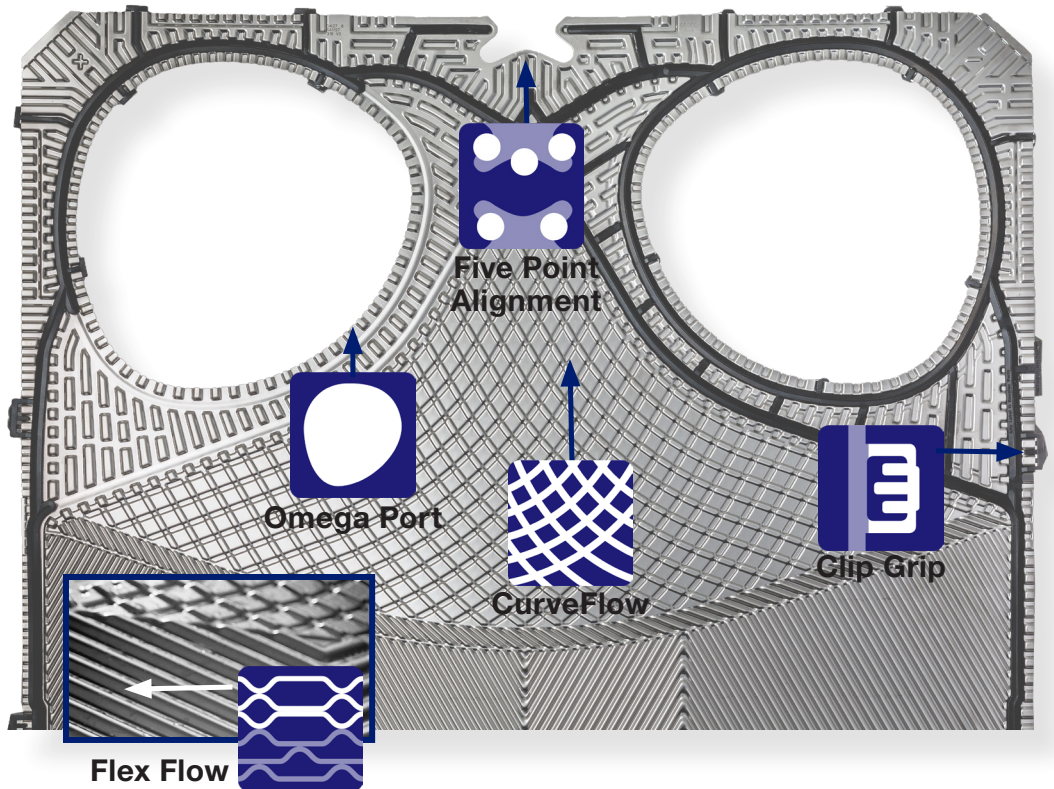
Contact details for all countries are continually updated on our web site. Please visit www.alfalaval.us to access the information.

Features that help you achieve a new standard


Alfa Laval's next-generation gasketed plate heat exchangers contain unique features to help your business achieve new levels of efficiency, reliability and serviceability.

Efficiency





- 
CurveFlow™ distributor area
 Improves media flow and minimizes the risk of fouling
- 
Offset Gasket Groove
 Ensures full plate utilization for maximum heat transfer efficiency
- 
OmegaPort™ non circular port holes
 Ensures thermal efficiency at lower pressure drops
- 
FlexFlow™ plate design Improves thermal efficiency and optimizes pressure drop utilization



Reliability

- 
Five-point alignment
 Ensures reliable plate positioning and easy service of large units

Serviceability

- 
ClipGrip™ gasket attachment
 Ensures perfect seal and trouble-free maintenance
- 
Bearing boxes
 Makes opening and closing the unit faster for more efficient maintenance
- 
T-bar roller
 Provides a lower unit that is easy to service
- 
Compact frame
 Allows more heat exchange area in a smaller footprint

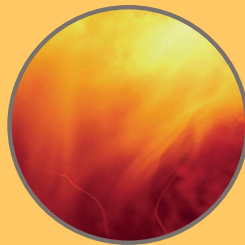
Manufacturing applications



Machining
Cutting/Forming/
Pressing
Coolant oils



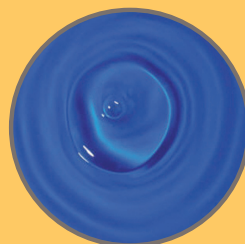
Degreasing
Washing/
Degreasing
Water Solvent



Heat treatment
Quenching/
Annealing
Quench oils,
Process water



Automotive
Oil, Water, Air



Surface treatment
Phosphating/Plating/
Anodizing/Painting
Acids, Paint

Alfa Laval Industrial Fast Track Line

Fast Track are a selection of models from our industrial line. These pre-configured units are suitable for most applications used in HVAC and light industry duties.



The Fast Track units are packed with the latest technology, along with some of Alfa Laval's innovative features, to ensure you save both cost and energy.

Scope of Alfa Laval Industrial line*

Dimensions	From	To
Port size	1 1/4"	4"
Height	19"	50"
Width	7"	19"

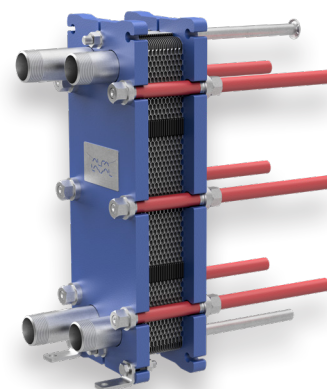
Actual values may vary based on the frame, plates, and gaskets used in the final configuration. Your local sales representative would be happy to assist you if you have any questions.

	Hydraulic Oil ISO VG 46/Water	General Cooling Water/Water	General Heating Water/Water
TempIn Hot(°F)	176	100	176
TempOut Hot(°F)	131	♦72-90	140
TempIn Cold (°F)	68	65	130
TempOut Cold (°F)	140	♦76-93	160
Max PSIG Hot/Cold	10	10	10

♦Outlet Temperature range varies for different units

Temperature In
Temperature Out chart.

Model M3

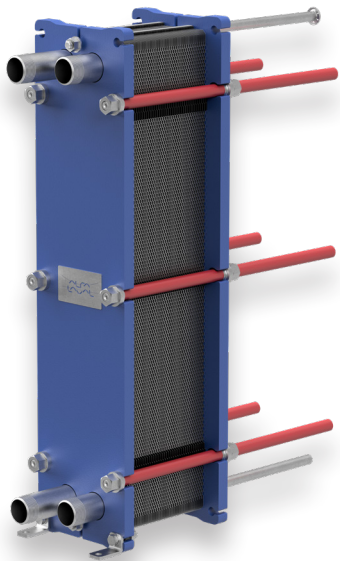


Height	18.9"
Width	7.09"
Min Length	16.5"
Max Length	24.4"
Type of Connection	Stainless Steel Pipe
Connection Size	1-1/4" NPT
Plate Material	316 Stainless Steel
Plate Thickness	0.50"

Model	Plates	Part #	Oil Cooling		General Cooling		General Heating	
			Capacity (kbtu/h)	Flow Rate (GPM)	Capacity (kbtu/h)	Flow Rate (GPM)	Capacity (kbtu/h)	Flow Rate (GPM)
M3	15	8240170849	5	1	50	5	50	3
M3	20	8240171381	10	1	100	10	65	4
M3	25	8240171385	12	1.5	150	20	80	5
M3	30	8240171386	15	2	200	25	100	6
M3	35	8240171388	18	2	250	30	125	7
M3	40	8240171391	20	2.5	300	35	150	9
M3	45	8240171392	25	3	350	40	165	10

See Temperature In / Temperature Out table on page 4.

Model TL3



Height	31.1"
Width	7.5"
Min Length	16.5"
Max Length	53.9"
Type of Connection	Stainless Steel Pipe
Connection Size	1-1/4" NPT
Plate Material	316 Stainless Steel
Plate Thickness	0.50"

Model	Plates	Part #	Oil Cooling		General Cooling		General Heating		
			Capacity (kbtu/h)	Flow Rate (GPM)	Capacity (kbtu/h)	Flow Rate (GPM)	Capacity (kbtu/h)	Flow Rate (GPM)	
Small Pressing Depth	TL3B	10	8240171407	50	5	100	10	75	4
	TL3B	15	8240171409	100	10	150	15	125	7
	TL3B	20	8240171411	150	16	200	20	200	11
	TL3B	25	8240171412	200	22	250	25	250	14
	TL3B	30	8240171414	250	27	300	30	300	17
	TL3B	35	8240171415	300	33	350	35	350	20
	TL3B	40	8240171418	350	38	400	40	400	23
	TL3B	45	8240171419	400	44	450	45	475	27
	TL3B	50	8240171421	450	50	500	50	550	31
Medium Pressing Depth	TL3P	10	8240171425	15	2	50	5	40	2
	TL3P	15	8240171427	30	3	75	8	100	5
	TL3P	20	8240171428	40	4	100	10	150	8
	TL3P	25	8240171430	50	5	150	15	175	10
	TL3P	30	8240171431	60	6	175	18	200	11
	TL3P	35	8240171432	70	8	200	20	250	14
	TL3P	40	8240171434	80	9	225	23	325	18
	TL3P	45	8240171436	90	10	250	25	350	20
	TL3P	50	8240171437	100	11	300	30	400	23

See Temperature In / Temperature Out table on page 4.

Model T5

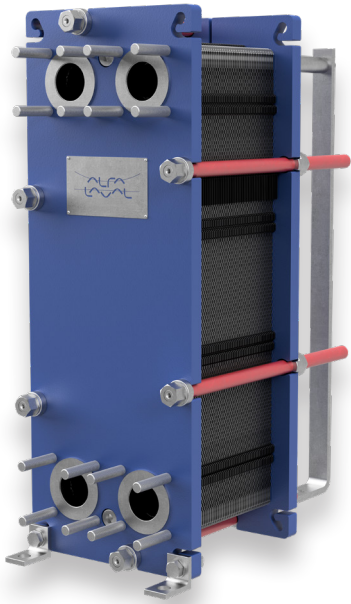
Height	29"
Width	9.7"
Min Length	5.9"
Max Length	13.8"
Type of Connection	Stainless Steel Pipe
Connection Size	2" NPT
Plate Material	316 Stainless Steel
Plate Thickness	0.50"



Model	Plates	Part #	Oil Cooling		General Cooling		General Heating		
			Capacity (kbtu/h)	Flow Rate (GPM)	Capacity (kbtu/h)	Flow Rate (GPM)	Capacity (kbtu/h)	Flow Rate (GPM)	
Small Pressing Depth	T5B	15	8240171453	90	10	200	20	100	6
	T5B	20	8240171459	125	14	300	30	150	9
	T5B	25	8240171460	150	17	400	40	200	11
	T5B	30	8240171462	200	22	500	50	250	14
	T5B	35	8240171464	250	27	600	60	300	17
	T5B	40	8240171483	300	33	700	70	350	20
	T5B	45	8240171484	350	38	800	80	400	23
	T5B	50	8240171485	400	44	900	90	450	25
	T5B	60	8240171487	450	50	1100	100	575	33
	T5B	70	8240171488	500	55	1200	120	675	38
Large Pressing Depth	T5M	15	8240171443	25	3	150	15	175	10
	T5M	20	8240171444	40	4	200	20	250	14
	T5M	25	8240171445	50	5	250	25	300	17
	T5M	30	8240171448	60	7	300	30	400	23
	T5M	35	8240171449	80	9	350	35	450	25
	T5M	40	8240171450	100	11	400	40	550	31
	T5M	50	8240171452	125	14	450	45	700	40

See Temperature In / Temperature Out table on page 4.

Model T6



Height	35"
Width	12.6"
Min Length	18.7"
Max Length	54.2"
Type of Connection	Stainless Steel Lined
Connection Size	2" Studded Port
Pressure Rating	150#
Plate Material	316 Stainless Steel
Plate Thickness	0.50"

Model	Plates	Part #	Oil Cooling		General Cooling		General Heating		
			Capacity (kbtu/h)	Flow Rate (GPM)	Capacity (kbtu/h)	Flow Rate (GPM)	Capacity (kbtu/h)	Flow Rate (GPM)	
Small Pressing Depth	T6B	15	8240152969	200	20	300	20	250	14
	T6B	20	8240152971	275	30	400	30	350	20
	T6B	25	8240152972	350	40	500	40	500	28
	T6B	30	8240152974	425	45	600	50	600	34
	T6B	35	8240152975	500	55	700	60	700	40
	T6B	40	8240152976	575	60	800	70	850	48
	T6B	45	8240152977	650	70	900	80	1000	57
	T6B	50	8240152978	725	80	1000	90	1100	63
	T6B	55	8240152979	800	90	1100	100	1200	68
	T6B	60	8240152980	875	95	1200	110	1300	75
	T6B	70	8240152981	1,000	110	1300	120	1600	91
Medium Pressing Depth	T6P	15	8240152960	100	10	150	15	200	11
	T6P	20	8240152959	125	13	200	20	300	17
	T6P	25	8240152961	150	16	250	25	400	22
	T6P	30	8240152962	175	20	300	30	500	28
	T6P	35	8240152963	200	22	350	35	600	34
	T6P	40	8240152964	225	24	400	40	700	40
	T6P	45	8240152965	250	27	450	45	800	45
	T6P	50	8240152966	275	30	500	50	850	48
	T6P	60	8240152967	300	33	600	60	1100	62
	T6P	70	8240152968	350	38	700	70	1300	74

See Temperature In / Temperature Out table on page 4.

Model TL6

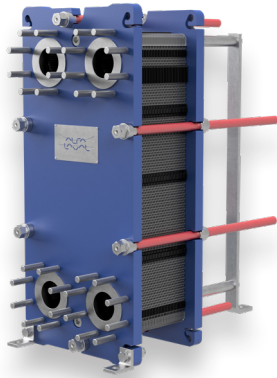


Height	49.8"
Width	12.6"
Min Length	24.6"
Max Length	66.5"
Type of Connection	Stainless Steel Lined
Connection Size	2" Studded Port
Pressure Rating	150#
Plate Material	316 Stainless Steel
Plate Thickness	0.50"

Model	Plates	Part #	Oil Cooling		General Cooling		General Heating	
			Capacity (kbtu/h)	Flow Rate (GPM)	Capacity (kbtu/h)	Flow Rate (GPM)	Capacity (kbtu/h)	Flow Rate (GPM)
TL6B	20	8240152994	1,000	110	400	30	600	35
TL6B	30	8240152995	1,500	160	800	60	1000	57
TL6B	40	8240152996	2,000	210	1100	80	1500	85
TL6B	50	8240152997	2,500	270	1350	100	1750	105
TL6B	60	8240152998	NR	NR	1600	115	2150	123
TL6B	70	8240152999	NR	NR	1800	130	2500	145
TL6B	80	8240153000	NR	NR	2100	150	2900	165
TL6B	90	8240153001	NR	NR	2300	170	3200	185
TL6B	100	8240153002	NR	NR	2500	180	3500	200

See Temperature In / Temperature Out table on page 4.

Model T8

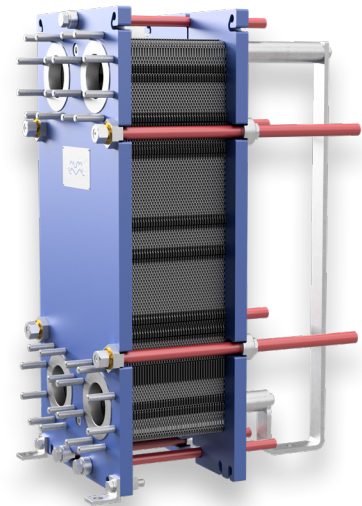


Height	35"
Width	15.78"
Min Length	18.86"
Max Length	66.38"
Type of Connection	Stainless Steel Lined
Connection Size	3" Studded Port
Pressure Rating	150#
Plate Material	316 Stainless Steel
Plate Thickness	0.50"

Model	Plates	Part #	Oil Cooling		General Cooling		General Heating		
			Capacity (kbtu/h)	Flow Rate (GPM)	Capacity (kbtu/h)	Flow Rate (GPM)	Capacity (kbtu/h)	Flow Rate (GPM)	
Small Pressing Depth	T8B	20	8240152989	150	15	300	25	400	23
	T8B	30	8240152990	225	25	400	45	600	34
	T8B	40	8240152991	300	33	500	65	900	51
	T8B	50	8240152992	375	40	800	100	1100	62
	T8B	60	8240152993	450	50	1000	125	1350	77
Large Pressing Depth	T8M	20	8240152982	30	3	200	40	350	20
	T8M	25	8240152983	40	4	250	50	450	25
	T8M	30	8240152984	50	5	300	60	550	31
	T8M	35	8240152985	60	6	350	70	650	37
	T8M	40	8240152986	70	8	400	80	750	43
	T8M	45	8240152987	80	9	500	100	850	49
	T8M	50	8240152988	90	10	700	110	950	55

See Temperature In / Temperature Out table on page 4.

Model T10



Height	41.5"
Width	18.5"
Min Length	16.14"
Max Length	76"
Type of Connection	Stainless Steel Lined
Connection Size	4" Studded Port
Pressure Rating	150#
Plate Material	316 Stainless Steel
Plate Thickness	0.50"

Model	Plates	Part #	Oil Cooling		General Cooling		General Heating		
			Capacity (kbtu/h)	Flow Rate (GPM)	Capacity (kbtu/h)	Flow Rate (GPM)	Capacity (kbtu/h)	Flow Rate (GPM)	
Small Pressing Depth	T10B	20	8240153010	200	20	950	95	400	23
	T10B	30	8240153011	325	35	1500	150	700	40
	T10B	40	8240153012	450	50	1900	200	950	54
	T10B	50	8240153013	600	65	2300	230	1300	75
	T10B	60	8240153014	750	80	2700	270	1550	88
	T10B	70	8240153015	900	100	3200	320	1800	103
	T10B	80	8240153016	1100	120	3700	370	2000	114
	T10B	90	8240153018	1250	135	4200	420	2300	131
	T10B	100	8240153019	1400	150	4700	470	3500	200
	T10B	110	8240153020	1500	160	5200	520	3800	217
Large Pressing Depth	T10M	20	8240153003	50	5	1200	120	450	25
	T10M	30	8240153004	100	10	1700	170	650	37
	T10M	40	8240153005	150	16	1100	110	900	51
	T10M	50	8240153006	200	21	1400	140	1250	71
	T10M	60	8240153007	250	27	1700	170	1750	97
	T10M	70	8240153008	300	32	2000	200	1900	108

See Temperature In / Temperature Out table on page 4.



This is Alfa Laval

Alfa Laval is active in the areas of Energy, Marine, and Food & Water, offering its expertise, products, and service to a wide range of industries in some 100 countries. The company is committed to optimizing processes, creating responsible growth, and driving progress – always going the extra mile to support customers in achieving their business goals and sustainability targets.

Alfa Laval's innovative technologies are dedicated to purifying, refining, and reusing materials, promoting more responsible use of natural resources. They contribute to improved energy efficiency and heat recovery, better water treatment, and reduced emissions. Thereby, Alfa Laval is not only accelerating success for its customers, but also for people and the planet. Making the world better, every day. It's all about Advancing better™.



 @Alfa Laval  @Alfa_Laval  @AlfaLavalAB

How to contact Alfa Laval

Contact details for all countries are continually updated on our web site. Please visit www.alfalaval.com to access the information.

For more information, or to book a call with an engineer, please visit: alfalaval.us

Literature Code

