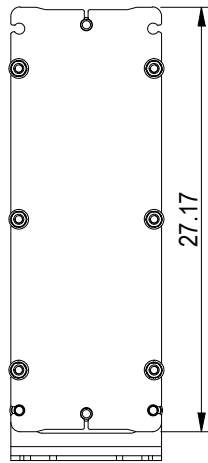
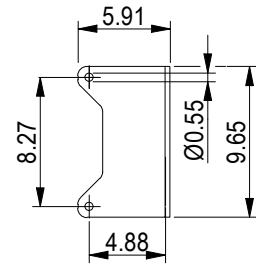
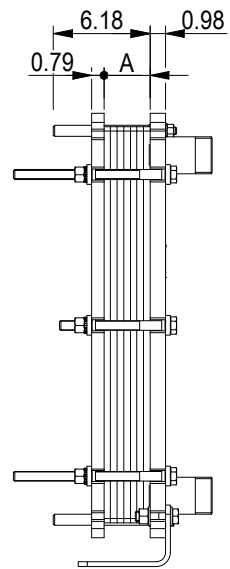


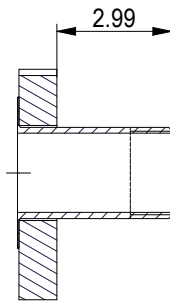
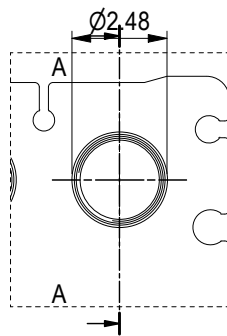
PRESSURE PLATE
(MOVABLE)



Space between pressure plate and supporting column should be kept free from fixed installations!



ASME B1.20.1 - 2-11.5 NPT, ALLOY 316L, 101 mm
S1, S2, S3, S4 A-A:

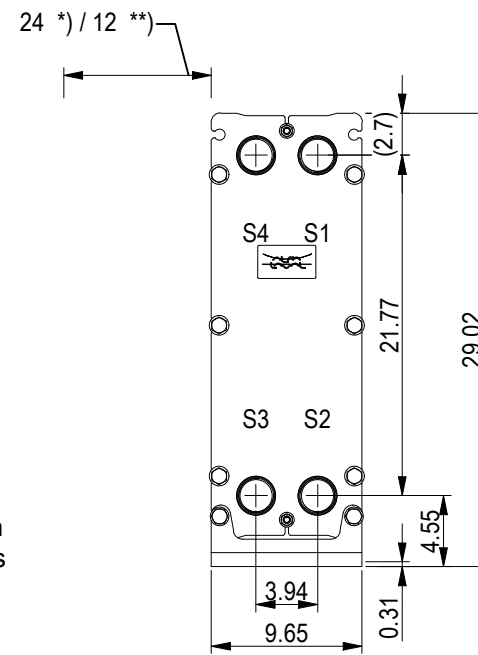


ASME B1.20.1 - 2-11.5 NPT
NO. OF UNITS

1

20.0 GPM
23.7 GPM

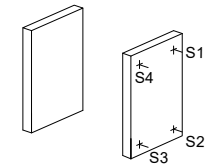
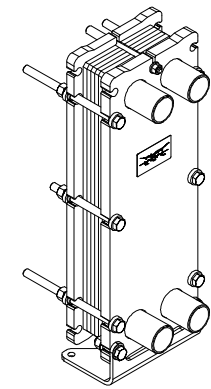
FRAME PLATE



*) Recommended free space for opening and closing to be applied on both sides

**) Free space can be reduced to this distance on one of the sides

All dimensions in inches



PRESSURE PLATE
FRAME PLATE

TIGHTENING BOLTS 4 x M16, L = 10.0 in
2 x M16, L = 10.0 in

APPROX. OUTER DIMENSIONS
LENGTH 9.4 in
WIDTH 10.2 in
HEIGHT 27.6 in
APPROX. WEIGHTS
NET WEIGHT, EMPTY 190 lb
WEIGHT FULL OF WATER 201 lb
PLATE MATERIAL ALLOY 316
PLATE THICKNESS 0.5 mm
GASKET NBRP Clip-on
AREA OF HEAT SURFACE 31.6 ft²

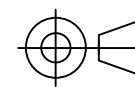


www.alfalaval.com

DRAWING
GASKETED PLATE HEAT EXCHANGER
T5-BFG

ASME
Code Section VIII Div.1

MAWP 150 psi at 266.0 °F
MDMT -18.0 °F at 150 psi
Designed, constructed and stamped in accordance with 2021 ASME.



8240171464
T5-BFG, 35 plates

Do not use this drawing for foundation bolting or piping layout
or planning of lifting and handling of the equipment.

DATE 6/12/23
REVISION 0