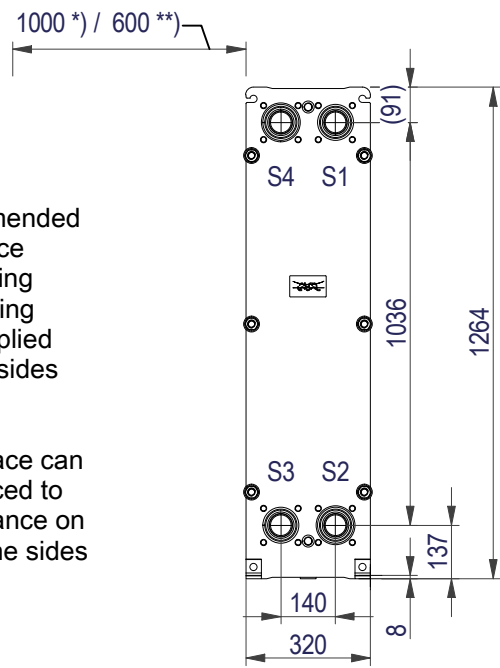


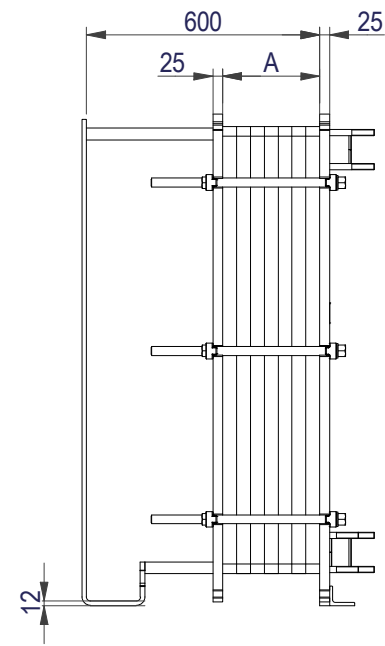
### FRAME PLATE



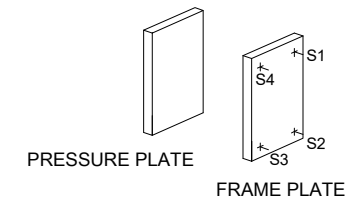
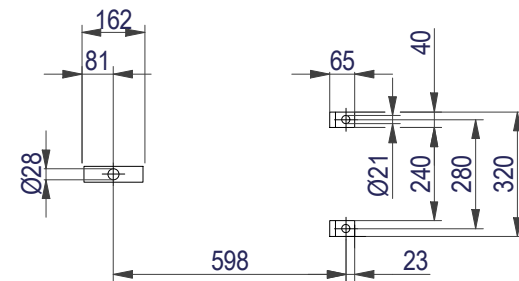
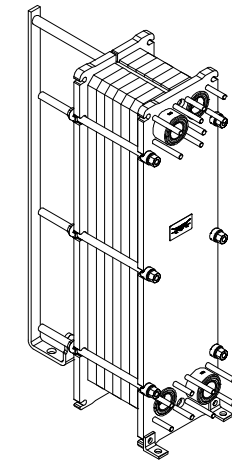
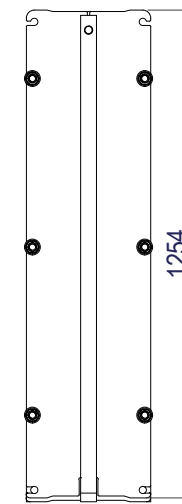
\*) Recommended free space for opening and closing to be applied on both sides

\*\*) Free space can be reduced to this distance on one of the sides

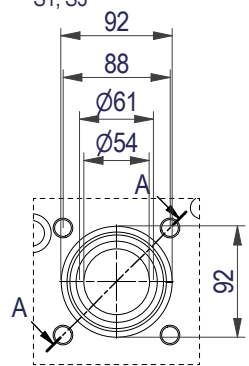
Space between pressure plate and supporting column should be kept free from fixed installations!



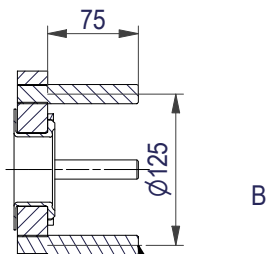
### PRESSURE PLATE (MOVABLE)



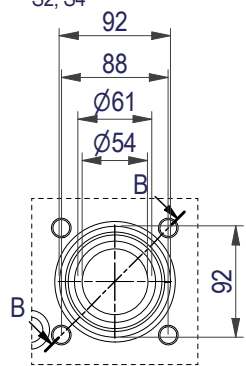
EN 1092-1 DN50 PN16  
S1, S3



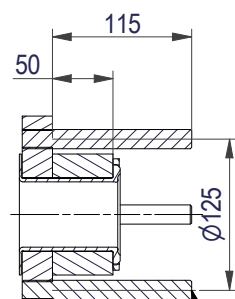
A-A:  
NBRP / ALLOY 254



EN 1092-1 DN50 PN16  
S2, S4



B-B:  
NBRP / ALLOY 254



All dimensions in millimeters (mm)

NO. OF UNITS

1

#### APPROX. OUTER DIMENSIONS

LENGTH	780 mm
WIDTH	330 mm
HEIGHT	1270 mm

#### APPROX. WEIGHTS

NET WEIGHT, EMPTY	255 kg
WEIGHT FULL OF WATER	285 kg
PLATE MATERIAL	ALLOY 316
PLATE THICKNESS	0.5 mm
GASKET	NBRP Clip-on

CHANNEL ARRANGEMENT 1\*34 L / 1\*35 L

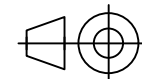


www.alfalaval.com

DRAWING  
GASKETED PLATE HEAT EXCHANGER

# TL6-BFM

PED Article 4.3



8240123156

Do not use this drawing for foundation bolting or piping layout

DATE	2/24/22
REVISION	0