



Alfa Laval LKTC Tank Leg

Tank Accessories

Introduction

The Alfa Laval LKTC Tank Leg is a fully adjustable stainless steel support for freestanding tanks or vessels. Sturdy and compact, it can stand either directly on the floor or, to ensure stability on uneven floor surfaces, on an optional steel base plate.

The LKTC Tank Leg is capable of supporting maximum static loads of up to 160,000 N within an area of 7,800 mm². Designed to stand on a base plate, the sphere-shaped tank feet are capable of supporting a maximum load of up to 19 tons.

Application

The Alfa Laval LKTC Tank Leg is designed for use on freestanding, stainless steel hygienic tanks or vessels, where adjustable supports are necessary to ensure stability. They are used across the brewery, food and beverage, personal care, biotechnology, pharmaceutical and many other industries.

Benefits

- Provides adjustable support for tanks or vessels
- Ensures stability on uneven floor surfaces
- Sturdy, compact design
- Easy to clean

Standard design

The Alfa Laval LKTC Tank Leg consists of a cylindrical stainless steel piece welded onto the tank. The cylindrical piece houses an internal thread that fits onto and engages an adjustable cylinder-shaped spindle. To adjust the tank feet to the optimal height, simply shorten or lengthen the spindle.

The Alfa Laval Tank Leg is available in three sizes ($\frac{3}{4}$ ", 1" and 1- $\frac{1}{2}$ ") with or without a baseplate. The baseplate available in five sizes ($\frac{1}{2}$ ", $\frac{3}{4}$ ", 1", 1- $\frac{1}{4}$ " and 1- $\frac{1}{2}$ "). The baseplate has a ball socket and is used where the floor is not completely horizontal to ensure stable support.



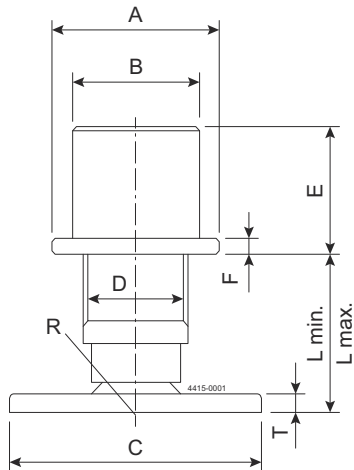
TECHNICAL DATA

Size	Max. static load (N)	Floor area of baseplate (mm ²)
¾"	75000	2600
1"	100000	5000
1½"	160000	7800

PHYSICAL DATA

Materials	
Steel parts:	Stainless steel AISI 304
Finish: Base plate:	Mat
Other parts:	Semi bright

Dimensions (inch)



Size	¾"	1"	1½"
A	1.50	2.09	3.15
B	1.40	1.57	2.57
C	2.28	3.15	3.94
D	¾"	1"	1½"
E	1.38	1.57	1.77
F	0.20	0.20	0.20
Lmin.	0.79	0.79	0.79
Lmax.	1.38	1.97	2.36
R	0.59	0.59	0.98
T	0.16	0.24	0.31
Weight	0.77	1.32	3.68
(lb)	0.95	1.83	4.96

Ordering

	Tanklegs without base plate	Tanklegs with base plate
¾"	9611-71-029-0	¾" 9611-71-022-0
1"	9611-71-030-0	1" 9611-71-023-0
1½"	9611-71-032-0	1½" 9611-71-025-0

This document and its contents are subject to copyrights and other intellectual property rights owned by Alfa Laval Corporate AB. No part of this document may be copied, re-produced or transmitted in any form or by any means, or for any purpose, without Alfa Laval Corporate AB's prior express written permission. Information and services provided in this document are made as a benefit and service to the user, and no representations or warranties are made about the accuracy or suitability of this information and these services for any purpose. All rights are reserved.

200006896-1-EN-US

© Alfa Laval Corporate AB

How to contact Alfa Laval

Up-to-date Alfa Laval contact details for all countries are always available on our website at www.alfalaval.com