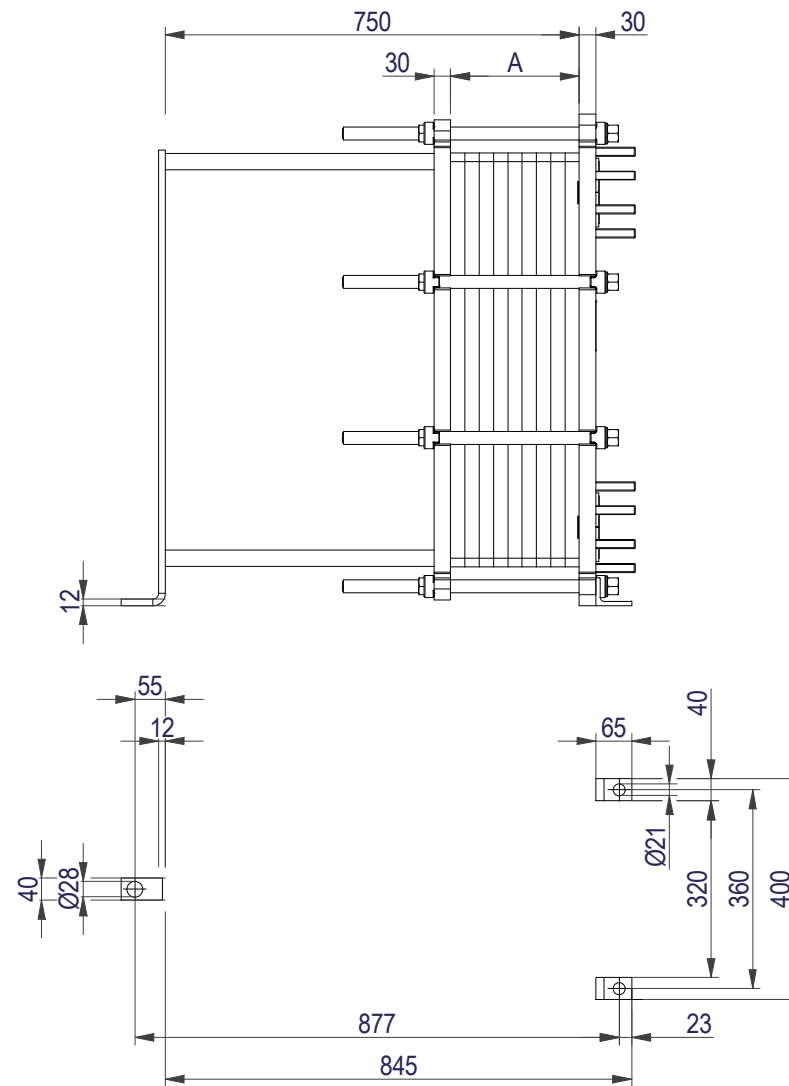
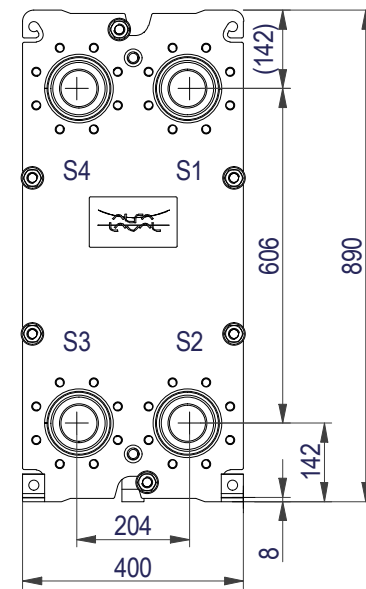


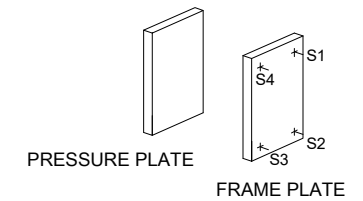
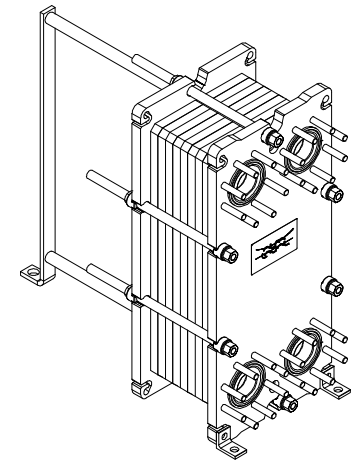
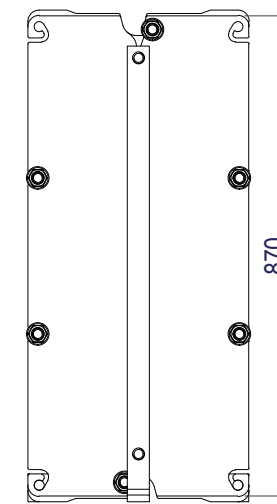
Space between pressure plate and supporting column should be kept free from fixed installations!

\*) Recommended free space for opening and closing to be applied on both sides

Free space can be reduced to this distance on one of the sides

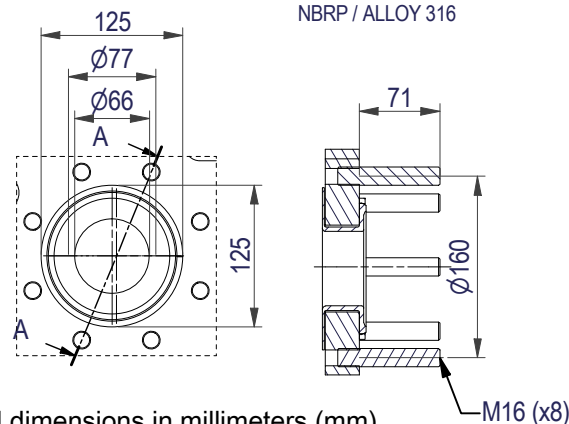


(MOVABLE)



EN 1092-1 DN80 PN10  
S1, S2, S3, S4

A-A:  
NBRP / ALLOY 316



All dimensions in millimeters (mm)

NO. OF UNITS

1



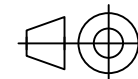
www.alfalaval.com

## DRAWING

### GASKETED PLATE HEAT EXCHANGER

# T8-BFM

PED Article 4.3



8240118034
------------

Do not use this drawing for foundation bolting or piping layout

DATE 2/15/22  
REVISION 0

APPROX. OUTER DIMENSIONS

LENGTH 870 mm

WIDTH 410 mm

HEIGHT	900 mm
--------	--------

APPROX. WEIGHTS

NET WEIGHT, EMPTY 274 kg

WEIGHT FULL OF WATER 317 kg

PLATE MATERIAL	ALLOY 316
----------------	-----------

PLATE THICKNESS 0.5 mm

GASKET NBRP ClipGrip™

CHANNEL ARRANGEMENT 1\*50 MH  
/ 1\*49 ML