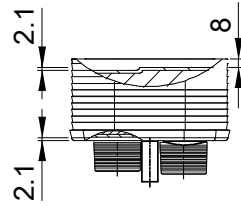
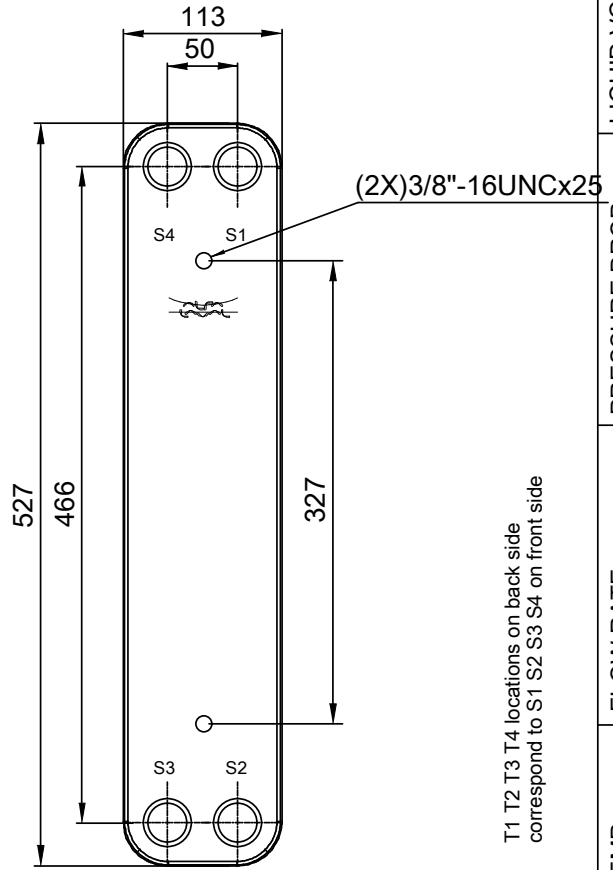
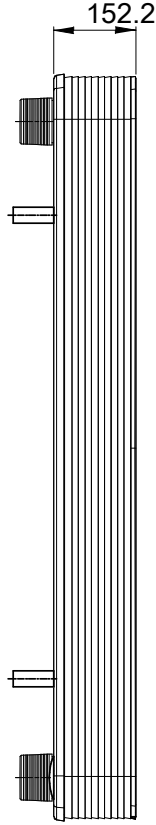
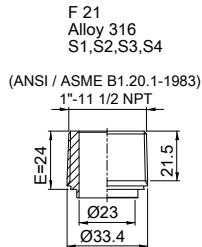


Note that all unique customer requirements (i.e tolerance) need to be verified thru Alfa Laval.



Frameplate is depressed 2.1 mm at connections S3 and S4 if holed.
 Pressureplate is depressed 2.1 mm at connections T3 and T4 if holed.

HEATING SURFACE
 NETWEIGHT 12.9 kg
 OPERATING WEIGHT kg
 PLATE MATERIAL ALLOY 316
 PLATE GROUPING 1*29H/1*30H

ALL DIMENSIONS IN MILLIMETERS

SIDE	MEDIA	INLET	TEMP.	OUTLET	TEMP.	FLOW RATE	PRESSURE DROP	LIQUID VOL.
1		S1		S2				3.09 dm ³
2		S3		S4				2.99 dm ³

PRESSURE VESSEL APPROVAL

UL/CRN



CB60-60H (3287102159)

www.alfalaval.com

CUSTOMER NAME / REF. NO.

COMPANY / REF.

TOTAL LENGTH 178.2 mm
 TOTAL WIDTH 113.0 mm
 TOTAL HEIGHT 527.0 mm

4/16/2024
 REV 0