

# Alfa Laval Tank cleaning

## Preventive maintenance guidelines

### Plan your budget and your downtime

A production stop caused by poor operation or breakdown is costly. Both due to lost product and expensive service.

The most cost-effective way to ensure product safety and production reliability, is to plan and carry out service at scheduled intervals.

Using the Alfa Laval guidelines it is easy to plan the relevant maintenance intervals. You are able to plan your operating budget and the risk of breakdowns is virtually eliminated. Financially, preventive maintenance makes sense.

### Instruction manuals and service videos



Detailed manuals are supplied with every product. Service and maintenance videos have been created to enable you to service Alfa Laval products in a correct and efficient way. Scan the QR code to access the service videos.

### Genuine spare parts and service kits

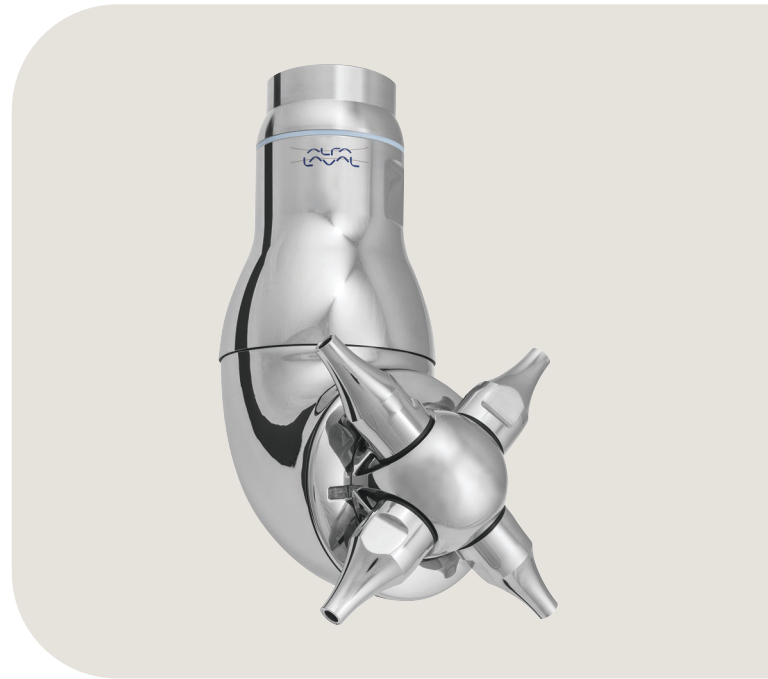


Alfa Laval Service Kits are available for scheduled maintenance. They contain all the relevant parts needed for general service. Using genuine Alfa Laval spare parts guarantees the right quality and composition of materials. They of course come with full traceability. Scan the QR code to access the spare parts catalogue.

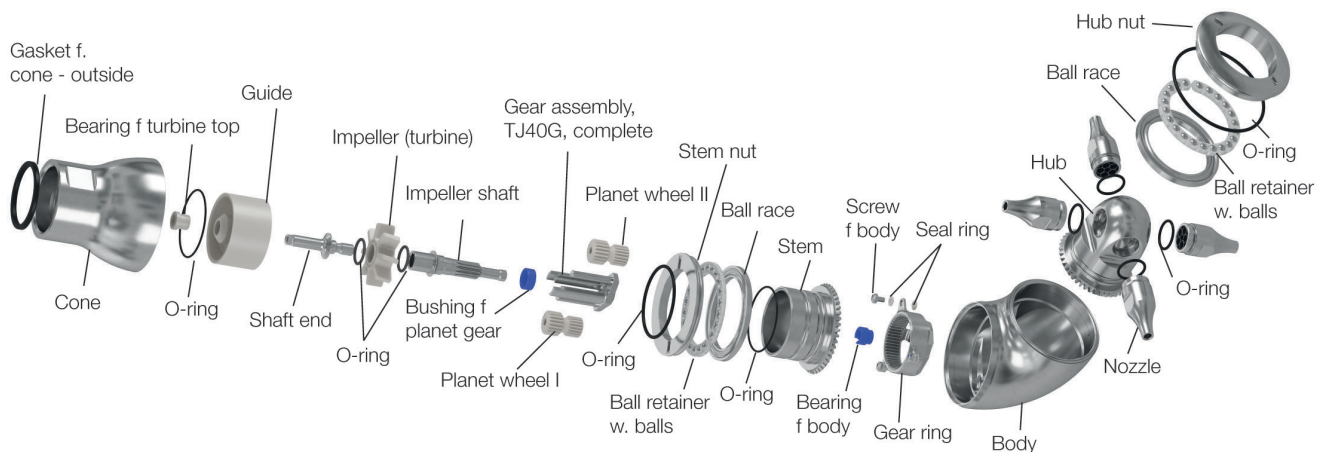
### Alfa Laval service tools

Alfa Laval has the specific tools required to service Alfa Laval hygienic equipment. These include tools for installing, operating and maintaining our hygienic equipment.

Using genuine spare parts ensures your certificates are still valid.



## Example of exploded view - TJ40G



## Inspect the tank cleaning equipment regularly

The recommended preventive maintenance program is based on tank cleaning machines working in average conditions. However, a tank cleaning machine, exposed to heavy soiling and recirculation CIP liquid containing abrasives and/or particulates (manual instructions for strainer recommendations), needs more frequent attention than one exposed to light/no soiling and recirculation with ordinary CIP liquid. This preventive maintenance guidelines cover Toftejorg rotary jet heads as below:



## Scheduled maintenance intervals for Toftejorg tank cleaning

Application	Hours	Replace service kit every x working hours or y years:					
	Type	150 hours	200 hours or yearly	300 hours or yearly	400 hours or 2nd yearly	600 hours or 3rd yearly	800 hours or 4th yearly
Pharma, Biotech, Personal care etc.	SaniJet 25						
	Inspection kit		X			X	
	Minor service kit				X		
	Major service kit						X
	SaniJet 20 Air						
	Service kit			X			
	SaniJet 20 Media						
	Service kit	X*		X			

\* If the used cleaning media is tap water or commonly used CIP solvents, the recommended maintenance interval is 300 hours. However, if special cleaning media is used such as e.g. WFI, the recommended maintenance interval is 150 hours.

Application	Hours	Replace service kit every x working hours or y years:			
	Type	250 hours	300 hours	500 hours	1000 hours
Food, Dairy & Beverage	TJ40G				
	Minor service kit			X	X
	Major service kit				X
	TZ-89		X		
	TJ20G			X	
	TZ-74** (SC,BKV)		X		
	TZ-79**		X		

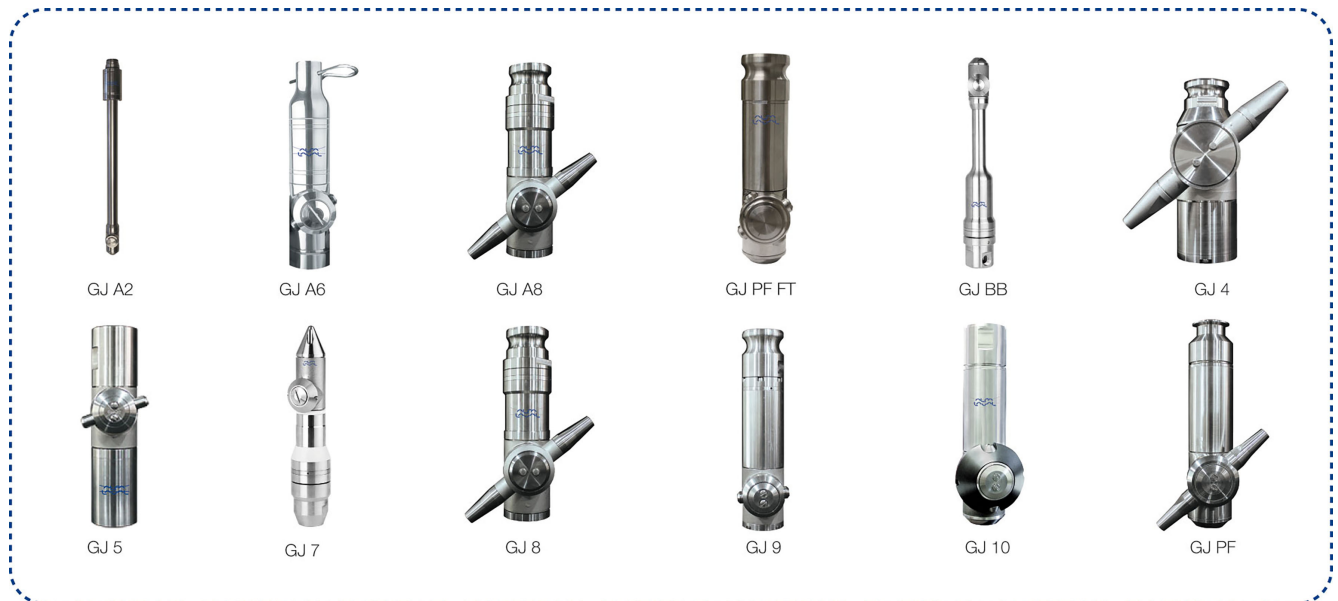
Application	Hours	Replace service kit every x working hours or y years:			
	Type	250 hours	300 hours	500 hours	1000 hours
Fine chemical & industry	MultiJet 25			X	
	MultiJet 40		X		
	MultiJet 50		X		
	MultiJet 65	X			
	TZ-66**		X		
	TZ-67**		X		
	TZ-750**	X			

\*\* Need conversion overview or replace suggestion from TZ67/66 and TZ-74/79 to TJ40G please contact Alfa Laval.

All recommended service kits are found in the manual for the specific machine

### Scheduled maintenance intervals for Gamajet tank cleaning

The Alfa Laval Gamajet should be washed out with clean water after each use to remove any foreign material or soft substances left in the machine that may harden during storage and cause the Alfa Laval Gamajet to seize or lock up. A clean water rinse through the Alfa Laval Gamajet will also wash out any residues of chemical cleaners or recirculated wash water that could adversely affect the O-rings during prolonged contact in storage.



The best position to store the machine is to stand it up with the inlet connection facing down. This preventive maintenance guidelines cover Gamajet rotary jet heads:

An interval of 100 hours is recommended initially. If all of the components are found to be in acceptable condition after the first 100 hours, the Alfa Laval Gamajet may then be inspected and routine preventive maintenance should be performed recommended hours of operation, depending on the severity of use.

All the bearings, bushings, seals and O-rings are wear parts. Ideally, they should all be replaced, as a group. If just one bearing or seal is worn or damaged, replace both it and its mate, not just the worn or damaged part. Gamajet recommended maintenance hours shown as below:

Application	Type	Replace service kit every x working hours or y years:					
		100 hours	100–200 h	300–500 h	400–600 h	500–700 h	600–800 h
Food, Dairy & Beverage	GJ A2	X			X		
	GJ A6	X		X			
	GJ A8	X		X		X	
	GJ PF FT	X					X
	GJ BB	X			X		
Fine chemical & industry	GJ 4	X				X	
	GJ 5	X		X			
	GJ 7	X	X				
	GJ 8	X		X			
	GJ 9	X		X			
	GJ 10	X				X	
	GJ PF	X				X	

All recommended service kits are found in the manual for the specific machine.

The above guidelines may not apply in all working conditions.

Please contact Alfa Laval for information relating to specific applications.

This document and its contents are subject to copyrights and other intellectual property rights owned by Alfa Laval AB (publ) or any of its affiliates (jointly "Alfa Laval"). No part of this document may be copied, re-produced or transmitted in any form or by any means, or for any purpose, without Alfa Laval's prior express written permission. Information and services provided in this document are made as a benefit and service to the user, and no representations or warranties are made about the accuracy or suitability of this information and these services for any purpose. All rights are reserved.

200008509-1-EN-GB

© Alfa Laval

---

**How to contact Alfa Laval**

Up-to-date Alfa Laval contact details for all countries are always available on our website at [www.alfalaval.com](http://www.alfalaval.com)