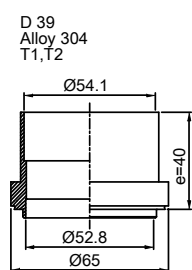
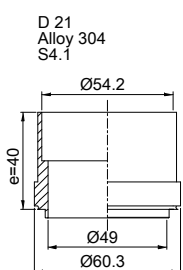
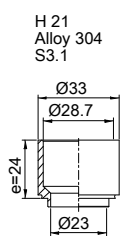
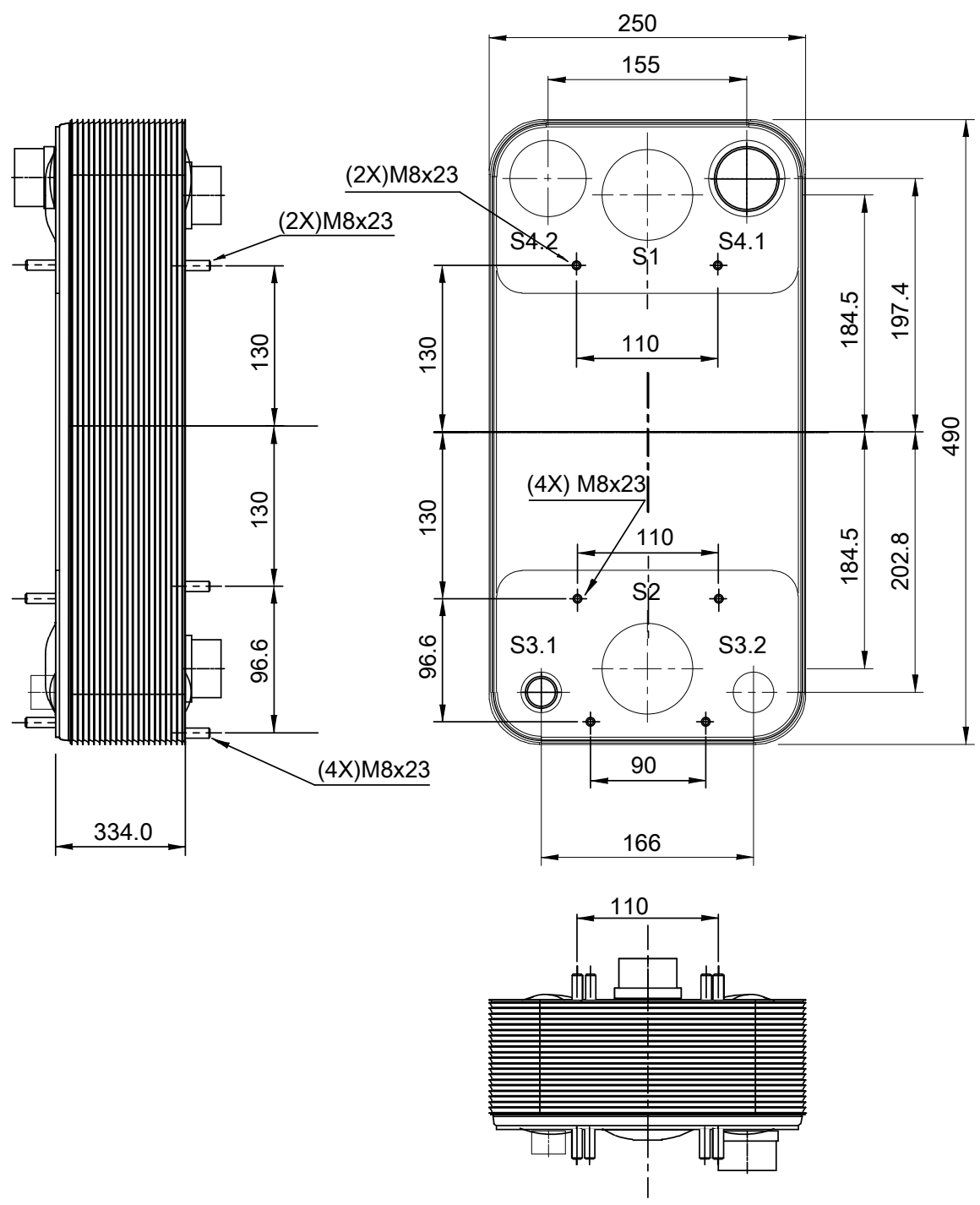


T1 T2 T3.1 T3.2 T4.1 T4.2 locations on back side correspond to S1 S2 S3.1 S3.2 S4.1 S4.2 on front side

Note that all unique customer requirements (i.e tolerance) need to be verified thru Alfa Laval.



HEATING SURFACE
 NETWEIGHT 64.6 kg
 OPERATING WEIGHT kg
 PLATE MATERIAL ALLOY 316
 PLATE GROUPING 1*74HR/1*75HB



ALL DIMENSIONS IN MILLIMETERS

| SIDE | MEDIA | INLET | TEMP. | OUTLET | TEMP. | FLOW RATE | PRESSURE DROP | LIQUID VOL. |
|------|-------|-------|-------|--------|-------|-----------|---------------|-------------|
| 1 | | T2 | | T1 | | | | 11.7 dm³ |
| 2 | | S4.1 | | S3.1 | | | | 14.8 dm³ |

PRESSURE VESSEL APPROVAL PED



ACH-230EQ-150H-F (3287075513)

www.alfalaval.com

| | | |
|--------------------------|--------------|----------|
| CUSTOMER NAME / REF. NO. | TOTAL LENGTH | 410.0 mm |
| | TOTAL WIDTH | 250.0 mm |
| | TOTAL HEIGHT | 490.0 mm |
| COMPANY / REF. | | |



1/15/2024
 REV 0