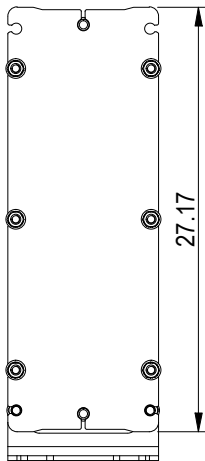


This document and its contents are subject to copyrights and other intellectual property rights owned by Alfa Laval (publ) or any of its affiliates (Alfa Laval). No part of this document may be copied, reproduced or transmitted in any form or by any means, or for any purpose, without Alfa Laval's prior express written permission. Information and services provided in this document are made as a benefit and service to the user, and no representations or warranties are made about the accuracy or suitability of this information and these services for any purpose. All rights are reserved.

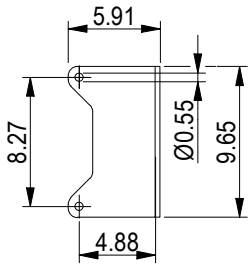
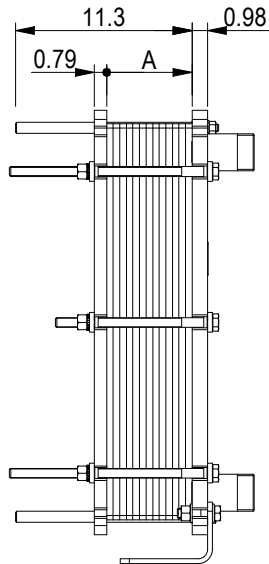
OPID 2204 es

4940062857

**PRESSURE PLATE**  
(MOVABLE)

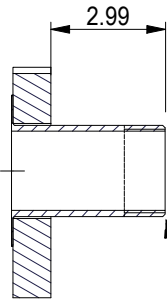
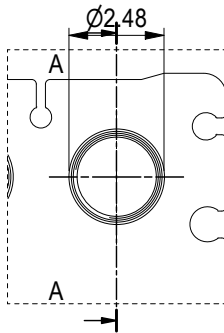


Space between pressure plate and supporting column should be kept free from fixed installations!



ASME B1.20.1 - 2-11.5 NPT, ALLOY 316L, 101 mm  
S1, S2, S3, S4

A-A:



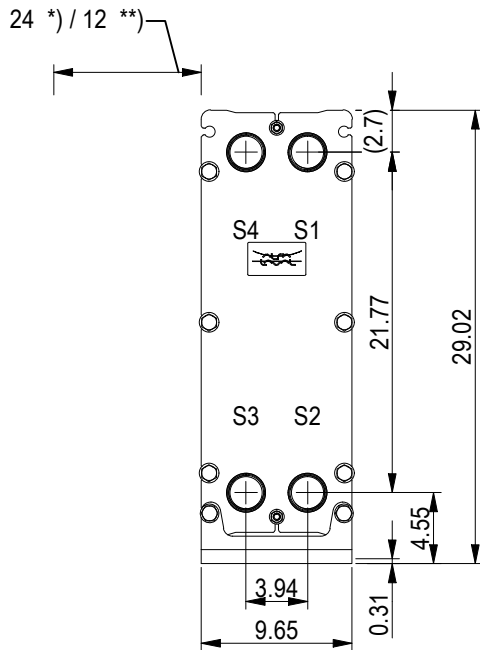
ASME B1.20.1 - 2-11.5 NPT

NO. OF UNITS

1

31.5 GPM  
37.3 GPM

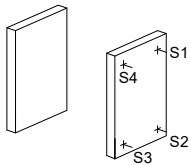
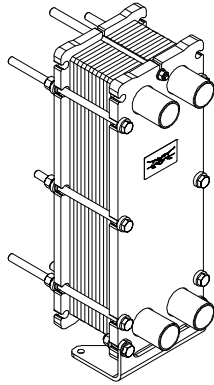
**FRAME PLATE**



\*)  
Recommended  
free space  
for opening  
and closing  
to be applied  
on both sides

\*\*)  
Free space can  
be reduced to  
this distance on  
one of the sides

All dimensions in inches



PRESSURE PLATE

FRAME PLATE

TIGHTENING BOLTS 4 x M16, L = 13.0 in  
2 x M16, L = 10.0 in

APPROX. OUTER DIMENSIONS  
LENGTH 14.6 in  
WIDTH 10.2 in  
HEIGHT 27.6 in  
APPROX. WEIGHTS  
NET WEIGHT, EMPTY 201 lb  
WEIGHT FULL OF WATER 224 lb  
PLATE MATERIAL ALLOY 316  
PLATE THICKNESS 0.5 mm  
GASKET NBRP Clip-on  
AREA OF HEAT SURFACE 34.4 ft<sup>2</sup>



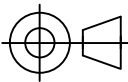
www.alfalaval.com

DRAWING  
GASKETED PLATE HEAT EXCHANGER

**T5-MFG**

ASME  
Code Section VIII Div.1

MAWP 150 psi at 266.0 °F  
MDMT -18.0 °F at 150 psi  
Designed, constructed and stamped in accordance with 2021 ASME.



8240171450  
T5-MFG, 40 plates

Do not use this drawing for foundation bolting or piping layout  
or planning of lifting and handling of the equipment.

DATE 6/12/23  
REVISION 0